

## Product datasheet for **TA324227**

### PTGES2 Rabbit Polyclonal Antibody

#### Product data:

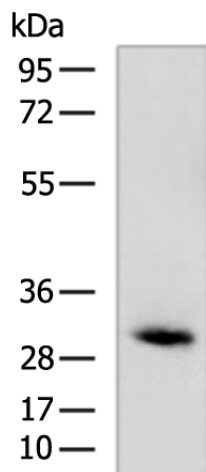
Product Type:	Primary Antibodies
Applications:	WB
Recommended Dilution:	WB: 500-2000 WB positive control: MCF7 cell lysate
Reactivity:	Human, Mouse
Host:	Rabbit
Isotype:	IgG
Clonality:	Polyclonal
Immunogen:	Fusion protein corresponding to a region derived from 90-377 amino acids of human prostaglandin E synthase 2
Formulation:	PBS pH7.3, 0.05% NaN <sub>3</sub> , 50% glycerol
Concentration:	lot specific
Purification:	Antigen affinity purification
Conjugation:	Unconjugated
Storage:	Store at -20°C as received.
Stability:	Stable for 12 months from date of receipt.
Predicted Protein Size:	42 kDa
Gene Name:	prostaglandin E synthase 2
Database Link:	<a href="#">NP_001243264</a> <a href="#">Entrez Gene 96979 Mouse</a> <a href="#">Entrez Gene 80142 Human</a> <a href="#">Q9H7Z7</a>
Background:	Prostaglandin E synthase 2 is an enzyme that in humans is encoded by the PTGES2 gene. The protein encoded by this gene is a membrane-associated prostaglandin E synthase; which catalyzes the conversion of prostaglandin H <sub>2</sub> to prostaglandin E <sub>2</sub> . This protein also has been shown to activate the transcription regulated by a gamma-interferon-activated transcription element (GATE). Multiple transcript variants have been found for this gene.?
Synonyms:	C9orf15; GBF-1; GBF1; mPGES-2; PGES2



[View online »](#)

Protein Pathways: Arachidonic acid metabolism, Metabolic pathways

**Product images:**



Gel: 8%SDS-PAGE  
Lysate: 40  $\mu$ g  
Lane: MCF7 cell lysate  
Primary antibody: TA324227 (PTGES2 Antibody)  
at dilution 1/1000  
Secondary antibody: Goat anti rabbit IgG at  
1/5000 dilution  
Exposure time: 3 minutes