

## Product datasheet for **TA324226**

### **SGLT1 (SLC5A1) Rabbit Polyclonal Antibody**

#### **Product data:**

Product Type:	Primary Antibodies
Applications:	IHC, WB
Recommended Dilution:	WB: 500-2000 WB positive control: Mouse eye tissue lysate IHC: 50-300 Positive control: Human cervical cancer Predicted cell location: Cell membrane
Reactivity:	Human, Mouse, Rat
Host:	Rabbit
Isotype:	IgG
Clonality:	Polyclonal
Immunogen:	Synthetic peptide corresponding to a region derived from 402-422 amino acids of human solute carrier family 5 (sodium/glucose cotransporter), member 1
Formulation:	PBS pH7.3, 0.05% NaN <sub>3</sub> , 50% glycerol
Concentration:	lot specific
Purification:	Antigen affinity purification
Conjugation:	Unconjugated
Storage:	Store at -20°C as received.
Stability:	Stable for 12 months from date of receipt.
Predicted Protein Size:	60 kDa
Gene Name:	solute carrier family 5 member 1
Database Link:	<a href="#">NP_001243243</a> <a href="#">Entrez Gene 20537 Mouse</a> <a href="#">Entrez Gene 25552 Rat</a> <a href="#">Entrez Gene 6523 Human</a> <a href="#">P13866</a>



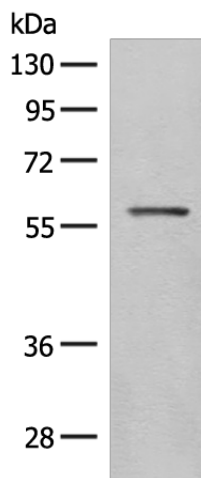
[View online »](#)

**Background:** This gene encodes a member of the sodium-dependent glucose transporter (SGLT) family. The encoded integral membrane protein is the primary mediator of dietary glucose and galactose uptake from the intestinal lumen. Mutations in this gene have been associated with glucose-galactose malabsorption. Multiple transcript variants encoding different isoforms have been found for this gene.

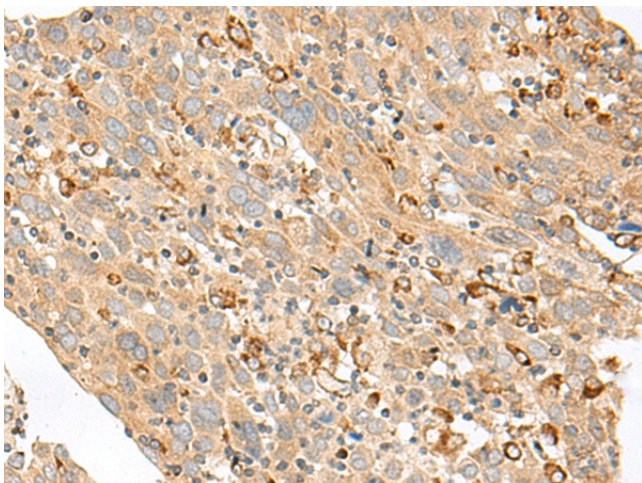
**Synonyms:** D22S675; NAGT; SGLT1

**Protein Families:** Druggable Genome, Transmembrane

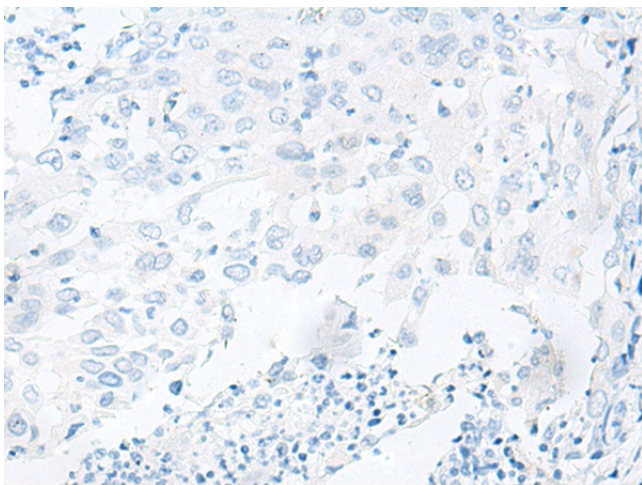
**Product images:**



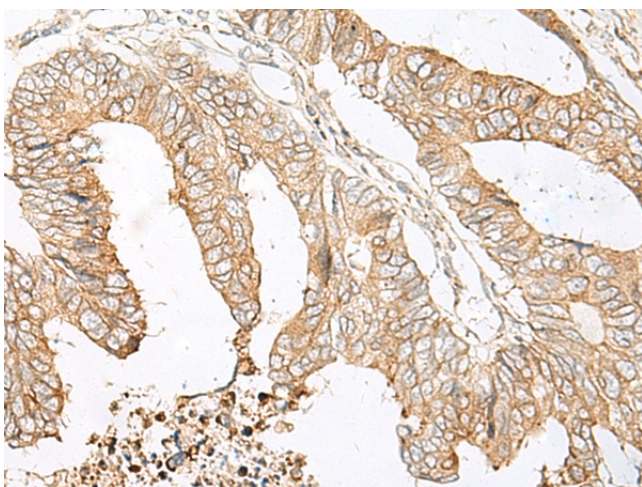
Gel: 8%SDS-PAGE  
Lysate: 40  $\mu$ g  
Lane: Mouse eye tissue lysate  
Primary antibody: TA324226 (SLC5A1 Antibody) at dilution 1/500  
Secondary antibody: Goat anti rabbit IgG at 1/8000 dilution  
Exposure time: 30 seconds



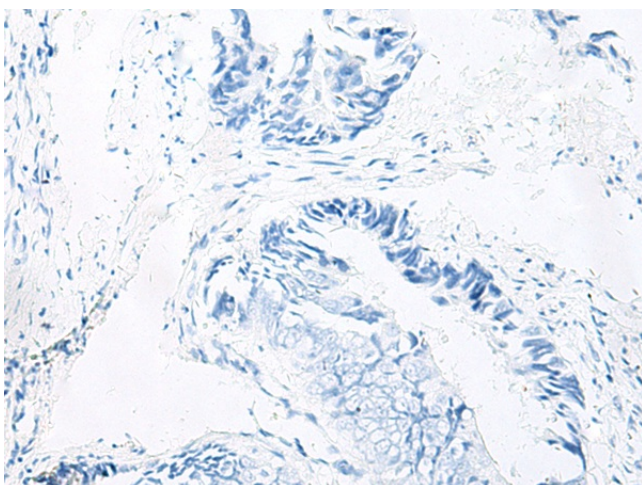
Immunohistochemistry of paraffin-embedded Human cervical cancer tissue using TA324226 (SLC5A1 Antibody) at dilution 1/80 (Original magnification:  $\times$ 200)



Immunohistochemistry of paraffin-embedded Human cervical cancer tissue using TA324226 (SLC5A1 Antibody) at dilution 1/80, treated with synthetic peptide. (Original magnification: ×200)



Immunohistochemistry of paraffin-embedded Human colorectal cancer tissue using TA324226 (SLC5A1 Antibody) at dilution 1/80 (Original magnification: ×200)



Immunohistochemistry of paraffin-embedded Human colorectal cancer tissue using TA324226 (SLC5A1 Antibody) at dilution 1/80, treated with synthetic peptide. (Original magnification: ×200)