

Product datasheet for **TA324224S**

Actin Regulatory Protein CAPG (CAPG) Rabbit Polyclonal Antibody

Product data:

Product Type:	Primary Antibodies
Applications:	IHC, WB
Recommended Dilution:	WB: 500-2000 WB positive control: Mouse lung and human fetal lung tissue, hela cells IHC: 50-200 Positive control: Human breast cancer Predicted cell location: Cytoplasm
Reactivity:	Human, Mouse, Rat
Host:	Rabbit
Isotype:	IgG
Clonality:	Polyclonal
Immunogen:	Fusion protein corresponding to C terminal 250 amino acids of human capping protein (actin filament), gelsolin-like
Formulation:	PBS pH7.3, 0.05% NaN ₃ , 50% glycerol
Purification:	Antigen affinity purification
Conjugation:	Unconjugated
Storage:	Store at -20°C as received.
Stability:	Stable for 12 months from date of receipt.
Predicted Protein Size:	38 kDa
Gene Name:	capping actin protein, gelsolin like
Database Link:	NP_001243068 Entrez Gene 12332 Mouse Entrez Gene 297339 Rat Entrez Gene 822 Human P40121



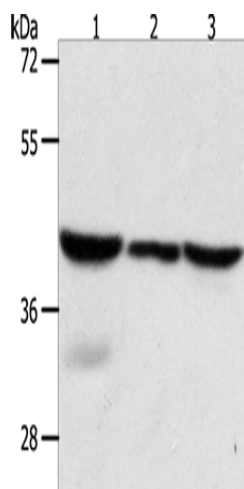
[View online »](#)

Background:

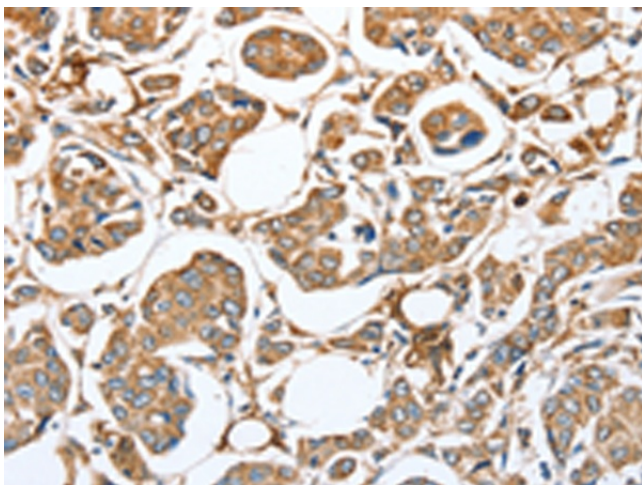
This gene encodes a member of the gelsolin/villin family of actin-regulatory proteins. The encoded protein reversibly blocks the barbed ends of F-actin filaments in a Ca²⁺ and phosphoinositide-regulated manner, but does not sever preformed actin filaments. By capping the barbed ends of actin filaments, the encoded protein contributes to the control of actin-based motility in non-muscle cells. Alternatively spliced transcript variants have been observed for this gene.

Synonyms:

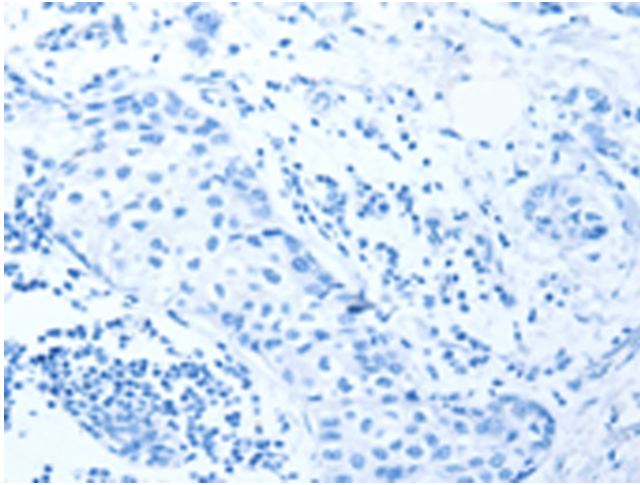
AFCP; HEL-S-66; MCP

Product images:

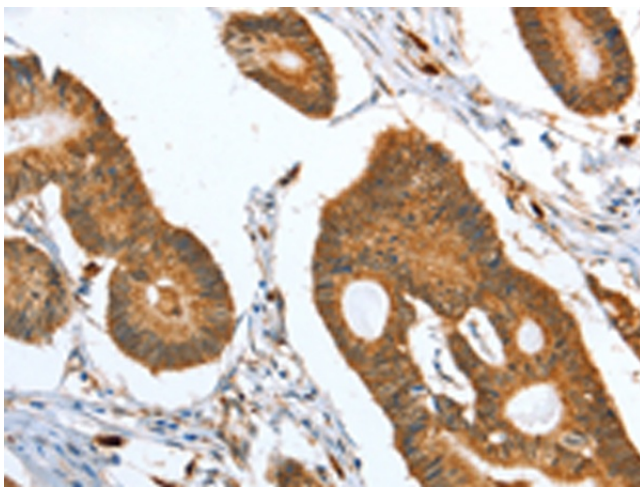
Gel: 10%SDS-PAGE
Lysate: 40 µg
Lane 1-3: Mouse lung tissue
human fetal lung tissue
hela cells
Primary antibody: [TA324224] (CAPG Antibody) at dilution 1/700
Secondary antibody: Goat anti rabbit IgG at 1/8000 dilution
Exposure time: 5 seconds



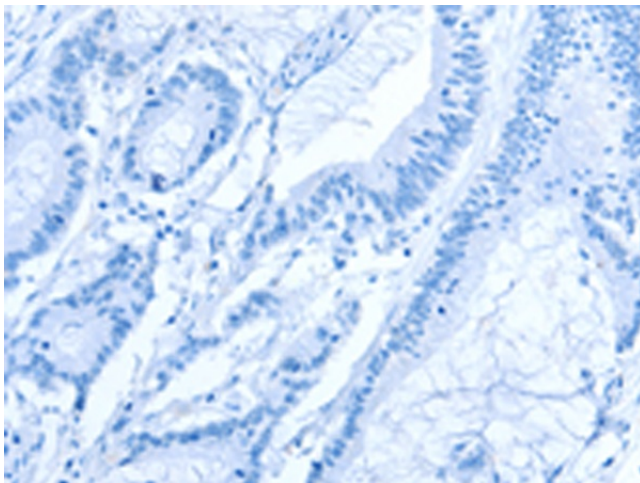
Immunohistochemistry of paraffin-embedded Human breast cancer tissue using [TA324224] (CAPG Antibody) at dilution 1/35 (Original magnification: ×200)



Immunohistochemistry of paraffin-embedded Human breast cancer tissue using [TA324224] (CAPG Antibody) at dilution 1/35, treated with fusion protein. (Original magnification: $\times 200$)



Immunohistochemistry of paraffin-embedded Human colon cancer tissue using [TA324224] (CAPG Antibody) at dilution 1/35 (Original magnification: $\times 200$)



Immunohistochemistry of paraffin-embedded Human colon cancer tissue using [TA324224] (CAPG Antibody) at dilution 1/35, treated with fusion protein. (Original magnification: $\times 200$)