

## Product datasheet for **TA324223S**

### Actin Regulatory Protein CAPG (CAPG) Rabbit Polyclonal Antibody

#### Product data:

Product Type:	Primary Antibodies
Applications:	IHC, WB
Recommended Dilution:	WB: 1000-5000 WB positive control: Jurkat and RAW264.7 cells IHC: 50-200 Positive control: Human brain Predicted cell location: Cytoplasm or Nucleus
Reactivity:	Human, Mouse, Rat
Host:	Rabbit
Isotype:	IgG
Clonality:	Polyclonal
Immunogen:	Fusion protein corresponding to C terminal 250 amino acids of human capping protein (actin filament), gelsolin-like
Formulation:	PBS pH7.3, 0.05% NaN <sub>3</sub> , 50% glycerol
Purification:	Antigen affinity purification
Conjugation:	Unconjugated
Storage:	Store at -20°C as received.
Stability:	Stable for 12 months from date of receipt.
Predicted Protein Size:	38 kDa
Gene Name:	capping actin protein, gelsolin like
Database Link:	<a href="#">NP_001243068</a> <a href="#">Entrez Gene 12332 Mouse</a> <a href="#">Entrez Gene 297339 Rat</a> <a href="#">Entrez Gene 822 Human</a> <a href="#">P40121</a>



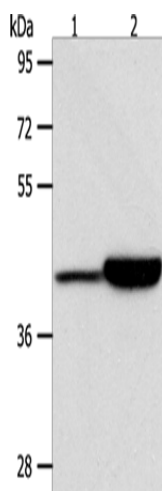
[View online »](#)

**Background:**

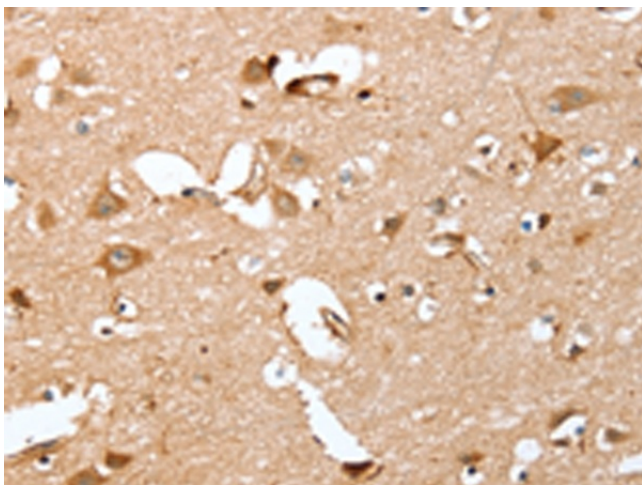
This gene encodes a member of the gelsolin/villin family of actin-regulatory proteins. The encoded protein reversibly blocks the barbed ends of F-actin filaments in a Ca<sup>2+</sup> and phosphoinositide-regulated manner, but does not sever preformed actin filaments. By capping the barbed ends of actin filaments, the encoded protein contributes to the control of actin-based motility in non-muscle cells. Alternatively spliced transcript variants have been observed for this gene.

**Synonyms:**

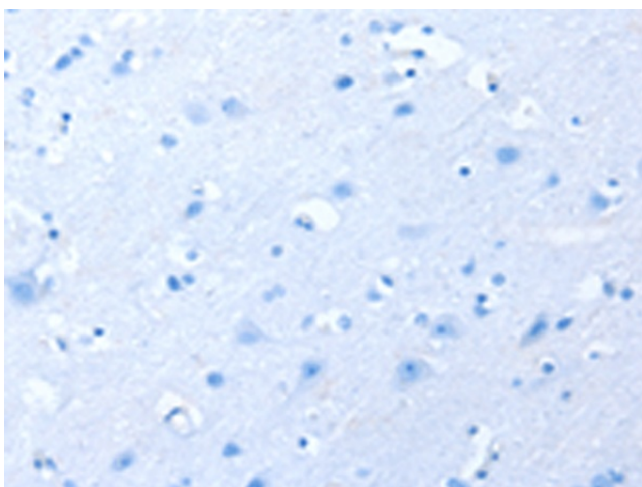
AFCP; HEL-S-66; MCP

**Product images:**

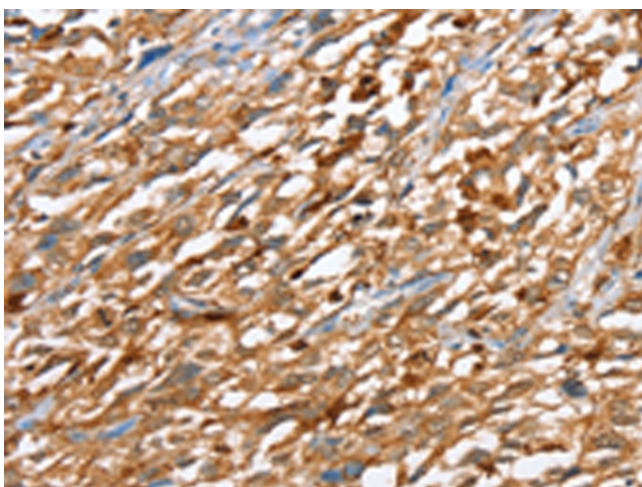
Gel: 10%SDS-PAGE  
Lysate: 40 µg  
Lane 1-2: Jurkat cells  
RAW264.7 cells  
Primary antibody: [TA324223] (CAPG Antibody) at dilution 1/950  
Secondary antibody: Goat anti rabbit IgG at 1/8000 dilution  
Exposure time: 20 seconds



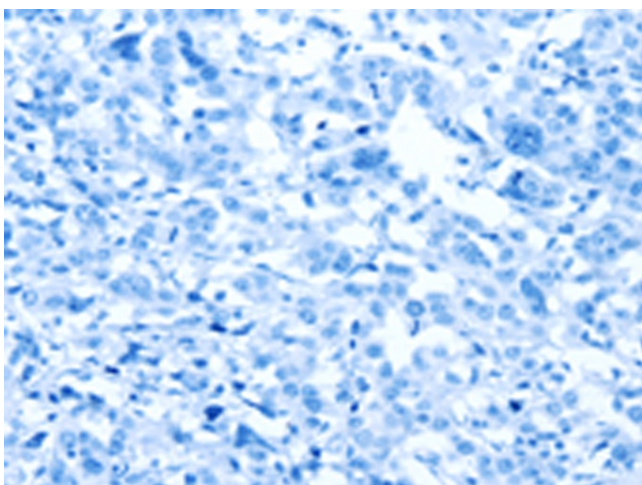
Immunohistochemistry of paraffin-embedded Human brain tissue using [TA324223] (CAPG Antibody) at dilution 1/40 (Original magnification: ×200)



Immunohistochemistry of paraffin-embedded Human brain tissue using [TA324223] (CAPG Antibody) at dilution 1/40, treated with fusion protein. (Original magnification:  $\times 200$ )



Immunohistochemistry of paraffin-embedded Human esophagus cancer tissue using [TA324223] (CAPG Antibody) at dilution 1/40 (Original magnification:  $\times 200$ )



Immunohistochemistry of paraffin-embedded Human esophagus cancer tissue using [TA324223] (CAPG Antibody) at dilution 1/40, treated with fusion protein. (Original magnification:  $\times 200$ )