

Product datasheet for **TA324222**

WNT5A Rabbit Polyclonal Antibody

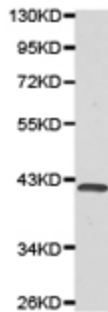
Product data:

Product Type:	Primary Antibodies
Applications:	WB
Recommended Dilution:	WB: 1:500-2000
Reactivity:	Human, Mouse, Rat
Host:	Rabbit
Isotype:	IgG
Clonality:	Polyclonal
Immunogen:	Fusion protein corresponding to C terminal 280 amino acids of human wingless-type MMTV integration site family, member 5A
Formulation:	PBS pH7.3, 0.05% NaN ₃ , 50% glycerol
Concentration:	lot specific
Purification:	Antigen affinity purification
Conjugation:	Unconjugated
Storage:	Store at -20°C as received.
Stability:	Stable for 12 months from date of receipt.
Predicted Protein Size:	42 kDa
Gene Name:	Wnt family member 5A
Database Link:	NP_001243034 Entrez Gene 22418 Mouse Entrez Gene 64566 Rat Entrez Gene 7474 Human P41221



[View online »](#)

Background:	The Wnt family includes several secreted glycoproteins that play important roles in animal development. There are 19 Wnt genes in the human genome that encode functionally distinct Wnt proteins. Wnt members bind to the Frizzled family of seven-pass transmembrane proteins and activate several signaling pathways. The canonical Wnt/ β -catenin pathway also requires a coreceptor from the low-density lipoprotein receptor family. Aberrant activation of Wnt signaling pathways is involved in several types of cancers. Wnt-5a has been shown to signal through the canonical Wnt pathways as well as through non-canonical pathways and is up-regulated in various types of human cancers. In melanoma, Wnt5a is thought to directly affect cell motility and metastasis.
Synonyms:	hWNT5A
Protein Families:	Adult stem cells, Cancer stem cells, Druggable Genome, ES Cell Differentiation/IPS, Secreted Protein, Stem cell relevant signaling - Wnt Signaling pathway
Protein Pathways:	Basal cell carcinoma, Hedgehog signaling pathway, Melanogenesis, Pathways in cancer, Wnt signaling pathway

Product images:

Predicted band size: 42 kDa. Positive control: Mouse heart tissue lysate. Recommended dilution: 1/500-2000. (Gel: 10%SDS-PAGE Lysate: 40 ug Primary antibody: 1/500 dilution Secondary antibody: Goat anti Rabbit IgG - H&L (HRP) at 1/10000 dilution Exposure time: 1 minute)