

Product datasheet for **TA324218**

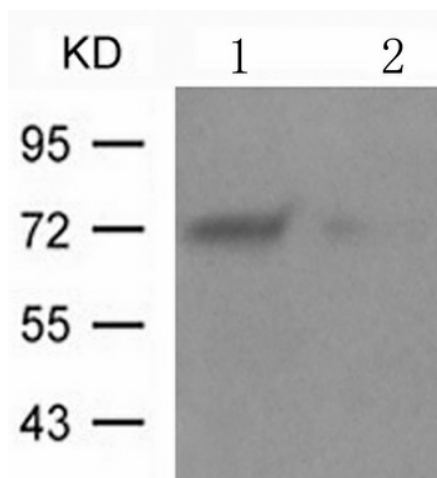
ATF2 Rabbit Polyclonal Antibody

Product data:

Product Type:	Primary Antibodies
Applications:	IHC, WB
Recommended Dilution:	WB: 1:500-1000, IHC: 1:50-100
Reactivity:	Human, Mouse, Rat
Modifications:	Phospho-specific
Host:	Rabbit
Isotype:	IgG
Clonality:	Polyclonal
Immunogen:	Peptide sequence around phosphorylation site of serine 62 or 44 (N-D-S(p)-V-I) derived from Human ATF2.
Formulation:	PBS pH7.3, 0.05% NaN ₃ , 50% glycerol
Concentration:	lot specific
Purification:	Antigen affinity purification
Conjugation:	Unconjugated
Storage:	Store at -20°C as received.
Stability:	Stable for 12 months from date of receipt.
Gene Name:	activating transcription factor 2
Database Link:	NP_001871 Entrez Gene 11909 MouseEntrez Gene 81647 RatEntrez Gene 1386 Human P15336
Background:	Transcriptional activator, probably constitutive, which binds to the cAMP-responsive element (CRE) (consensus: 5'-GTGACGT[AC][AG]-3'), a sequence present in many viral and cellular promoters. Interaction with JUN redirects JUN to bind to CRES preferentially over the 12-O-tetradecanoylphorbol-13-acetate response elements (TRES) as part of an ATF2-c-Jun complex.
Synonyms:	CRE-BP1; CREB-2; CREB2; HB16; TREB7
Protein Families:	Druggable Genome, Transcription Factors
Protein Pathways:	MAPK signaling pathway

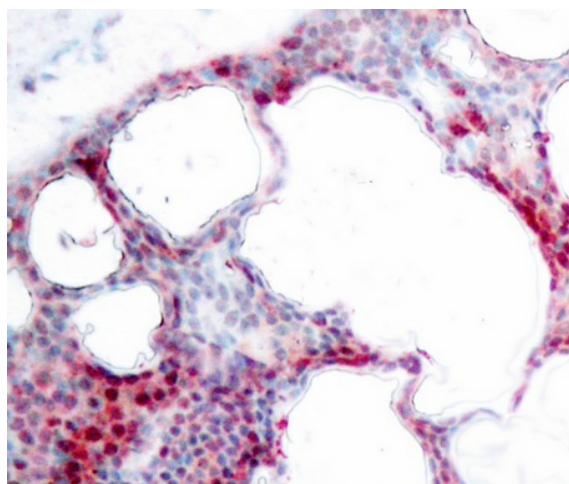


[View online »](#)

Product images:

Predicted band size: 65-75 kDa. Positive control: MDA231 cells treated with UV lysate.

Recommended dilution: 1/ 500-1000. (Gel: 8%SDS-PAGE Lane 1: MDA231 cells treated with UV lysate Lane 2: MDA231 cells untreated with UV lysate Lysates: 30 ug per lane Primary antibody: 1/500 dilution Secondary antibody: Goat anti Rabbit IgG - H&L (HRP) at 1/10000 dilution Exposure time: 1 minute)



Predicted cell location: Nucleus. Positive control: Human breast carcinoma tissue. Recommended dilution: 1/ 50-100 The image is immunohistochemistry of paraffin-embedded human breast carcinoma tissue using ATF2 (Phospho-Ser62 or 44) antibody at dilution 1/50. (Original magnification:× 200)