

## Product datasheet for **TA324216S**

### ATF2 Rabbit Polyclonal Antibody

#### Product data:

Product Type:	Primary Antibodies
Applications:	IHC
Recommended Dilution:	IHC: 25-100 Positive control: Human lymphoma Predicted cell location: Nucleus
Reactivity:	Human, Mouse, Rat
Host:	Rabbit
Isotype:	IgG
Clonality:	Polyclonal
Immunogen:	Fusion protein corresponding to C terminal 300 amino acids of human activating transcription factor 2
Formulation:	PBS pH7.3, 0.05% NaN <sub>3</sub> , 50% glycerol
Purification:	Antigen affinity purification
Conjugation:	Unconjugated
Storage:	Store at -20°C as received.
Stability:	Stable for 12 months from date of receipt.
Gene Name:	activating transcription factor 2
Database Link:	<a href="#">NP_001871</a> <a href="#">Entrez Gene 11909 Mouse</a> <a href="#">Entrez Gene 81647 Rat</a> <a href="#">Entrez Gene 1386 Human</a> <a href="#">P15336</a>
Background:	This gene encodes a transcription factor that is a member of the leucine zipper family of DNA binding proteins. This protein binds to the cAMP-responsive element (CRE), an octameric palindrome. It forms a homodimer or a heterodimer with c-Jun and stimulates CRE-dependent transcription. This protein is also a histone acetyltransferase (HAT) that specifically acetylates histones H2B and H4 in vitro; thus it may represent a class of sequence-specific factors that activate transcription by direct effects on chromatin components. Several alternatively spliced transcript variants have been found for this gene.?
Synonyms:	CRE-BP1; CREB-2; CREB2; HB16; TREB7

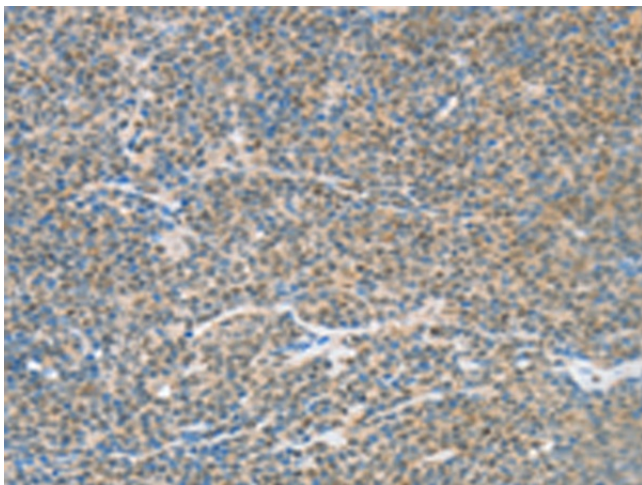


[View online »](#)

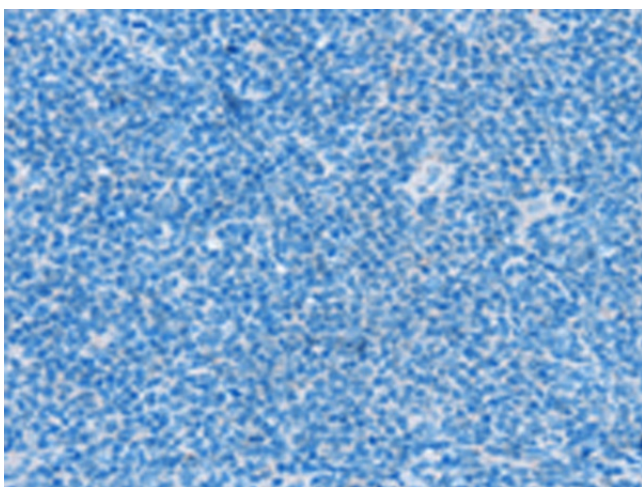
Protein Families: Druggable Genome, Transcription Factors

Protein Pathways: MAPK signaling pathway

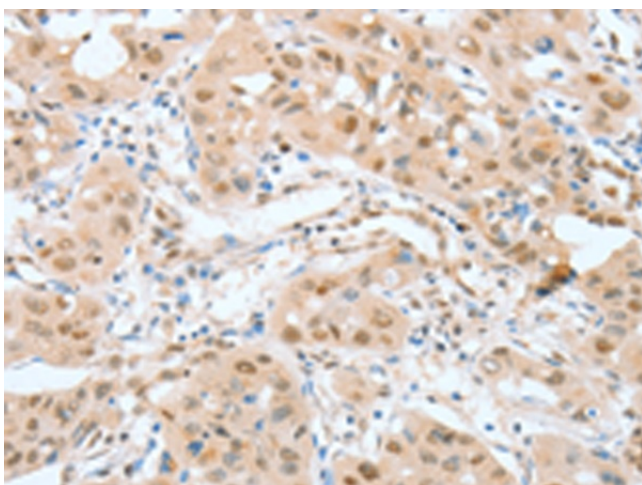
**Product images:**



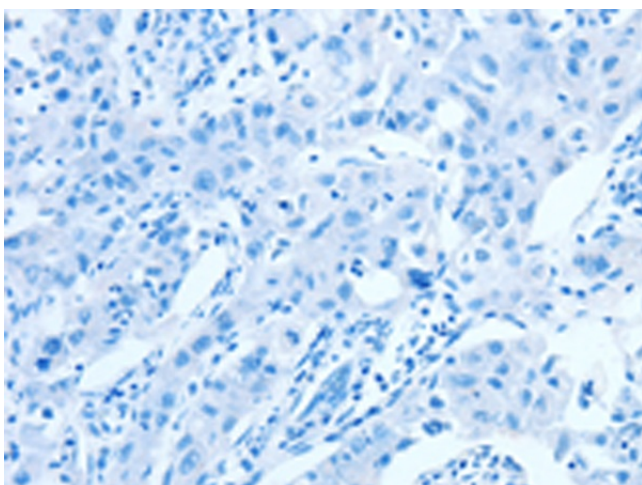
Immunohistochemistry of paraffin-embedded Human lymphoma tissue using [TA324216] (ATF2 Antibody) at dilution 1/15 (Original magnification: ×200)



Immunohistochemistry of paraffin-embedded Human lymphoma tissue using [TA324216] (ATF2 Antibody) at dilution 1/15, treated with fusion protein. (Original magnification: ×200)



Immunohistochemistry of paraffin-embedded Human lung cancer tissue using [TA324216] (ATF2 Antibody) at dilution 1/15 (Original magnification:  $\times 200$ )



Immunohistochemistry of paraffin-embedded Human lung cancer tissue using [TA324216] (ATF2 Antibody) at dilution 1/15, treated with fusion protein. (Original magnification:  $\times 200$ )