

Product datasheet for **TA324210S**

CEBP gamma (CEBPG) Rabbit Polyclonal Antibody

Product data:

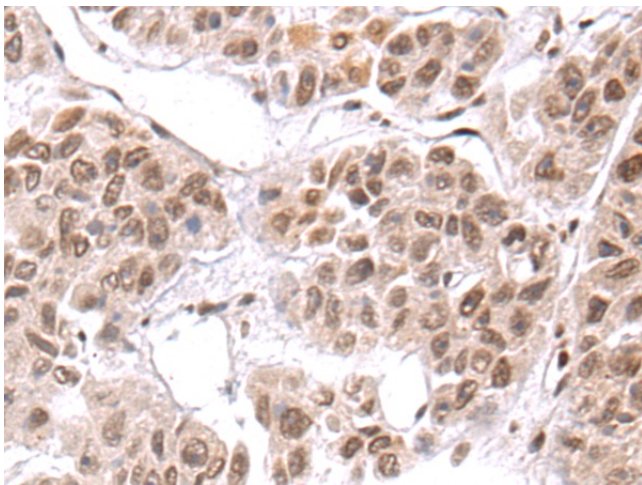
Product Type:	Primary Antibodies
Applications:	IHC
Recommended Dilution:	IHC: 50-200 Positive control: Human liver cancer Predicted cell location: Nucleus
Reactivity:	Human, Mouse, Rat
Host:	Rabbit
Isotype:	IgG
Clonality:	Polyclonal
Immunogen:	Full length fusion protein
Formulation:	PBS pH7.3, 0.05% NaN ₃ , 50% glycerol
Purification:	Antigen affinity purification
Conjugation:	Unconjugated
Storage:	Store at -20°C as received.
Stability:	Stable for 12 months from date of receipt.
Gene Name:	CCAAT/enhancer binding protein gamma
Database Link:	NP_001797 Entrez Gene 12611 Mouse Entrez Gene 25301 Rat Entrez Gene 1054 Human P53567
Background:	The C/EBP family of transcription factors regulates viral and cellular CCAAT/enhancer element-mediated transcription. C/EBP proteins contain the bZIP region; which is characterized by two motifs in the C-terminal half of the protein: a basic region involved in DNA binding and a leucine zipper motif involved in dimerization. The C/EBP family consist of several related proteins; C/EBP alpha; C/EBP beta; C/EBP gamma; and C/EBP delta; that form homodimers and that form heterodimers with each other. CCAAT/enhancer binding protein gamma may cooperate with Fos to bind PRE-I enhancer elements. Two transcript variants encoding the same protein have been found for this gene.
Synonyms:	EBP-1; GPE1BP; IG



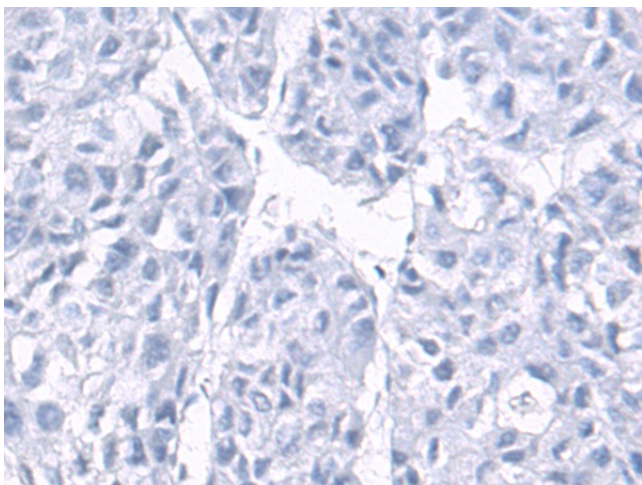
[View online »](#)

Protein Families: Druggable Genome, Transcription Factors

Product images:



Immunohistochemistry of paraffin-embedded Human liver cancer tissue using [TA324210] (CEBPG Antibody) at dilution 1/75 (Original magnification: x200)



Immunohistochemistry of paraffin-embedded Human liver cancer tissue using [TA324210] (CEBPG Antibody) at dilution 1/75, treated with fusion protein. (Original magnification: x200)