

Product datasheet for **TA324210**

CEBP gamma (CEBPG) Rabbit Polyclonal Antibody

Product data:

| | |
|-----------------------|---|
| Product Type: | Primary Antibodies |
| Applications: | IHC |
| Recommended Dilution: | IHC: 50-200 Positive control: Human liver cancer Predicted cell location: Nucleus |
| Reactivity: | Human, Mouse, Rat |
| Host: | Rabbit |
| Isotype: | IgG |
| Clonality: | Polyclonal |
| Immunogen: | Full length fusion protein |
| Formulation: | PBS pH7.3, 0.05% NaN ₃ , 50% glycerol |
| Concentration: | lot specific |
| Purification: | Antigen affinity purification |
| Conjugation: | Unconjugated |
| Storage: | Store at -20°C as received. |
| Stability: | Stable for 12 months from date of receipt. |
| Gene Name: | CCAAT/enhancer binding protein gamma |
| Database Link: | NP_001797 Entrez Gene 12611 Mouse Entrez Gene 25301 Rat Entrez Gene 1054 Human P53567 |

Background: The C/EBP family of transcription factors regulates viral and cellular CCAAT/enhancer element-mediated transcription. C/EBP proteins contain the bZIP region; which is characterized by two motifs in the C-terminal half of the protein: a basic region involved in DNA binding and a leucine zipper motif involved in dimerization. The C/EBP family consist of several related proteins; C/EBP alpha; C/EBP beta; C/EBP gamma; and C/EBP delta; that form homodimers and that form heterodimers with each other. CCAAT/enhancer binding protein gamma may cooperate with Fos to bind PRE-I enhancer elements. Two transcript variants encoding the same protein have been found for this gene.

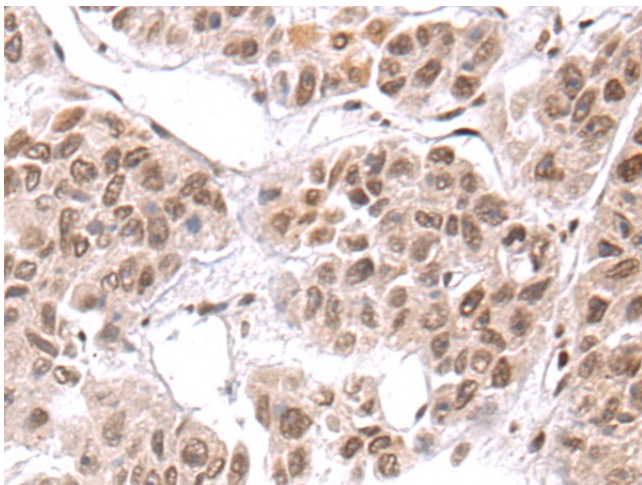


[View online »](#)

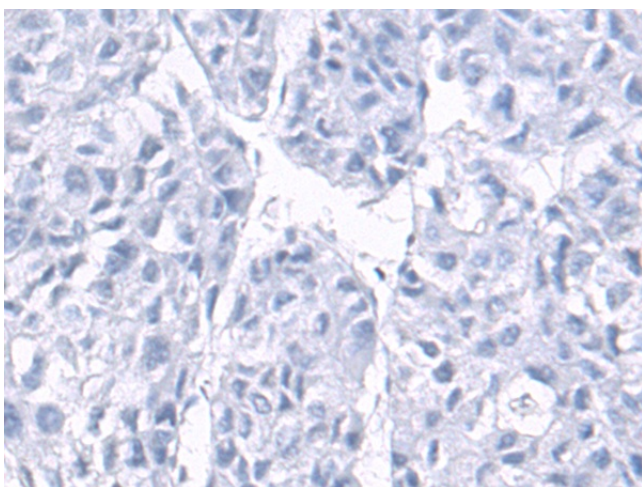
Synonyms: EBP-1; GPE1BP; IG

Protein Families: Druggable Genome, Transcription Factors

Product images:



Immunohistochemistry of paraffin-embedded Human liver cancer tissue using TA324210 (CEBPG Antibody) at dilution 1/75 (Original magnification: x200)



Immunohistochemistry of paraffin-embedded Human liver cancer tissue using TA324210 (CEBPG Antibody) at dilution 1/75, treated with fusion protein. (Original magnification: x200)