

Product datasheet for **TA324209**

SPDEF Rabbit Polyclonal Antibody

Product data:

Product Type:	Primary Antibodies
Applications:	IHC
Recommended Dilution:	IHC: 50-100 Positive control: Human colorectal cancer Predicted cell location: Nucleus
Reactivity:	Human, Mouse
Host:	Rabbit
Isotype:	IgG
Clonality:	Polyclonal
Immunogen:	Fusion protein corresponding to a region derived from 129-332 amino acids of human SAM pointed domain containing ets transcription factor
Formulation:	PBS pH7.3, 0.05% NaN ₃ , 50% glycerol
Concentration:	lot specific
Purification:	Antigen affinity purification
Conjugation:	Unconjugated
Storage:	Store at -20°C as received.
Stability:	Stable for 12 months from date of receipt.
Gene Name:	SAM pointed domain containing ETS transcription factor
Database Link:	NP_036523 Entrez Gene 30051 Mouse Entrez Gene 25803 Human O95238



[View online »](#)

Background:

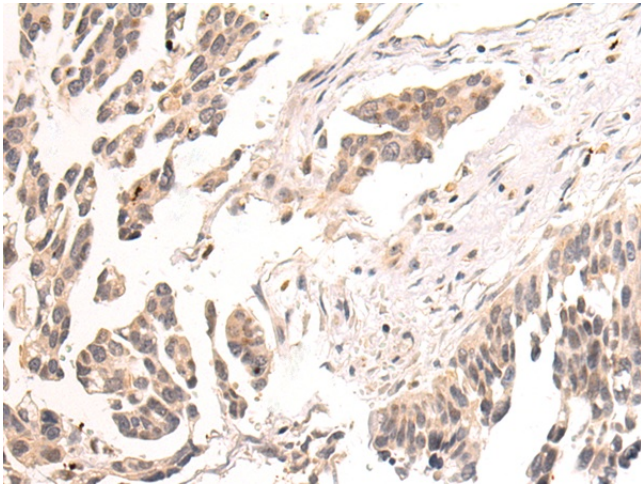
The protein encoded by this gene belongs to the ETS family of transcription factors. It is highly expressed in the prostate epithelial cells; and functions as an androgen-independent transactivator of prostate-specific antigen (PSA) promoter. Higher expression of this protein has also been reported in brain; breast; lung and ovarian tumors; compared to the corresponding normal tissues; and it shows better tumor-association than other cancer-associated molecules; making it a more suitable target for developing specific cancer therapies. Alternatively spliced transcript variants encoding different isoforms have been found for this gene.

Synonyms:

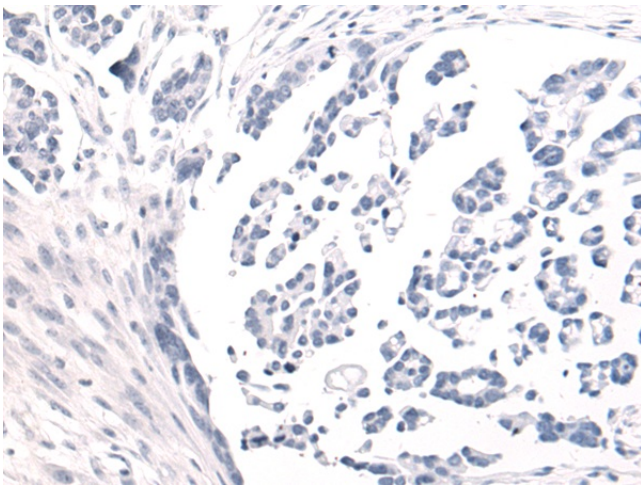
bA375E1.3; PDEF

Protein Families:

Transcription Factors

Product images:

Immunohistochemistry of paraffin-embedded Human colorectal cancer tissue using TA324209 (SPDEF Antibody) at dilution 1/40 (Original magnification: $\times 200$)



Immunohistochemistry of paraffin-embedded Human colorectal cancer tissue using TA324209 (SPDEF Antibody) at dilution 1/40, treated with fusion protein. (Original magnification: $\times 200$)