

## Product datasheet for **TA324208**

### Complement C4A (C4A) Rabbit Polyclonal Antibody

#### Product data:

Product Type:	Primary Antibodies
Applications:	WB
Recommended Dilution:	ELISA: 1:1000-2000, WB: 1:200-1000
Reactivity:	Human
Host:	Rabbit
Isotype:	IgG
Clonality:	Polyclonal
Immunogen:	Synthetic peptide (KLH-coupled) derived from human C4A
Formulation:	PBS pH7.3, 0.05% NaN <sub>3</sub> , 50% glycerol
Concentration:	lot specific
Purification:	Antigen affinity purification
Conjugation:	Unconjugated
Storage:	Store at -20°C as received.
Stability:	Stable for 12 months from date of receipt.
Predicted Protein Size:	75 kDa
Gene Name:	complement component 4A (Rodgers blood group)
Database Link:	<a href="#">NP_009224</a> <a href="#">Entrez Gene 720 Human</a> <a href="#">POCOL4</a>



[View online »](#)

**Background:**

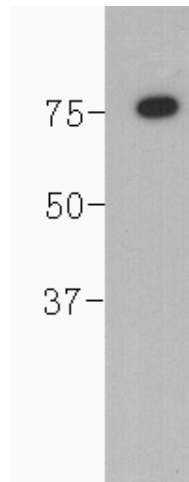
This gene encodes the acidic form of complement factor 4, part of the classical activation pathway. The protein is expressed as a single chain precursor which is proteolytically cleaved into a trimer of alpha, beta, and gamma chains prior to secretion. The trimer provides a surface for interaction between the antigen-antibody complex and other complement components. The alpha chain may be cleaved to release C4 anaphylatoxin, a mediator of local inflammation. Deficiency of this protein is associated with systemic lupus erythematosus and type I diabetes mellitus. This gene localizes to the major histocompatibility complex (MHC) class III region on chromosome 6. Varying haplotypes of this gene cluster exist, such that individuals may have 1, 2, or 3 copies of this gene. Two transcript variants encoding different isoforms have been found for this gene.

**Synonyms:**

C4; C4A2; C4A3; C4A4; C4A6; C4AD; C4S; CO4; CPAMD2; RG

**Protein Pathways:**

Complement and coagulation cascades, Systemic lupus erythematosus

**Product images:**

Predicted band size: 75 kDa. Positive control: Human serum. Recommended dilution: 1/ 200-1000. (Gel: 8%SDS-PAGE Lysate: 30 ug Primary antibody: 1/500 dilution Secondary antibody: Goat anti Rabbit IgG - H&L (HRP) at 1/10000 dilution Exposure time: 1 minute)