

## Product datasheet for **TA324206**

### Synaptotagmin VII (SYT7) Rabbit Polyclonal Antibody

#### Product data:

Product Type:	Primary Antibodies
Applications:	IHC, WB
Recommended Dilution:	WB: 500-2000 WB positive control: Lncap and SKOV3 cells IHC: 15-50 Positive control: Human thyroid cancer Predicted cell location: Cytoplasm, Nucleus
Reactivity:	Human, Mouse
Host:	Rabbit
Isotype:	IgG
Clonality:	Polyclonal
Immunogen:	Fusion protein corresponding to a region derived from 54-200 amino acids of human synaptotagmin VII
Formulation:	PBS pH7.3, 0.05% NaN <sub>3</sub> , 50% glycerol
Concentration:	lot specific
Purification:	Antigen affinity purification
Conjugation:	Unconjugated
Storage:	Store at -20°C as received.
Stability:	Stable for 12 months from date of receipt.
Predicted Protein Size:	46 kDa
Gene Name:	synaptotagmin 7
Database Link:	<a href="#">NP_001238994</a> <a href="#">Entrez Gene 54525 Mouse</a> <a href="#">Entrez Gene 9066 Human</a> <a href="#">O43581</a>



[View online »](#)

**Background:**

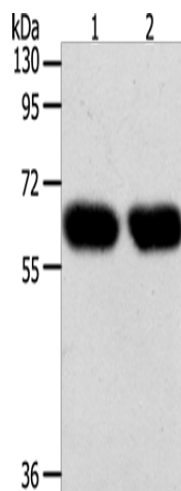
This gene is a member of the synaptotagmin gene family and encodes a protein similar to other family members that mediate calcium-dependent regulation of membrane trafficking in synaptic transmission. A similar protein in rodents mediates hormone secretion and lysosome exocytosis. In humans, expression of this gene has been associated with prostate cancer. Alternatively spliced transcript variants encoding multiple isoforms have been observed for this gene.

**Synonyms:**

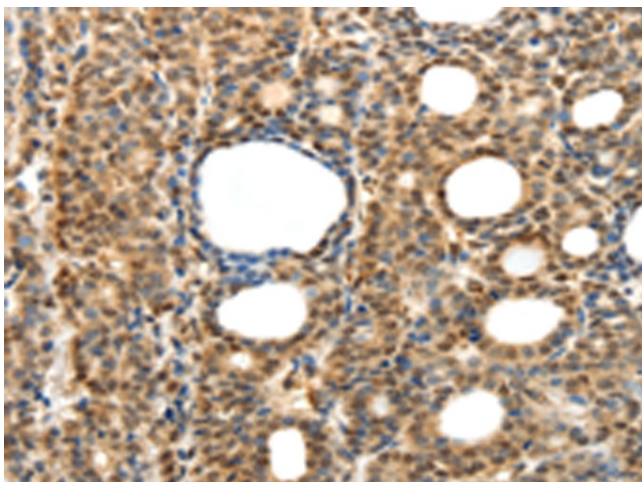
IPCA-7; IPCA7; PCANAP7; SYT-VII; SYTVII

**Protein Families:**

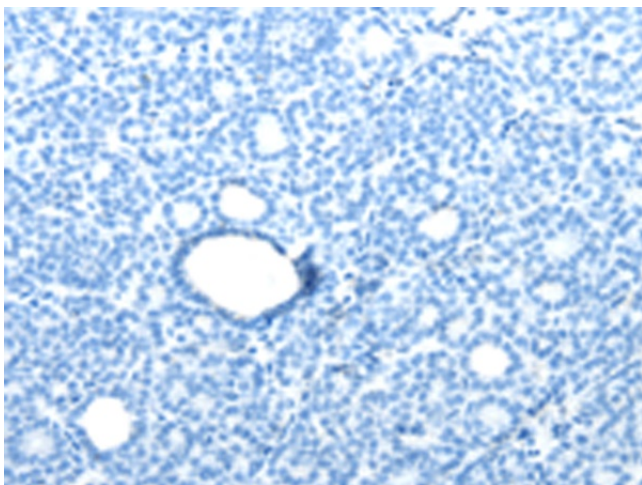
Secreted Protein, Transmembrane

**Product images:**

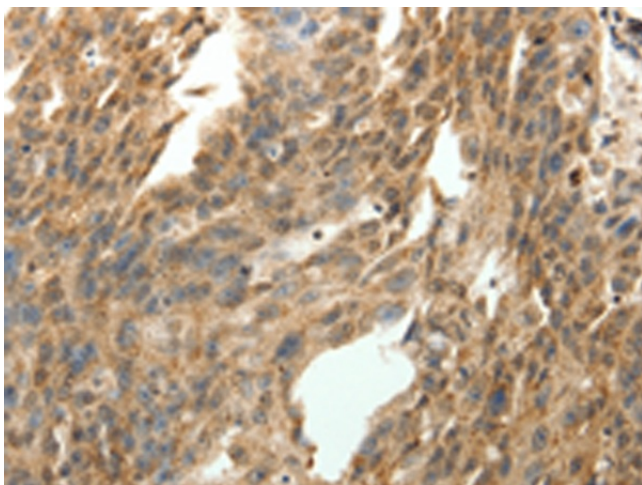
Gel: 10%SDS-PAGE  
Lysate: 40  $\mu$ g  
Lane 1-2: Lncap cells  
SKOV3 cells  
Primary antibody: TA324206 (SYT7 Antibody) at dilution 1/200  
Secondary antibody: Goat anti rabbit IgG at 1/8000 dilution  
Exposure time: 1 minute



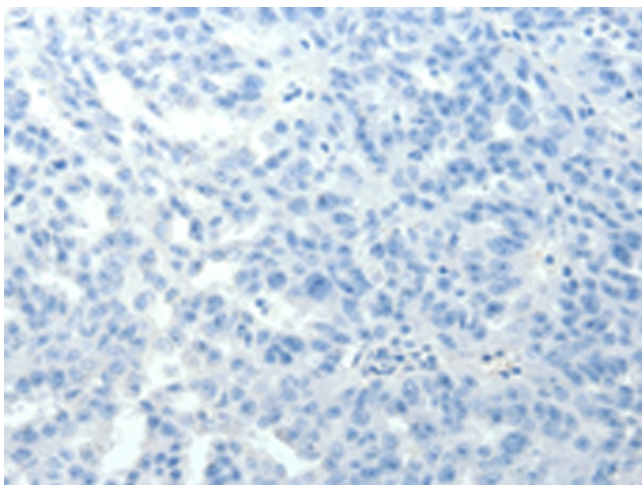
Immunohistochemistry of paraffin-embedded Human thyroid cancer tissue using TA324206 (SYT7 Antibody) at dilution 1/15 (Original magnification:  $\times$ 200)



Immunohistochemistry of paraffin-embedded Human thyroid cancer tissue using TA324206 (SYT7 Antibody) at dilution 1/15, treated with fusion protein. (Original magnification: ×200)



Immunohistochemistry of paraffin-embedded Human ovarian cancer tissue using TA324206 (SYT7 Antibody) at dilution 1/15 (Original magnification: ×200)



Immunohistochemistry of paraffin-embedded Human ovarian cancer tissue using TA324206 (SYT7 Antibody) at dilution 1/15, treated with fusion protein. (Original magnification: ×200)