

## Product datasheet for **TA324204S**

### TRPM1 Rabbit Polyclonal Antibody

#### Product data:

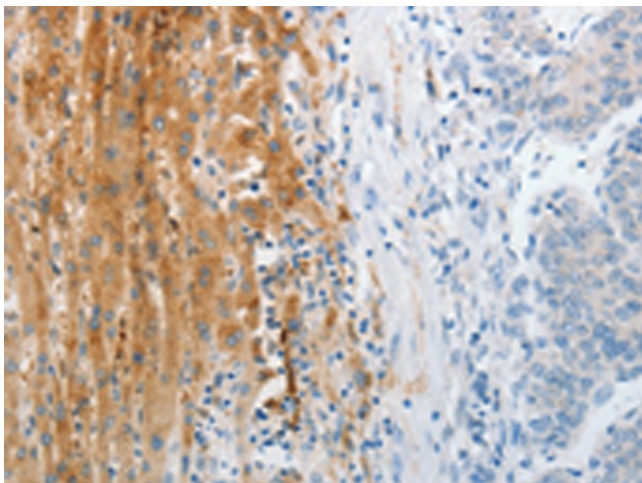
Product Type:	Primary Antibodies
Applications:	IHC
Recommended Dilution:	IHC: 25-100 Positive control: Human liver cancer Predicted cell location: Cytoplasm
Reactivity:	Human, Mouse, Rat
Host:	Rabbit
Isotype:	IgG
Clonality:	Polyclonal
Immunogen:	Synthetic peptide corresponding to a region derived from 806-820 amino acids of human transient receptor potential cation channel, subfamily M, member 1
Formulation:	PBS pH7.3, 0.05% NaN <sub>3</sub> , 50% glycerol
Purification:	Antigen affinity purification
Conjugation:	Unconjugated
Storage:	Store at -20°C as received.
Stability:	Stable for 12 months from date of receipt.
Gene Name:	transient receptor potential cation channel subfamily M member 1
Database Link:	<a href="#">NP_002411</a> <a href="#">Entrez Gene 17364 Mouse</a> <a href="#">Entrez Gene 361586 Rat</a> <a href="#">Entrez Gene 4308 Human</a> <a href="#">Q7Z4N2</a>
Background:	This gene encodes a member of the transient receptor potential melastatin subfamily of transient receptor potential ion channels. The encoded protein is a calcium permeable cation channel that is expressed in melanocytes and may play a role in melanin synthesis. Specific mutations in this gene are the cause autosomal recessive complete congenital stationary night blindness-1C. The expression of this protein is inversely correlated with melanoma aggressiveness and as such it is used as a prognostic marker for melanoma metastasis. Alternate splicing results in multiple transcript variants.
Synonyms:	CSNB1C; LTRPC1; MLSN1



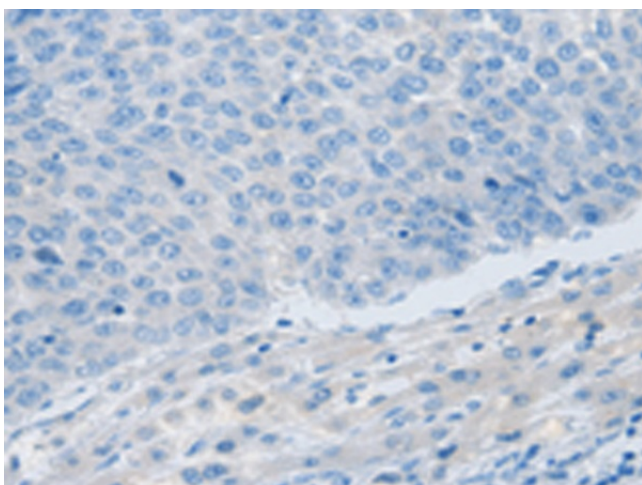
[View online »](#)

Protein Families: Druggable Genome, Ion Channels: Transient receptor potential, Transmembrane

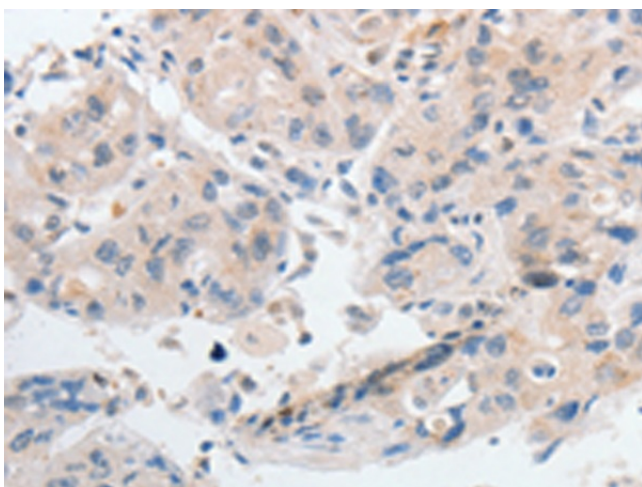
### Product images:



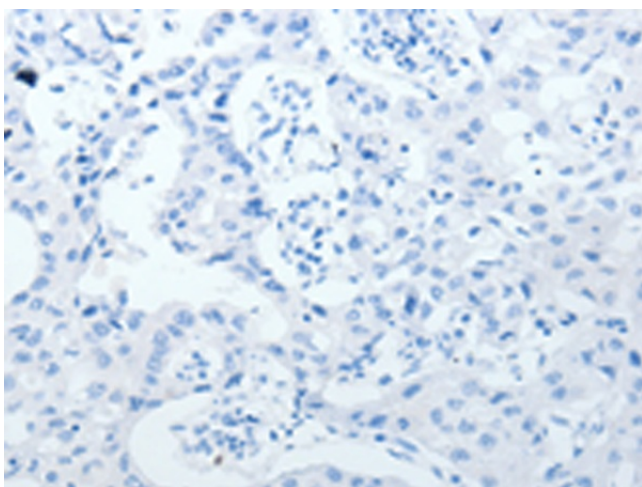
Immunohistochemistry of paraffin-embedded Human liver cancer tissue using [TA324204] (TRPM1 Antibody) at dilution 1/30 (Original magnification:  $\times 200$ )



Immunohistochemistry of paraffin-embedded Human liver cancer tissue using [TA324204] (TRPM1 Antibody) at dilution 1/30, treated with synthetic peptide. (Original magnification:  $\times 200$ )



Immunohistochemistry of paraffin-embedded Human lung cancer tissue using [TA324204] (TRPM1 Antibody) at dilution 1/30 (Original magnification:  $\times 200$ )



Immunohistochemistry of paraffin-embedded Human lung cancer tissue using [TA324204] (TRPM1 Antibody) at dilution 1/30, treated with synthetic peptide. (Original magnification:  $\times 200$ )