

Product datasheet for **TA324203**

Geminin (GMNN) Rabbit Polyclonal Antibody

Product data:

Product Type:	Primary Antibodies
Applications:	IF, WB
Recommended Dilution:	ELISA: 1:200-1000, WB: 1:100-500
Reactivity:	Human, Mouse
Host:	Rabbit
Isotype:	IgG
Clonality:	Polyclonal
Immunogen:	Synthetic peptide (KLH-coupled) derived from human GMNN
Formulation:	PBS pH7.3, 0.05% NaN ₃ , 50% glycerol
Concentration:	lot specific
Purification:	Antigen affinity purification
Conjugation:	Unconjugated
Storage:	Store at -20°C as received.
Stability:	Stable for 12 months from date of receipt.
Predicted Protein Size:	24 kDa
Gene Name:	geminin, DNA replication inhibitor
Database Link:	NP_001238918 Entrez Gene 57441 Mouse Entrez Gene 51053 Human O75496

Background: This gene encodes a protein that plays a critical role in cell cycle regulation. The encoded protein inhibits DNA replication by binding to DNA replication factor Cdt1, preventing the incorporation of minichromosome maintenance proteins into the pre-replication complex. The encoded protein is expressed during the S and G2 phases of the cell cycle and is degraded by the anaphase-promoting complex during the metaphase-anaphase transition. Increased expression of this gene may play a role in several malignancies including colon, rectal and breast cancer. Alternatively spliced transcript variants have been observed for this gene, and two pseudogenes of this gene are located on the short arm of chromosome 16.

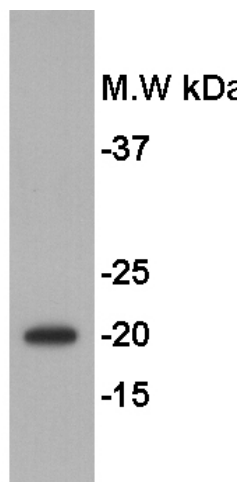
Synonyms: Gem; MGORS6



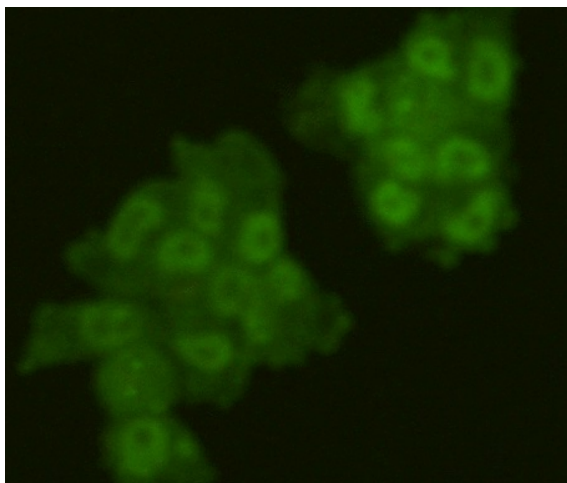
[View online »](#)

Protein Families: Druggable Genome, Stem cell - Pluripotency

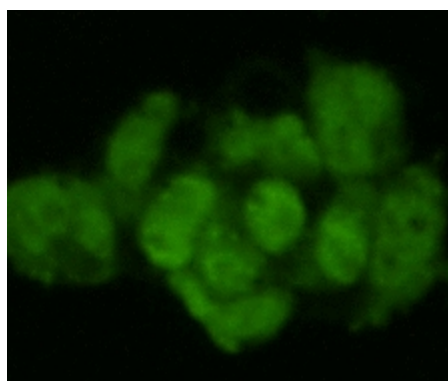
Product images:



Predicted band size: 24 kDa. Positive control: HeLa cell lysate. Recommended dilution: 1/ 100-500. (Gel: 10%SDS-PAGE Lysate: 30 ug Primary antibody: 1/200 dilution Secondary antibody: Goat anti Rabbit IgG - H&L (HRP) at 1/10000 dilution Exposure time: 1 minute)



Predicted cell location: Cytoplasm; Nucleus. Positive control: NCCIT and F9 cells. Recommended dilution: 1/50-100 The image is immunocytochemistry of methanol-fixed NCCIT cell using GMNN antibody at dilution 1/50. (Original magnification:×200)



Predicted cell location: Cytoplasm; Nucleus. Positive control: NCCIT and F9 cells. Recommended dilution: 1/50-100 The image is immunocytochemistry of methanol-fixed F9 cell using GMNN antibody at dilution 1/50. (Original magnification:×200)