

Product datasheet for **TA324201**

SP1 Rabbit Polyclonal Antibody

Product data:

Product Type:	Primary Antibodies
Applications:	WB
Recommended Dilution:	WB: 1:500-1000
Reactivity:	Human, Rat
Modifications:	Phospho-specific
Host:	Rabbit
Isotype:	IgG
Clonality:	Polyclonal
Immunogen:	Peptide sequence around phosphorylation site of threonine 739 (T-A-T(p)-P-S) derived from human SP1
Formulation:	PBS pH7.3, 0.05% NaN ₃ , 50% glycerol
Concentration:	lot specific
Purification:	Antigen affinity purification
Conjugation:	Unconjugated
Storage:	Store at -20°C as received.
Stability:	Stable for 12 months from date of receipt.
Predicted Protein Size:	81 kDa
Gene Name:	Sp1 transcription factor
Database Link:	NP_612482 Entrez Gene 24790 Rat Entrez Gene 6667 Human P08047



[View online »](#)

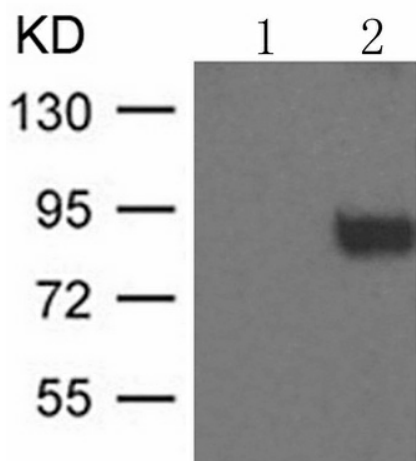
Background: Transcription factor that can activate or repress transcription in response to physiological and pathological stimuli. Binds with high affinity to GC-rich motifs and regulates the expression of a large number of genes involved in a variety of processes such as cell growth, apoptosis, differentiation and immune responses. Highly regulated by post-translational modifications (phosphorylations, sumoylation, proteolytic cleavage, glycosylation and acetylation). Binds also the PDGFR-alpha G-box promoter. May have a role in modulating the cellular response to DNA damage. Implicated in chromatin remodeling. Plays a role in the recruitment of SMARCA4/BRG1 on the c-FOS promoter. Plays an essential role in the regulation of FE65 gene expression.

Synonyms: Sp1 transcription factor; specificity protein 1

Protein Families: Druggable Genome, ES Cell Differentiation/IPS, Stem cell - Pluripotency, Stem cell relevant signaling - JAK/STAT signaling pathway, Transcription Factors

Protein Pathways: Huntington's disease, TGF-beta signaling pathway

Product images:



Predicted band size: 81 kDa. Positive control: NIH/3T3 cells treated with starvation lysate. Recommended dilution: 1/ 500-1000. (Gel: 8%SDS-PAGE Lane 1: NIH/3T3 cells untreated with starvation lysate Lane 2: NIH/3T3 cells treated with starvation lysate Lysates: 30 ug per lane Primary antibody: 1/500 dilution Secondary antibody: Goat anti Rabbit IgG - H&L (HRP) at 1/10000 dilution Exposure time: 1 minute)