

## Product datasheet for **TA324196**

### STAT4 Rabbit Polyclonal Antibody

#### Product data:

Product Type:	Primary Antibodies
Applications:	IHC, WB
Recommended Dilution:	WB: 500-2000 WB positive control: TM4 and 293T cell lysates IHC: 50-300 Positive control: Human ovarian cancer Predicted cell location: Cytoplasm and Nucleus
Reactivity:	Human, Mouse
Host:	Rabbit
Isotype:	IgG
Clonality:	Polyclonal
Immunogen:	Fusion protein corresponding to a region derived from 439-748 amino acids of Human Signal transducer and activator of transcription 4
Formulation:	PBS pH7.3, 0.05% NaN <sub>3</sub> , 50% glycerol
Concentration:	lot specific
Purification:	Antigen affinity purification
Conjugation:	Unconjugated
Storage:	Store at -20°C as received.
Stability:	Stable for 12 months from date of receipt.
Gene Name:	signal transducer and activator of transcription 4
Database Link:	<a href="#">NP_003142</a> <a href="#">Entrez Gene 20849 Mouse</a> <a href="#">Entrez Gene 6775 Human</a> <a href="#">Q14765</a>



[View online »](#)

**Background:**

The protein encoded by this gene is a member of the STAT family of transcription factors. In response to cytokines and growth factors; STAT family members are phosphorylated by the receptor associated kinases; and then form homo- or heterodimers that translocate to the cell nucleus where they act as transcription activators. This protein is essential for mediating responses to IL12 in lymphocytes; and regulating the differentiation of T helper cells. Mutations in this gene may be associated with systemic lupus erythematosus and rheumatoid arthritis. Alternate splicing results in multiple transcript variants that encode the same protein.

**Synonyms:**

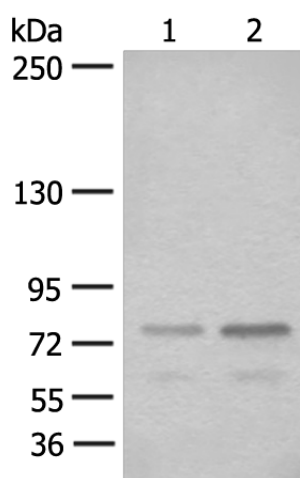
SLEB11

**Protein Families:**

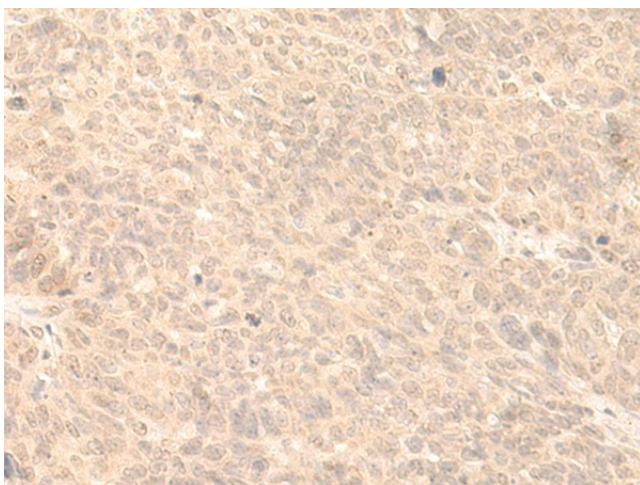
Druggable Genome, Transcription Factors

**Protein Pathways:**

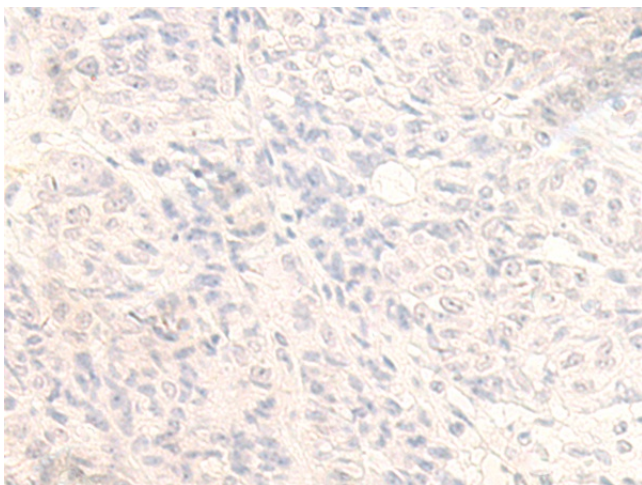
Jak-STAT signaling pathway

**Product images:**

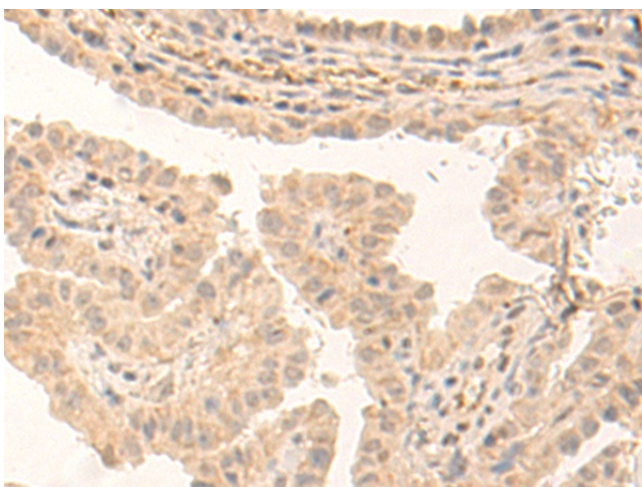
Gel: 6%SDS-PAGE  
Lysate: 40  $\mu$ g  
Lane 1-2: TM4 and 293T cell lysates  
Primary antibody: TA324196 (STAT4 Antibody) at dilution 1/400  
Secondary antibody: Goat anti rabbit IgG at 1/8000 dilution  
Exposure time: 1 minute



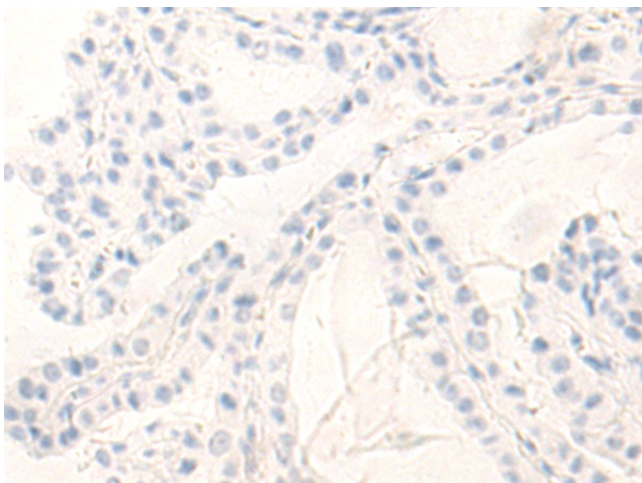
Immunohistochemistry of paraffin-embedded Human ovarian cancer tissue using TA324196 (STAT4 Antibody) at dilution 1/75 (Original magnification:  $\times$ 200)



Immunohistochemistry of paraffin-embedded Human ovarian cancer tissue using TA324196 (STAT4 Antibody) at dilution 1/75, treated with fusion protein. (Original magnification:  $\times 200$ )



Immunohistochemistry of paraffin-embedded Human thyroid cancer tissue using TA324196 (STAT4 Antibody) at dilution 1/75 (Original magnification:  $\times 200$ )



Immunohistochemistry of paraffin-embedded Human thyroid cancer tissue using TA324196 (STAT4 Antibody) at dilution 1/75, treated with fusion protein. (Original magnification:  $\times 200$ )