

Product datasheet for **TA324193S**

IL15RA Rabbit Polyclonal Antibody

Product data:

Product Type:	Primary Antibodies
Applications:	IHC, WB
Recommended Dilution:	WB: 500-2000 WB positive control: Mouse spleen tissue, Mouse fat tissue, Mouse lung tissue, Human placenta tissue, Rat liver tissue lysates IHC: 50-200 Positive control: Human tonsil Predicted cell location: Cytoplasm
Reactivity:	Human, Mouse, Rat
Host:	Rabbit
Isotype:	IgG
Clonality:	Polyclonal
Immunogen:	Synthetic peptide corresponding to a region derived from 250-264 amino acids of Human interleukin 15 receptor, alpha
Formulation:	PBS pH7.3, 0.05% NaN ₃ , 50% glycerol
Purification:	Antigen affinity purification
Conjugation:	Unconjugated
Storage:	Store at -20°C as received.
Stability:	Stable for 12 months from date of receipt.
Predicted Protein Size:	28 kDa
Gene Name:	interleukin 15 receptor subunit alpha
Database Link:	NP_001230468 Entrez Gene 16169 Mouse Entrez Gene 690369 Rat Entrez Gene 3601 Human Q13261



[View online »](#)

Background:

This gene encodes a cytokine receptor that specifically binds interleukin 15 (IL15) with high affinity. The receptors of IL15 and IL2 share two subunits; IL2R beta and IL2R gamma. This forms the basis of many overlapping biological activities of IL15 and IL2. The protein encoded by this gene is structurally related to IL2R alpha; an additional IL2-specific alpha subunit necessary for high affinity IL2 binding. Unlike IL2RA; IL15RA is capable of binding IL15 with high affinity independent of other subunits; which suggests distinct roles between IL15 and IL2. This receptor is reported to enhance cell proliferation and expression of apoptosis inhibitor BCL2L1/BCL2-XL and BCL2. Multiple alternatively spliced transcript variants of this gene have been reported.

Synonyms:

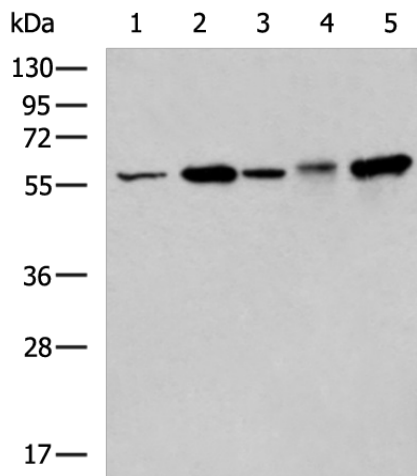
CD215

Protein Families:

Druggable Genome, Secreted Protein

Protein Pathways:

Cytokine-cytokine receptor interaction, Jak-STAT signaling pathway

Product images:


Gel: 8%SDS-PAGE

Lysate: 40 µg

Lane 1-5: Mouse spleen tissue

Mouse fat tissue

Mouse lung tissue

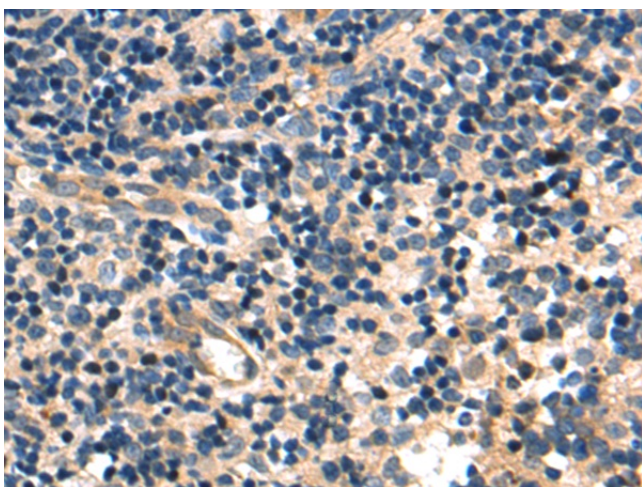
Human placenta tissue

Rat liver tissue lysates

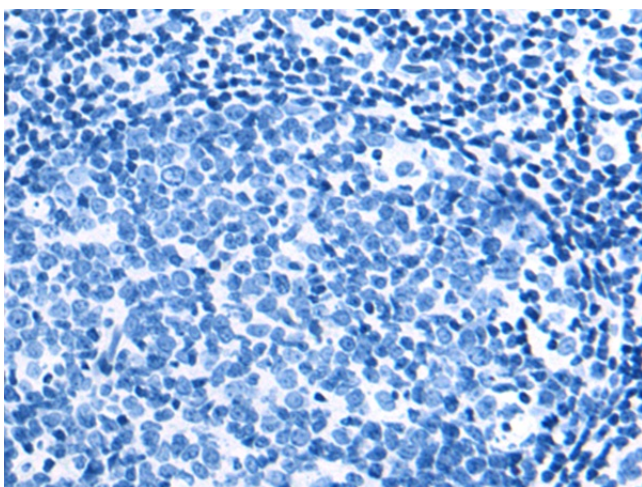
Primary antibody: [TA324193] (IL15RA Antibody)
at dilution 1/200

Secondary antibody: Goat anti rabbit IgG at
1/5000 dilution

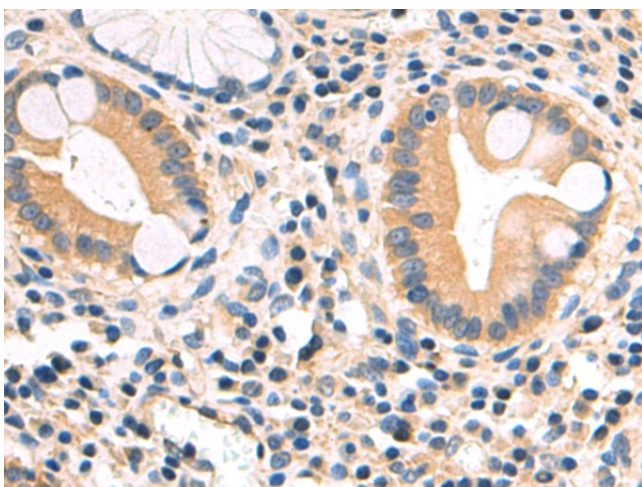
Exposure time: 30 seconds



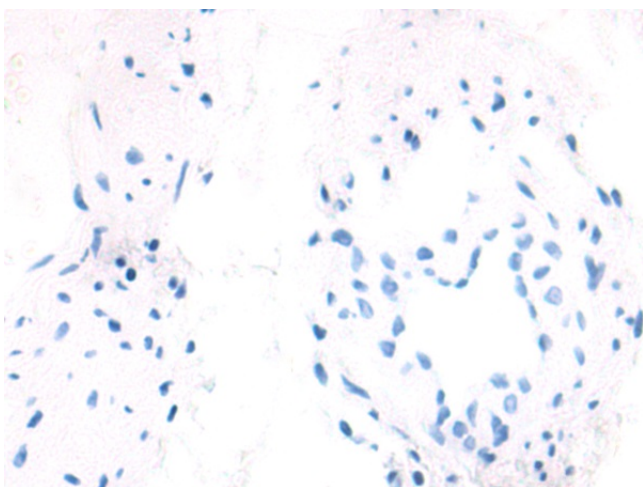
Immunohistochemistry of paraffin-embedded Human tonsil tissue using [TA324193] (IL15RA Antibody) at dilution 1/50 (Original magnification: $\times 200$)



Immunohistochemistry of paraffin-embedded Human tonsil tissue using [TA324193] (IL15RA Antibody) at dilution 1/50, treated with synthetic peptide. (Original magnification: $\times 200$)



Immunohistochemistry of paraffin-embedded Human gastric cancer tissue using [TA324193] (IL15RA Antibody) at dilution 1/50 (Original magnification: $\times 200$)



Immunohistochemistry of paraffin-embedded Human gastric cancer tissue using [TA324193] (IL15RA Antibody) at dilution 1/50, treated with synthetic peptide. (Original magnification: ×200)