

Product datasheet for **TA324193**

IL15RA Rabbit Polyclonal Antibody

Product data:

| | |
|-------------------------|---|
| Product Type: | Primary Antibodies |
| Applications: | IHC, WB |
| Recommended Dilution: | WB: 500-2000 WB positive control: Mouse spleen tissue, Mouse fat tissue, Mouse lung tissue, Human placenta tissue, Rat liver tissue lysates IHC: 50-200 Positive control: Human tonsil Predicted cell location: Cytoplasm |
| Reactivity: | Human, Mouse, Rat |
| Host: | Rabbit |
| Isotype: | IgG |
| Clonality: | Polyclonal |
| Immunogen: | Synthetic peptide corresponding to a region derived from 250-264 amino acids of Human interleukin 15 receptor, alpha |
| Formulation: | PBS pH7.3, 0.05% NaN ₃ , 50% glycerol |
| Concentration: | lot specific |
| Purification: | Antigen affinity purification |
| Conjugation: | Unconjugated |
| Storage: | Store at -20°C as received. |
| Stability: | Stable for 12 months from date of receipt. |
| Predicted Protein Size: | 28 kDa |
| Gene Name: | interleukin 15 receptor subunit alpha |
| Database Link: | NP_001230468 Entrez Gene 16169 Mouse Entrez Gene 690369 Rat Entrez Gene 3601 Human Q13261 |



[View online »](#)

Background:

This gene encodes a cytokine receptor that specifically binds interleukin 15 (IL15) with high affinity. The receptors of IL15 and IL2 share two subunits; IL2R beta and IL2R gamma. This forms the basis of many overlapping biological activities of IL15 and IL2. The protein encoded by this gene is structurally related to IL2R alpha; an additional IL2-specific alpha subunit necessary for high affinity IL2 binding. Unlike IL2RA; IL15RA is capable of binding IL15 with high affinity independent of other subunits; which suggests distinct roles between IL15 and IL2. This receptor is reported to enhance cell proliferation and expression of apoptosis inhibitor BCL2L1/BCL2-XL and BCL2. Multiple alternatively spliced transcript variants of this gene have been reported.

Synonyms:

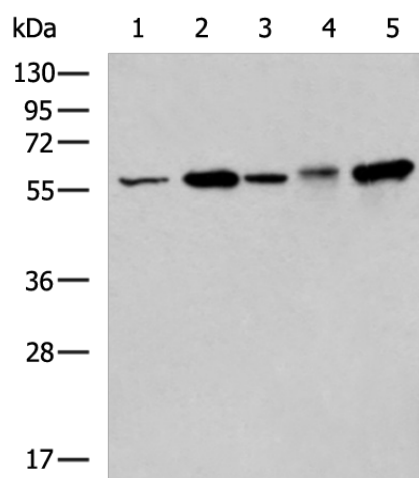
CD215

Protein Families:

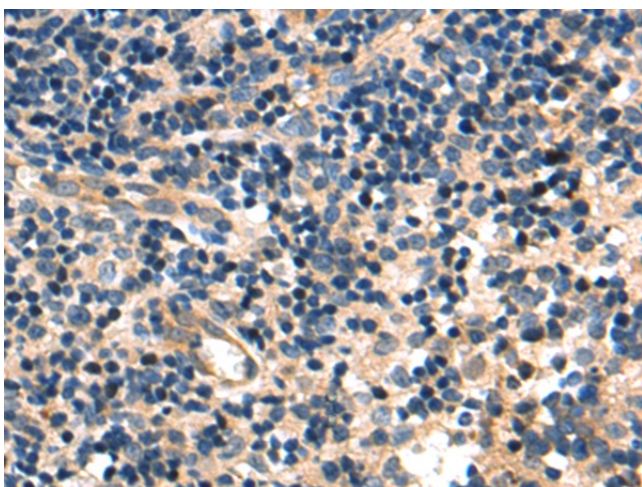
Druggable Genome, Secreted Protein

Protein Pathways:

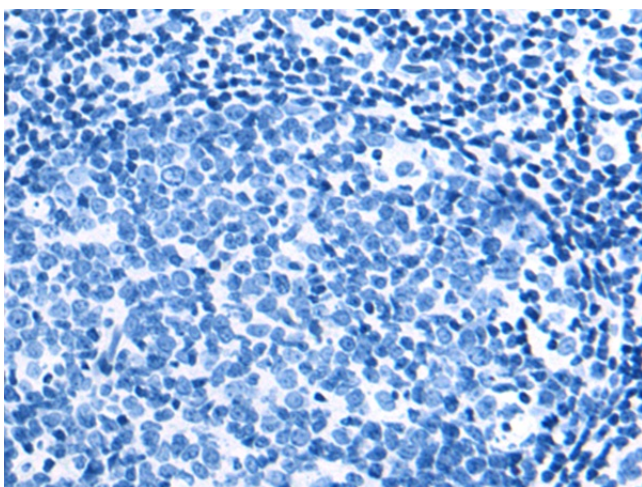
Cytokine-cytokine receptor interaction, Jak-STAT signaling pathway

Product images:

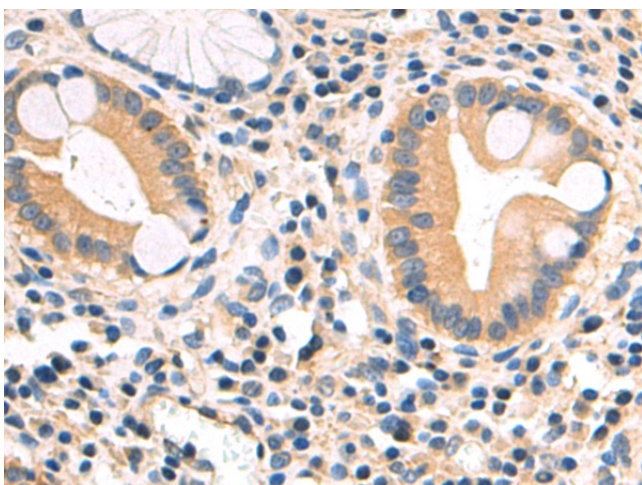
Gel: 8%SDS-PAGE
Lysate: 40 μ g
Lane 1-5: Mouse spleen tissue
Mouse fat tissue
Mouse lung tissue
Human placenta tissue
Rat liver tissue lysates
Primary antibody: TA324193 (IL15RA Antibody) at dilution 1/200
Secondary antibody: Goat anti rabbit IgG at 1/5000 dilution
Exposure time: 30 seconds



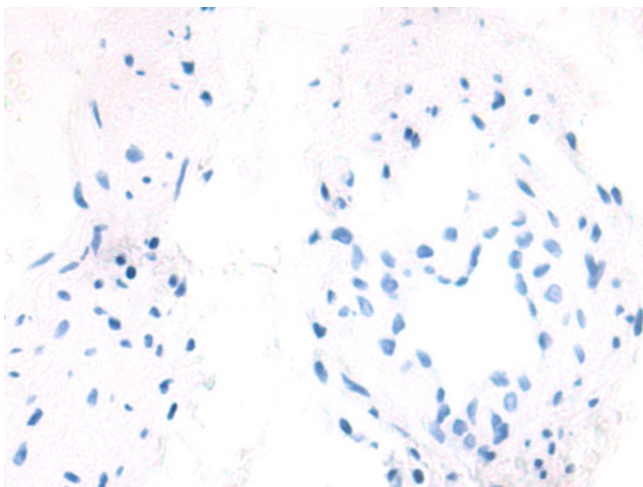
Immunohistochemistry of paraffin-embedded Human tonsil tissue using TA324193 (IL15RA Antibody) at dilution 1/50 (Original magnification: $\times 200$)



Immunohistochemistry of paraffin-embedded Human tonsil tissue using TA324193 (IL15RA Antibody) at dilution 1/50, treated with synthetic peptide. (Original magnification: $\times 200$)



Immunohistochemistry of paraffin-embedded Human gastric cancer tissue using TA324193 (IL15RA Antibody) at dilution 1/50 (Original magnification: $\times 200$)



Immunohistochemistry of paraffin-embedded Human gastric cancer tissue using TA324193 (IL15RA Antibody) at dilution 1/50, treated with synthetic peptide. (Original magnification: ×200)