

## Product datasheet for **TA324192**

### IL15RA Rabbit Polyclonal Antibody

#### Product data:

Product Type:	Primary Antibodies
Applications:	IHC, WB
Recommended Dilution:	WB: 200-1000 WB positive control: Rat liver tissue, Mouse fat tissue lysates IHC: 50-200 Positive control: Human liver cancer Predicted cell location: Cytoplasm
Reactivity:	Human, Mouse, Rat
Host:	Rabbit
Isotype:	IgG
Clonality:	Polyclonal
Immunogen:	Synthetic peptide corresponding to a region derived from 250-264 amino acids of Human interleukin 15 receptor, alpha
Formulation:	PBS pH7.3, 0.05% NaN <sub>3</sub> , 50% glycerol
Concentration:	lot specific
Purification:	Antigen affinity purification
Conjugation:	Unconjugated
Storage:	Store at -20°C as received.
Stability:	Stable for 12 months from date of receipt.
Predicted Protein Size:	28 kDa
Gene Name:	interleukin 15 receptor subunit alpha
Database Link:	<a href="#">NP_001230468</a> <a href="#">Entrez Gene 16169 Mouse</a> <a href="#">Entrez Gene 690369 Rat</a> <a href="#">Entrez Gene 3601 Human</a> <a href="#">Q13261</a>



[View online »](#)

**Background:**

This gene encodes a cytokine receptor that specifically binds interleukin 15 (IL15) with high affinity. The receptors of IL15 and IL2 share two subunits; IL2R beta and IL2R gamma. This forms the basis of many overlapping biological activities of IL15 and IL2. The protein encoded by this gene is structurally related to IL2R alpha; an additional IL2-specific alpha subunit necessary for high affinity IL2 binding. Unlike IL2RA; IL15RA is capable of binding IL15 with high affinity independent of other subunits; which suggests distinct roles between IL15 and IL2. This receptor is reported to enhance cell proliferation and expression of apoptosis inhibitor BCL2L1/BCL2-XL and BCL2. Multiple alternatively spliced transcript variants of this gene have been reported.

**Synonyms:**

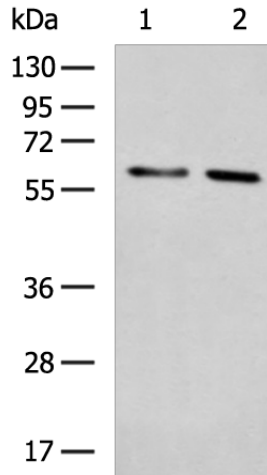
CD215

**Protein Families:**

Druggable Genome, Secreted Protein

**Protein Pathways:**

Cytokine-cytokine receptor interaction, Jak-STAT signaling pathway

**Product images:**

Gel: 8%SDS-PAGE

Lysate: 40 µg

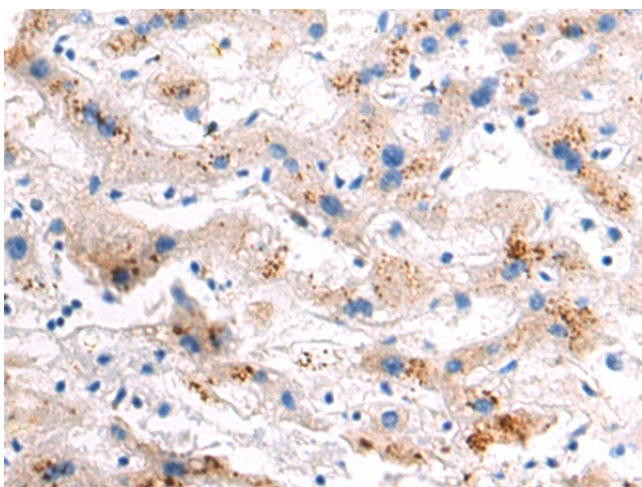
Lane 1-2: Rat liver tissue

Mouse fat tissue lysates

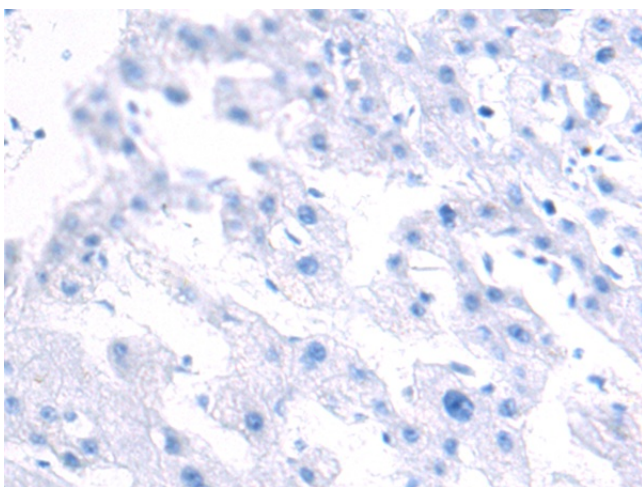
Primary antibody: TA324192 (IL15RA Antibody) at dilution 1/200

Secondary antibody: Goat anti rabbit IgG at 1/5000 dilution

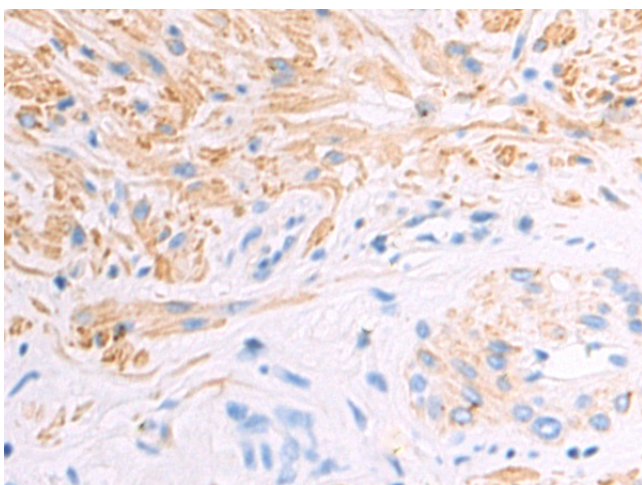
Exposure time: 30 seconds



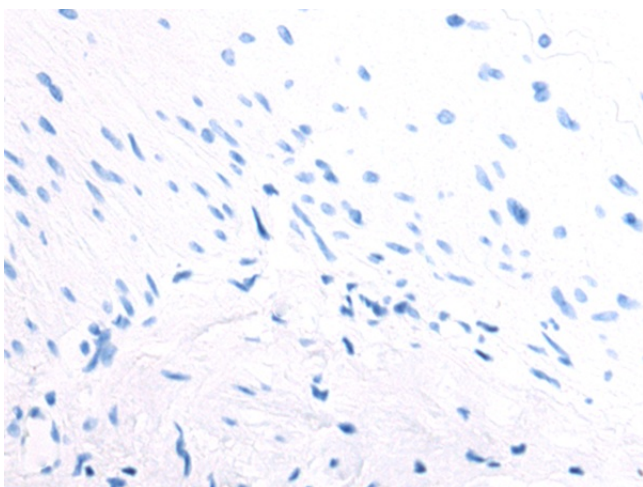
Immunohistochemistry of paraffin-embedded Human liver cancer tissue using TA324192 (IL15RA Antibody) at dilution 1/50 (Original magnification: ×200)



Immunohistochemistry of paraffin-embedded Human liver cancer tissue using TA324192 (IL15RA Antibody) at dilution 1/50, treated with synthetic peptide. (Original magnification: ×200)



Immunohistochemistry of paraffin-embedded Human prostate cancer tissue using TA324192 (IL15RA Antibody) at dilution 1/50 (Original magnification: ×200)



Immunohistochemistry of paraffin-embedded Human prostate cancer tissue using TA324192 (IL15RA Antibody) at dilution 1/50, treated with synthetic peptide. (Original magnification:  $\times 200$ )