

## Product datasheet for **TA324190**

### IL18 Rabbit Polyclonal Antibody

#### Product data:

Product Type:	Primary Antibodies
Applications:	IHC, WB
Recommended Dilution:	WB: 500-2000 WB positive control: Hela and HepG2 cell lysates IHC: 50-100 Positive control: Human breast cancer Predicted cell location: Secreted
Reactivity:	Human
Host:	Rabbit
Isotype:	IgG
Clonality:	Polyclonal
Immunogen:	Full length fusion protein
Formulation:	PBS pH7.3, 0.05% NaN <sub>3</sub> , 50% glycerol
Concentration:	lot specific
Purification:	Antigen affinity purification
Conjugation:	Unconjugated
Storage:	Store at -20°C as received.
Stability:	Stable for 12 months from date of receipt.
Predicted Protein Size:	22 kDa
Gene Name:	interleukin 18
Database Link:	<a href="#">NP_001230140</a> <a href="#">Entrez Gene 3606 Human</a> <a href="#">Q14116</a>
Background:	The protein encoded by this gene is a proinflammatory cytokine that augments natural killer cell activity in spleen cells; and stimulates interferon gamma production in T-helper type I cells. Alternatively spliced transcript variants encoding different isoforms have been found for this gene
Synonyms:	IGIF; IL-1g; IL-18; IL1F4

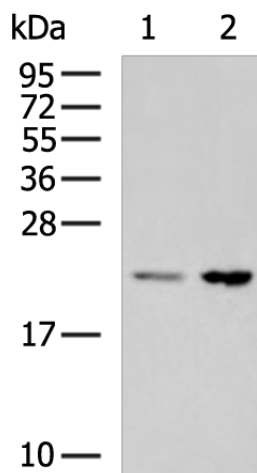


[View online »](#)

**Protein Families:** Druggable Genome, Secreted Protein

**Protein Pathways:** Cytokine-cytokine receptor interaction, Cytosolic DNA-sensing pathway, NOD-like receptor signaling pathway

### Product images:



Gel: 12%SDS-PAGE

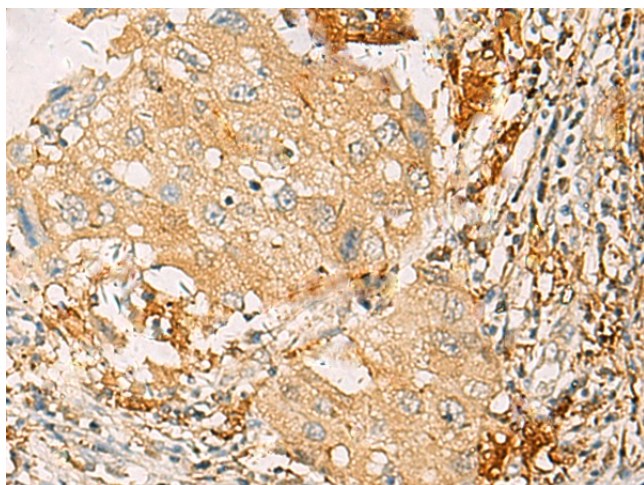
Lysate: 40  $\mu$ g

Lane 1-2: HeLa and HepG2 cell lysates

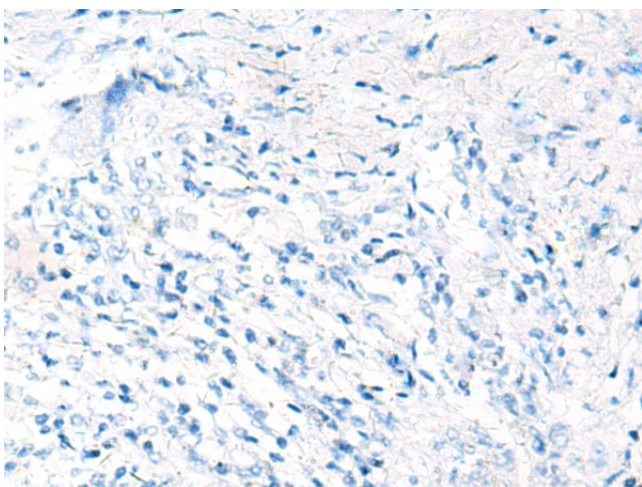
Primary antibody: TA324190 (IL18 Antibody) at dilution 1/800

Secondary antibody: Goat anti rabbit IgG at 1/5000 dilution

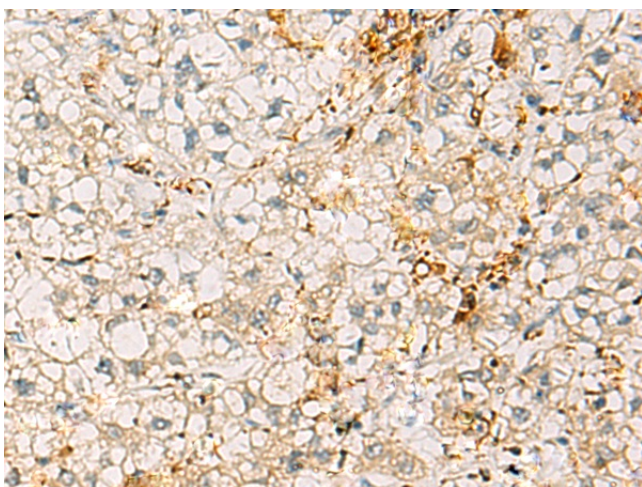
Exposure time: 20 seconds



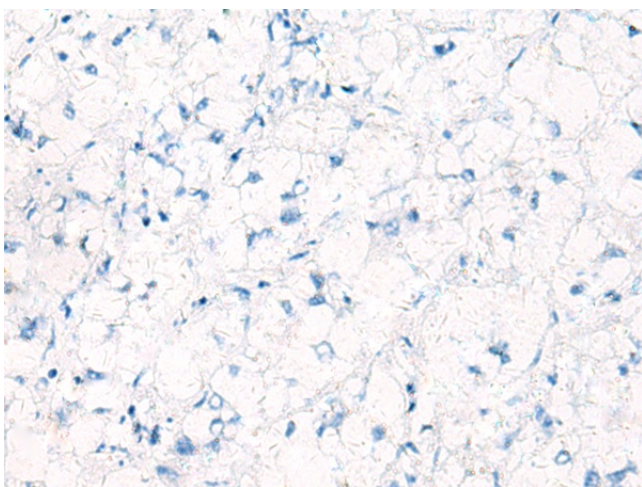
Immunohistochemistry of paraffin-embedded Human breast cancer tissue using TA324190 (IL18 Antibody) at dilution 1/40 (Original magnification:  $\times 200$ )



Immunohistochemistry of paraffin-embedded Human breast cancer tissue using TA324190 (IL18 Antibody) at dilution 1/40, treated with fusion protein. (Original magnification: x200)



Immunohistochemistry of paraffin-embedded Human liver cancer tissue using TA324190 (IL18 Antibody) at dilution 1/40 (Original magnification: x200)



Immunohistochemistry of paraffin-embedded Human liver cancer tissue using TA324190 (IL18 Antibody) at dilution 1/40, treated with fusion protein. (Original magnification: x200)