

Product datasheet for **TA324188S**

Kallikrein 7 (KLK7) Rabbit Polyclonal Antibody

Product data:

Product Type:	Primary Antibodies
Applications:	IHC, WB
Recommended Dilution:	WB: 500-2000 WB positive control: Mouse brain and kidney tissue IHC: 25-100 Positive control: Human esophagus cancer Predicted cell location: Cytoplasm, Nucleus
Reactivity:	Human, Mouse
Host:	Rabbit
Isotype:	IgG
Clonality:	Polyclonal
Immunogen:	Fusion protein corresponding to a region derived from 30-253 amino acids of human kallikrein-related peptidase 7kallikrein-related peptidase 7
Formulation:	PBS pH7.3, 0.05% NaN ₃ , 50% glycerol
Purification:	Antigen affinity purification
Conjugation:	Unconjugated
Storage:	Store at -20°C as received.
Stability:	Stable for 12 months from date of receipt.
Predicted Protein Size:	28 kDa
Gene Name:	kallikrein related peptidase 7
Database Link:	NP_001230055 Entrez Gene 23993 Mouse Entrez Gene 5650 Human P49862



[View online »](#)

Background:

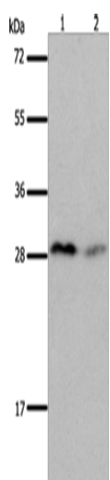
This gene encodes a member of the kallikrein subfamily of serine proteases. These enzymes have diverse physiological functions and many kallikrein genes are biomarkers for cancer. The encoded protein has chymotrypsin-like activity and plays a role in the proteolysis of intercellular cohesive structures that precedes desquamation; the shedding of the outermost layer of the epidermis. The encoded protein may play a role in cancer invasion and metastasis; and increased expression of this gene is associated with unfavorable prognosis and progression of several types of cancer. Polymorphisms in this gene may play a role in the development of atopic dermatitis. Alternatively spliced transcript variants encoding multiple isoforms have been observed for this gene; which is one of fifteen kallikrein subfamily members located in a gene cluster on chromosome 19.

Synonyms:

hK7; PRSS6; SCCE

Protein Families:

Druggable Genome, Secreted Protein

Product images:

Gel: 12%SDS-PAGE

Lysate: 40 µg

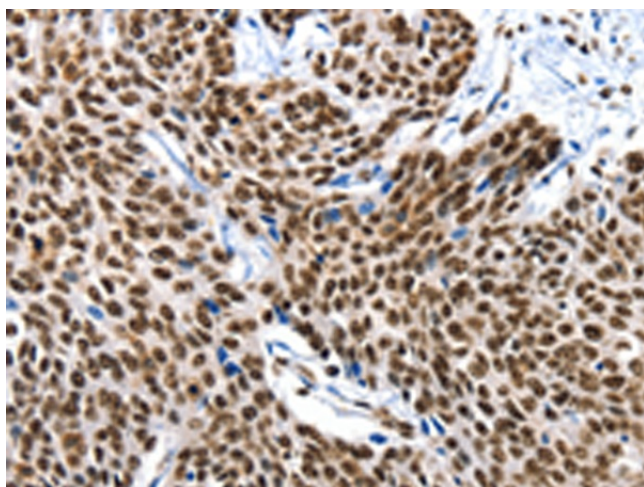
Lane 1-2: Mouse brain tissue

Mouse kidney tissue

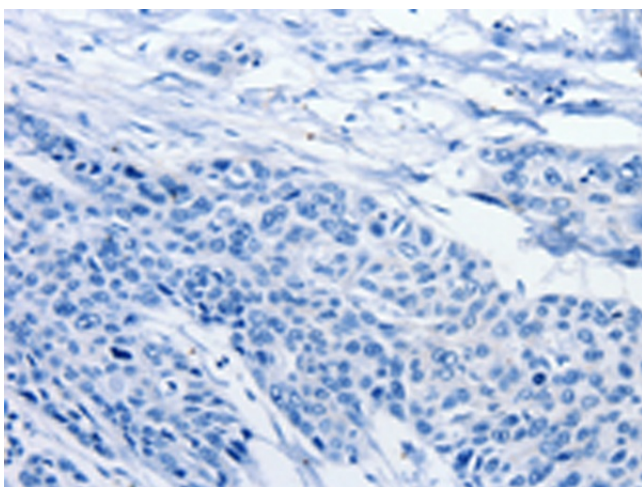
Primary antibody: [TA324188] (KLK7 Antibody) at dilution 1/600

Secondary antibody: Goat anti rabbit IgG at 1/8000 dilution

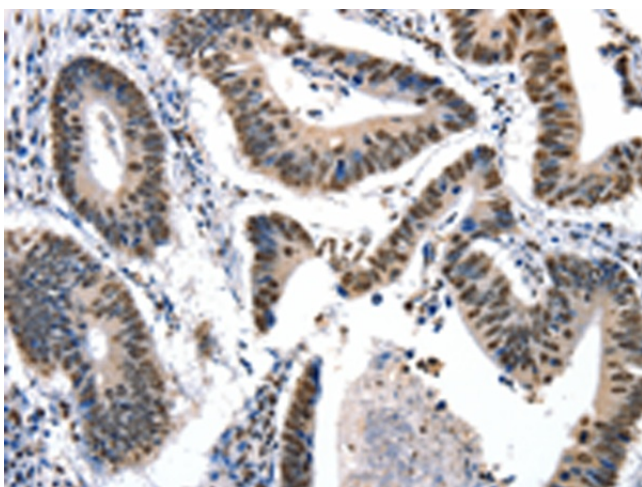
Exposure time: 20 seconds



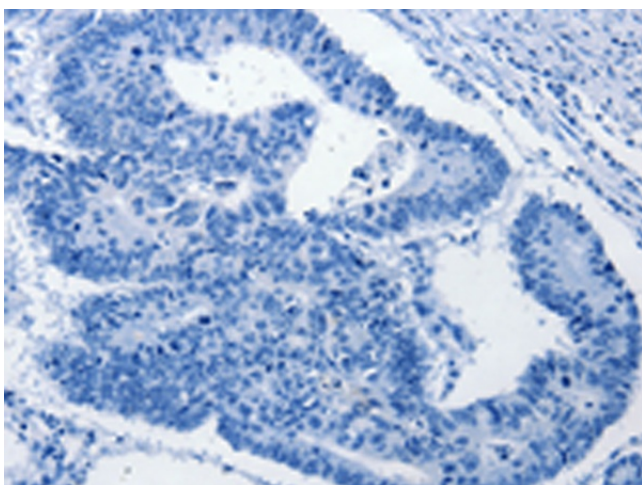
Immunohistochemistry of paraffin-embedded Human esophagus cancer tissue using [TA324188] (KLK7 Antibody) at dilution 1/10 (Original magnification: ×200)



Immunohistochemistry of paraffin-embedded Human esophagus cancer tissue using [TA324188] (KLK7 Antibody) at dilution 1/10, treated with fusion protein. (Original magnification: $\times 200$)



Immunohistochemistry of paraffin-embedded Human colon cancer tissue using [TA324188] (KLK7 Antibody) at dilution 1/10 (Original magnification: $\times 200$)



Immunohistochemistry of paraffin-embedded Human colon cancer tissue using [TA324188] (KLK7 Antibody) at dilution 1/10, treated with fusion protein. (Original magnification: $\times 200$)