

## Product datasheet for **TA324187S**

### Kallikrein 7 (KLK7) Rabbit Polyclonal Antibody

#### Product data:

Product Type:	Primary Antibodies
Applications:	IHC
Recommended Dilution:	IHC: 25-100 Positive control: Human colon cancer Predicted cell location: Cytoplasm, Nucleus
Reactivity:	Human
Host:	Rabbit
Isotype:	IgG
Clonality:	Polyclonal
Immunogen:	Fusion protein corresponding to a region derived from 30-253 amino acids of human kallikrein-related peptidase 7
Formulation:	PBS pH7.3, 0.05% NaN <sub>3</sub> , 50% glycerol
Purification:	Antigen affinity purification
Conjugation:	Unconjugated
Storage:	Store at -20°C as received.
Stability:	Stable for 12 months from date of receipt.
Gene Name:	kallikrein related peptidase 7
Database Link:	<a href="#">NP_644806</a> <a href="#">Entrez Gene 5650 Human</a> <a href="#">P49862</a>



[View online »](#)

**Background:**

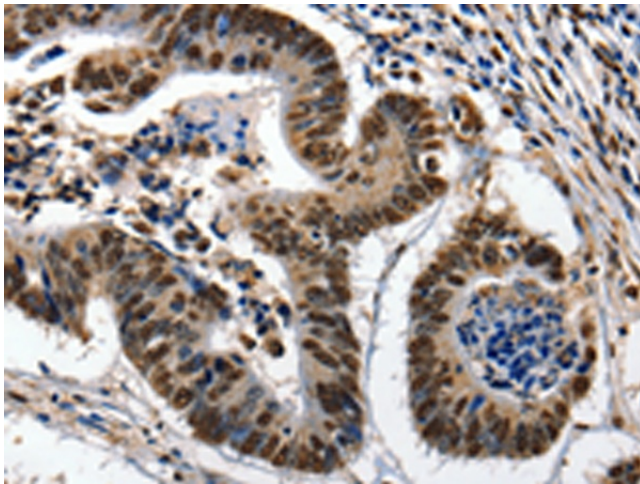
This gene encodes a member of the kallikrein subfamily of serine proteases. These enzymes have diverse physiological functions and many kallikrein genes are biomarkers for cancer. The encoded protein has chymotrypsin-like activity and plays a role in the proteolysis of intercellular cohesive structures that precedes desquamation; the shedding of the outermost layer of the epidermis. The encoded protein may play a role in cancer invasion and metastasis; and increased expression of this gene is associated with unfavorable prognosis and progression of several types of cancer. Polymorphisms in this gene may play a role in the development of atopic dermatitis. Alternatively spliced transcript variants encoding multiple isoforms have been observed for this gene; which is one of fifteen kallikrein subfamily members located in a gene cluster on chromosome 19.

**Synonyms:**

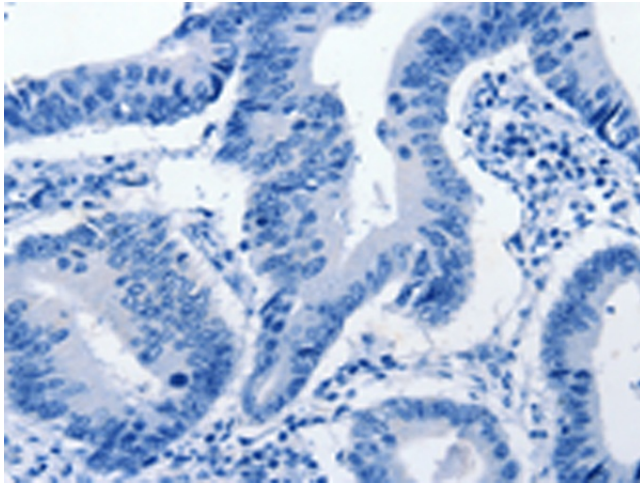
hK7; PRSS6; SCCE

**Protein Families:**

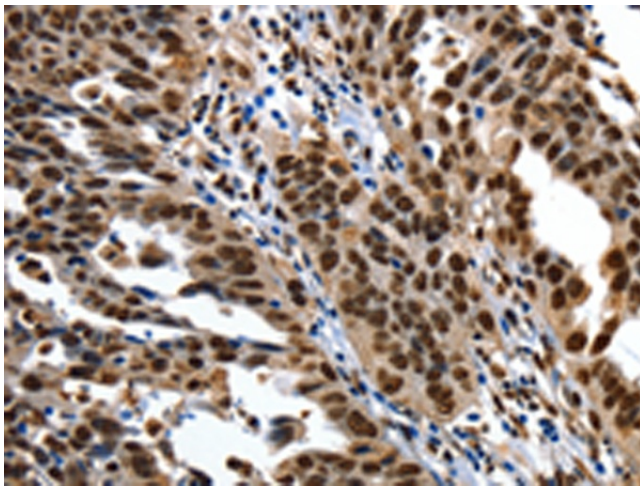
Druggable Genome, Secreted Protein

**Product images:**

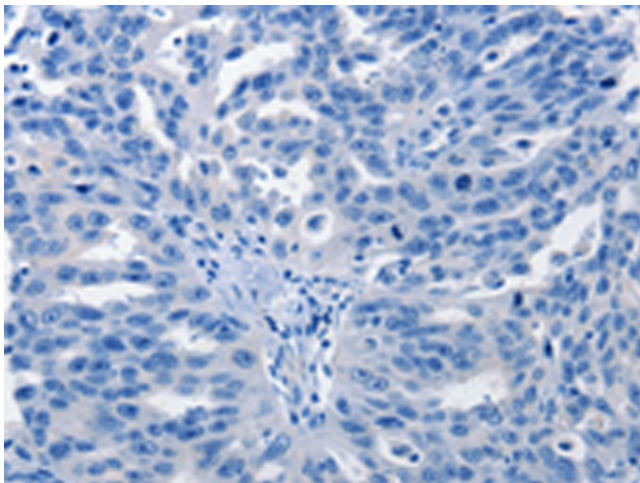
Immunohistochemistry of paraffin-embedded Human colon cancer tissue using [TA324187] (KLK7 Antibody) at dilution 1/10 (Original magnification:  $\times 200$ )



Immunohistochemistry of paraffin-embedded Human colon cancer tissue using [TA324187] (KLK7 Antibody) at dilution 1/10, treated with fusion protein. (Original magnification:  $\times 200$ )



Immunohistochemistry of paraffin-embedded Human ovarian cancer tissue using [TA324187] (KLK7 Antibody) at dilution 1/10 (Original magnification:  $\times 200$ )



Immunohistochemistry of paraffin-embedded Human ovarian cancer tissue using [TA324187] (KLK7 Antibody) at dilution 1/10, treated with fusion protein. (Original magnification:  $\times 200$ )