

## Product datasheet for **TA324185S**

### ABCB9 Rabbit Polyclonal Antibody

#### Product data:

Product Type:	Primary Antibodies
Applications:	IHC
Recommended Dilution:	IHC: 25-100 Positive control: Human colorectal cancer Predicted cell location: Cytoplasm
Reactivity:	Human
Host:	Rabbit
Isotype:	IgG
Clonality:	Polyclonal
Immunogen:	Synthetic peptide peptide corresponding to a region derived from 710-723 amino acids of human ABCB9, swissprot No.:Q9NP78-2.
Formulation:	PBS pH7.3, 0.05% NaN <sub>3</sub> , 50% glycerol
Purification:	Antigen affinity purification
Conjugation:	Unconjugated
Storage:	Store at -20°C as received.
Stability:	Stable for 12 months from date of receipt.
Gene Name:	ATP binding cassette subfamily B member 9
Database Link:	<a href="#">NP_982270</a> <a href="#">Entrez Gene 23457 Human</a> <a href="#">Q9NP78</a>
Background:	The membrane-associated protein encoded by this gene is a member of the superfamily of ATP-binding cassette (ABC) transporters. ABC proteins transport various molecules across extra- and intra-cellular membranes. ABC genes are divided into seven distinct subfamilies (ABC1; MDR/TAP; MRP; ALD; OABP; GCN20; White). This protein is a member of the MDR/TAP subfamily. Members of the MDR/TAP subfamily are involved in multidrug resistance as well as antigen presentation. This family member functions in the translocation of peptides from the cytosol into the lysosomal lumen. Alternative splicing of this gene results in distinct isoforms which are likely to have different substrate specificities.?



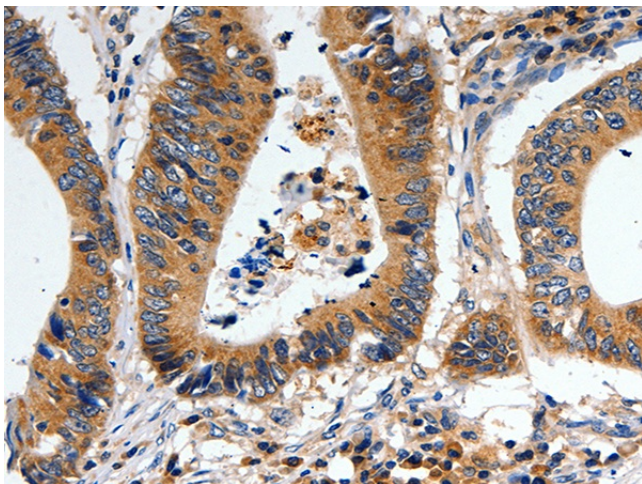
[View online »](#)

**Synonyms:** ATP-binding cassette; EST122234; KIAA1520; member 9; sub-family B (MDR; TAP); TAPL

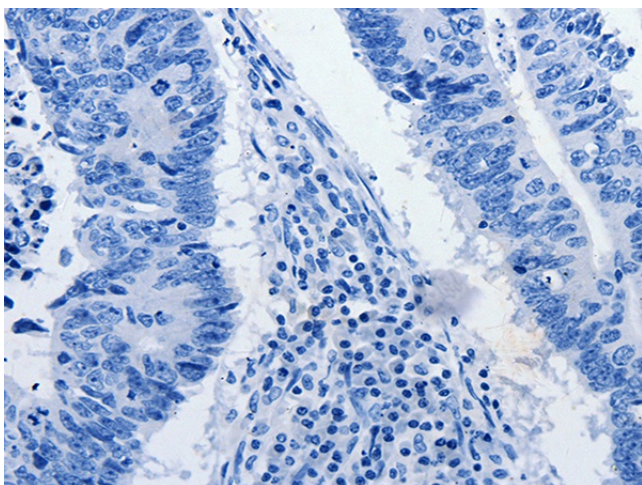
**Protein Families:** Druggable Genome, Transmembrane

**Protein Pathways:** ABC transporters, Lysosome

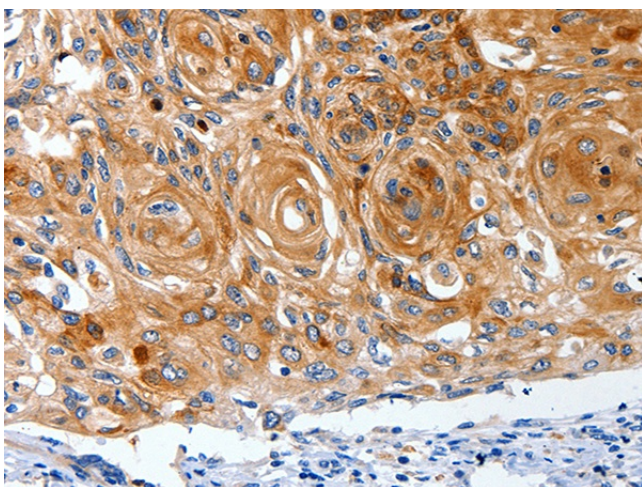
**Product images:**



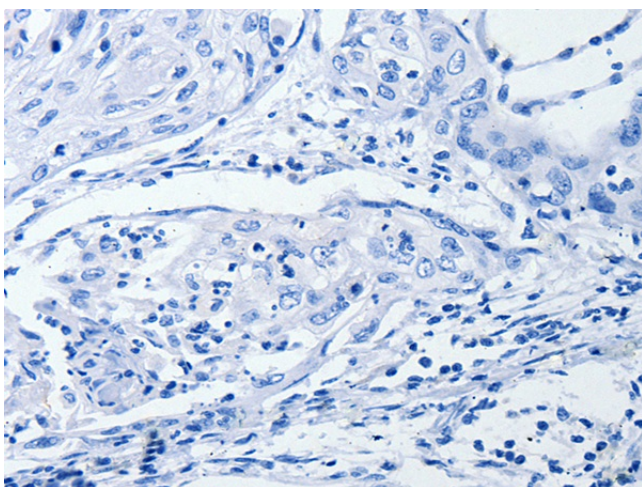
Immunohistochemistry of paraffin-embedded Human colorectal cancer tissue using [TA324185] (ABCB9 Antibody) at dilution 1/15 (Original magnification:  $\times 200$ )



Immunohistochemistry of paraffin-embedded Human colorectal cancer tissue using [TA324185] (ABCB9 Antibody) at dilution 1/15, treated with synthetic peptide. (Original magnification:  $\times 200$ )



Immunohistochemistry of paraffin-embedded Human cervical cancer tissue using [TA324185] (ABCB9 Antibody) at dilution 1/15 (Original magnification:  $\times 200$ )



Immunohistochemistry of paraffin-embedded Human cervical cancer tissue using [TA324185] (ABCB9 Antibody) at dilution 1/15, treated with synthetic peptide. (Original magnification:  $\times 200$ )