

## Product datasheet for **TA324178S**

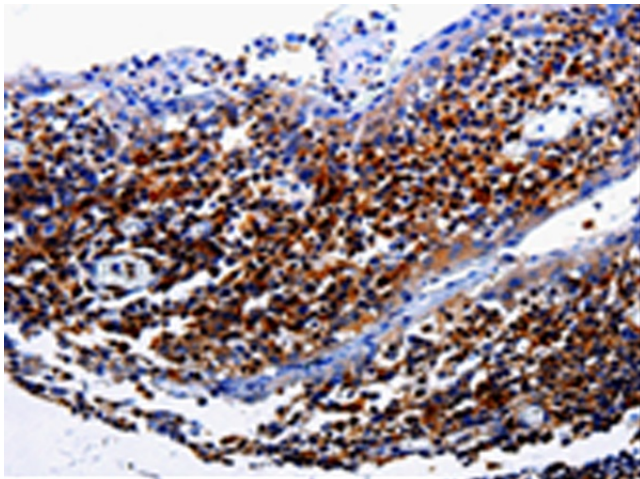
### IL31RA Rabbit Polyclonal Antibody

#### Product data:

Product Type:	Primary Antibodies
Applications:	IHC
Recommended Dilution:	IHC: 25-100 Positive control: Human tonsil Predicted cell location: Cell membrane
Reactivity:	Human
Host:	Rabbit
Isotype:	IgG
Clonality:	Polyclonal
Immunogen:	Fusion protein corresponding to a region derived from 21-319 amino acids of Human Interleukin-31 receptor subunit alpha
Formulation:	PBS pH7.3, 0.05% NaN <sub>3</sub> , 50% glycerol
Purification:	Antigen affinity purification
Conjugation:	Unconjugated
Storage:	Store at -20°C as received.
Stability:	Stable for 12 months from date of receipt.
Gene Name:	interleukin 31 receptor A
Database Link:	<a href="#">NP_620586</a> <a href="#">Entrez Gene 133396 Human</a> <a href="#">Q8NI17</a>
Background:	The protein encoded by this gene belongs to the type I cytokine receptor family. This receptor; with homology to gp130; is expressed on monocytes; and is involved in IL-31 signaling via activation of STAT-3 and STAT-5. It functions either as a monomer; or as part of a receptor complex with oncostatin M receptor (OSMR). Several alternatively spliced transcript variants encoding different isoforms have been noted for this gene.
Synonyms:	CRL; CRL3; GLM-R; GLMR; GPL; hGLM-R; IL-31RA; PLCA2; PRO21384
Protein Families:	Druggable Genome, Transmembrane



[View online »](#)

**Product images:**

Immunohistochemistry of paraffin-embedded Human tonsil tissue using [TA324178] (IL31RA Antibody) at dilution 1/40 (Original magnification: ×200)



Immunohistochemistry of paraffin-embedded Human tonsil tissue using [TA324178] (IL31RA Antibody) at dilution 1/40, treated with fusion protein. (Original magnification: ×200)