

Product datasheet for **TA324173**

PKC theta (PRKCQ) Rabbit Polyclonal Antibody

Product data:

| | |
|-------------------------|--|
| Product Type: | Primary Antibodies |
| Applications: | IF, IHC, WB |
| Recommended Dilution: | WB: 1:500-1000, IHC: 1:50-100, IF: 1:100-200 |
| Reactivity: | Human, Mouse, Rat |
| Modifications: | Phospho-specific |
| Host: | Rabbit |
| Isotype: | IgG |
| Clonality: | Polyclonal |
| Immunogen: | Peptide sequence around phosphorylation site of serine 676 (R-L-S(p)-F-A) derived from Human PKC? |
| Formulation: | PBS pH7.3, 0.05% NaN ₃ , 50% glycerol |
| Concentration: | lot specific |
| Purification: | Antigen affinity purification |
| Conjugation: | Unconjugated |
| Storage: | Store at -20°C as received. |
| Stability: | Stable for 12 months from date of receipt. |
| Predicted Protein Size: | 82 kDa |
| Gene Name: | protein kinase C theta |
| Database Link: | NP_006248 Entrez Gene 18761 Mouse Entrez Gene 85420 Rat Entrez Gene 5588 Human Q04759 |
| Background: | This is a calcium-independent, phospholipid-dependent, serine- and threonine-specific enzyme. Essential for T-cell receptor (TCR)-mediated T-cell activation, but is dispensable during TCR-dependent thymocyte development. Links the TCR signaling complex to the activation of NF-kappa-B in mature T lymphocytes. Required for interleukin-2 (IL2) production. |
| Synonyms: | nPKC-theta; PRKCT |

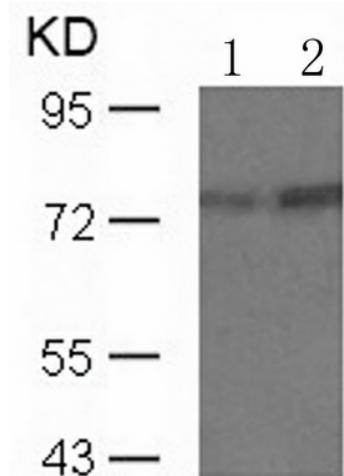


[View online »](#)

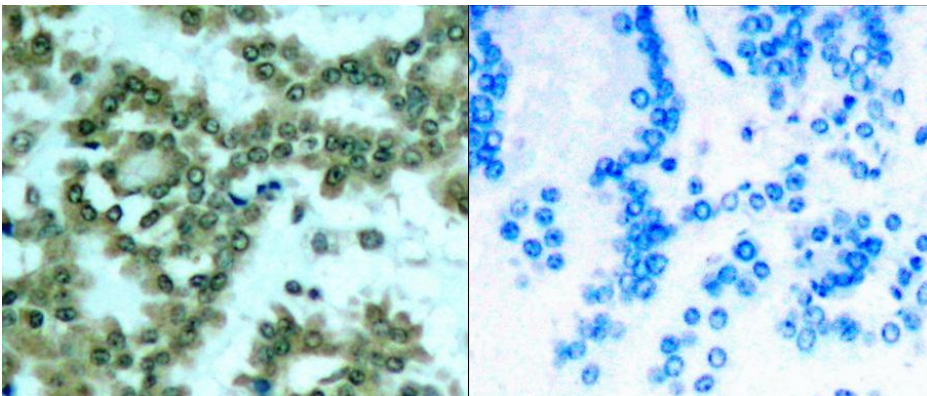
Protein Families: Druggable Genome, Protein Kinase, Transcription Factors

Protein Pathways: Adipocytokine signaling pathway, T cell receptor signaling pathway, Tight junction, Vascular smooth muscle contraction

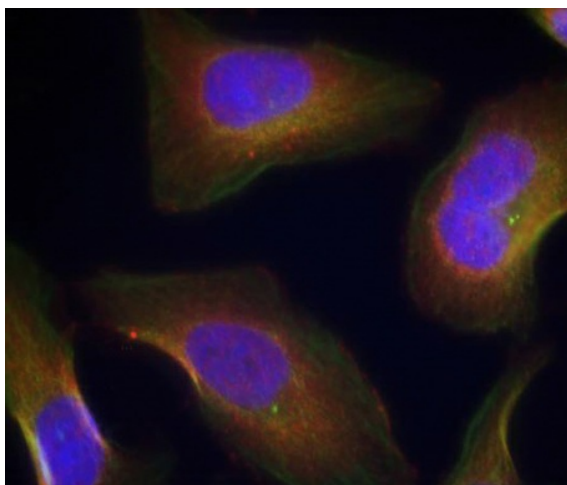
Product images:



Predicted band size: 82 kDa. Positive control: PC12 cells untreated or treated with PMA lysate. Recommended dilution: 1/ 500-1000. (Gel: 8%SDS-PAGE Lane 1: PC12 cells untreated with PMA lysate Lane 2: PC12 cells treated with PMA lysate Lysates: 30 ug per lane Primary antibody: 1/500 dilution Secondary antibody: Goat anti Rabbit IgG - H&L (HRP) at 1/10000 dilution Exposure time: 1 minute)



Predicted cell location: Cytoplasm; Cell membrane. Positive control: Human lung carcinoma tissue. Recommended dilution: 1/ 50-100 The image on the left is immunohistochemistry of paraffin-embedded human lung carcinoma tissue using PRKCQ (Phospho-Ser676) antibody at dilution 1/50, on the right is treated with the synthetic peptide. (Original magnification: x200)



Predicted cell location: Cytoplasm; Cell membrane. Positive control: HeLa cells. Recommended dilution: 1/ 100-200. The image is immunofluorescence of methanol-fixed HeLa cells using PRKCQ (Phospho-Ser676) antibody at dilution 1/100. (Original magnification: ×200)