

Product datasheet for **TA324171**

Caspase 2 (CASP2) Rabbit Polyclonal Antibody

Product data:

Product Type:	Primary Antibodies
Applications:	IHC, WB
Recommended Dilution:	WB: 1000-2000 WB positive control: Human fetal kidney and lung tissue IHC: 100-300 Positive control: Human urinary bladder Predicted cell location: Cytoplasm
Reactivity:	Human, Mouse, Rat
Host:	Rabbit
Isotype:	IgG
Clonality:	Polyclonal
Immunogen:	Fusion protein corresponding to N terminal 201 amino acids of Human Caspase-2
Formulation:	PBS pH7.3, 0.05% NaN ₃ , 50% glycerol
Concentration:	lot specific
Purification:	Antigen affinity purification
Conjugation:	Unconjugated
Storage:	Store at -20°C as received.
Stability:	Stable for 12 months from date of receipt.
Predicted Protein Size:	51 kDa
Gene Name:	caspase 2
Database Link:	NP_001215 Entrez Gene 12366 Mouse Entrez Gene 64314 Rat Entrez Gene 835 Human P42575



[View online »](#)

Background:

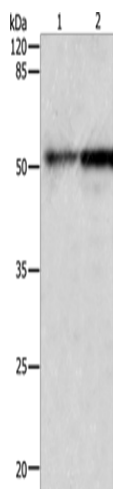
This gene encodes a member of the cysteine-aspartic acid protease (caspase) family. Caspases mediate cellular apoptosis through the proteolytic cleavage of specific protein substrates. The encoded protein may function in stress-induced cell death pathways; cell cycle maintenance; and the suppression of tumorigenesis. Increased expression of this gene may play a role in neurodegenerative disorders including Alzheimer's disease; Huntington's disease and temporal lobe epilepsy. Alternatively spliced transcript variants encoding multiple isoforms have been observed for this gene.

Synonyms:

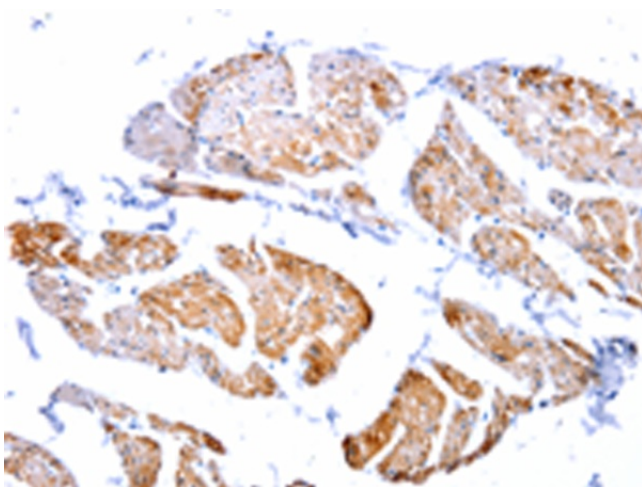
CASP-2; ICH1; NEDD-2; NEDD2; PPP1R57

Protein Families:

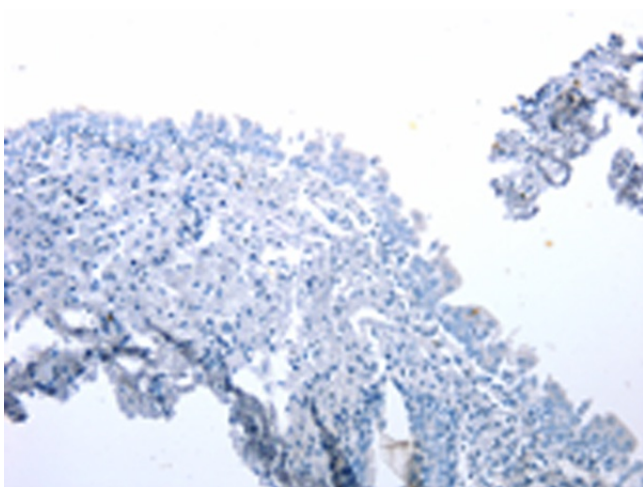
Druggable Genome, Protease

Product images:

Gel: 10%SDS-PAGE
Lysate: 30 µg
Lane 1-2: Human fetal kidney tissue
Human lung tissue
Primary antibody: TA324171 (CASP2 Antibody) at dilution 1/950
Secondary antibody: Goat anti rabbit IgG at 1/8000 dilution
Exposure time: 2 minutes



Immunohistochemistry of paraffin-embedded Human urinary bladder tissue using TA324171 (CASP2 Antibody) at dilution 1/100 (Original magnification: ×200)



Immunohistochemistry of paraffin-embedded Human urinary bladder tissue using TA324171 (CASP2 Antibody) at dilution 1/100, treated with fusion protein. (Original magnification: ×200)