

Product datasheet for **TA324170**

Caspase 2 (CASP2) Rabbit Polyclonal Antibody

Product data:

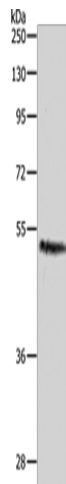
Product Type:	Primary Antibodies
Applications:	WB
Recommended Dilution:	WB: 1000-5000 WB positive control: Hela cells
Reactivity:	Human, Mouse, Rat
Host:	Rabbit
Isotype:	IgG
Clonality:	Polyclonal
Immunogen:	Fusion protein corresponding to N terminal 201 amino acids of Human Caspase-2
Formulation:	PBS pH7.3, 0.05% NaN ₃ , 50% glycerol
Concentration:	lot specific
Purification:	Antigen affinity purification
Conjugation:	Unconjugated
Storage:	Store at -20°C as received.
Stability:	Stable for 12 months from date of receipt.
Predicted Protein Size:	51 kDa
Gene Name:	caspase 2
Database Link:	NP_001215 Entrez Gene 12366 MouseEntrez Gene 64314 RatEntrez Gene 835 Human P42575
Background:	This gene encodes a member of the cysteine-aspartic acid protease (caspase) family. Caspases mediate cellular apoptosis through the proteolytic cleavage of specific protein substrates. The encoded protein may function in stress-induced cell death pathways; cell cycle maintenance; and the suppression of tumorigenesis. Increased expression of this gene may play a role in neurodegenerative disorders including Alzheimer's disease; Huntington's disease and temporal lobe epilepsy. Alternatively spliced transcript variants encoding multiple isoforms have been observed for this gene.
Synonyms:	CASP-2; ICH1; NEDD-2; NEDD2; PPP1R57



[View online »](#)

Protein Families: Druggable Genome, Protease

Product images:



Gel: 8%SDS-PAGE

Lysate: 40 μ g

Lane: HeLa cells

Primary antibody: TA324170 (CASP2 Antibody) at dilution 1/1000

Secondary antibody: Goat anti rabbit IgG at 1/8000 dilution

Exposure time: 1 minute