

Product datasheet for **TA324168**

BACE1 Rabbit Polyclonal Antibody

Product data:

Product Type:	Primary Antibodies
Applications:	IHC, WB
Recommended Dilution:	WB: 500-2000 WB positive control: Mouse Pancreas tissue lysate IHC: 50-200 Positive control: Human cervical cancer Predicted cell location: Cytoplasm
Reactivity:	Human, Mouse, Rat
Host:	Rabbit
Isotype:	IgG
Clonality:	Polyclonal
Immunogen:	Fusion protein corresponding to C terminal 300 amino acids of human beta-site APP-cleaving enzyme 1
Formulation:	PBS pH7.3, 0.05% NaN ₃ , 50% glycerol
Concentration:	lot specific
Purification:	Antigen affinity purification
Conjugation:	Unconjugated
Storage:	Store at -20°C as received.
Stability:	Stable for 12 months from date of receipt.
Gene Name:	beta-secretase 1
Database Link:	NP_620429 Entrez Gene 23821 Mouse Entrez Gene 29392 Rat Entrez Gene 23621 Human P56817



[View online »](#)

Background:

Cerebral deposition of amyloid beta peptide is an early and critical feature of Alzheimer's disease. Amyloid beta peptide is generated by proteolytic cleavage of amyloid precursor protein (APP) by two proteases, one of which is the protein encoded by this gene. The encoded protein, a member of the peptidase A1 protein family, is a type I integral membrane glycoprotein and aspartic protease that is found mainly in the Golgi. Multiple transcript variants encoding different isoforms have been described for this gene.?

Synonyms:

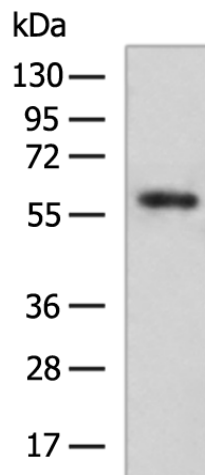
ASP2; BACE; HSPC104

Protein Families:

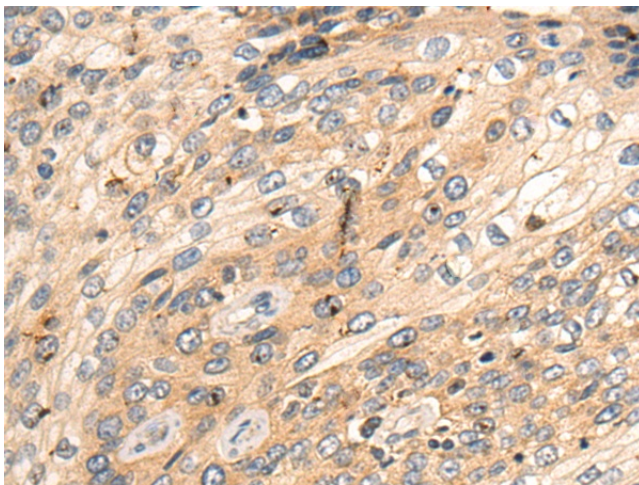
Druggable Genome, Protease, Transmembrane

Protein Pathways:

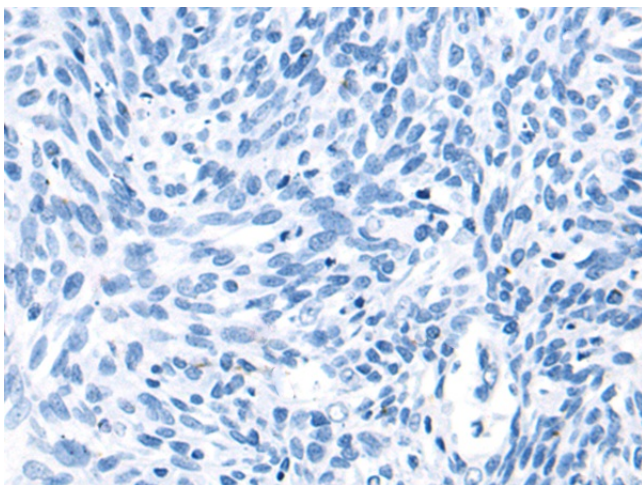
Alzheimer's disease

Product images:


Gel: 8%SDS-PAGE
 Lysate: 40 µg
 Lane: Mouse Pancreas tissue lysate
 Primary antibody: TA324168 (BACE1 Antibody) at dilution 1/300
 Secondary antibody: Goat anti rabbit IgG at 1/5000 dilution
 Exposure time: 5 minutes



Immunohistochemistry of paraffin-embedded Human cervical cancer tissue using TA324168 (BACE1 Antibody) at dilution 1/50 (Original magnification: ×200)



Immunohistochemistry of paraffin-embedded Human cervical cancer tissue using TA324168 (BACE1 Antibody) at dilution 1/50, treated with fusion protein. (Original magnification: ×200)