

## Product datasheet for **TA324166**

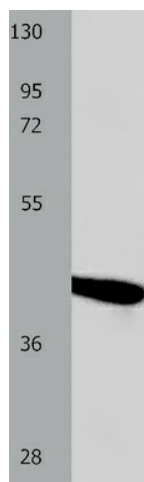
### Oct-2 (POU2F2) Rabbit Polyclonal Antibody

#### Product data:

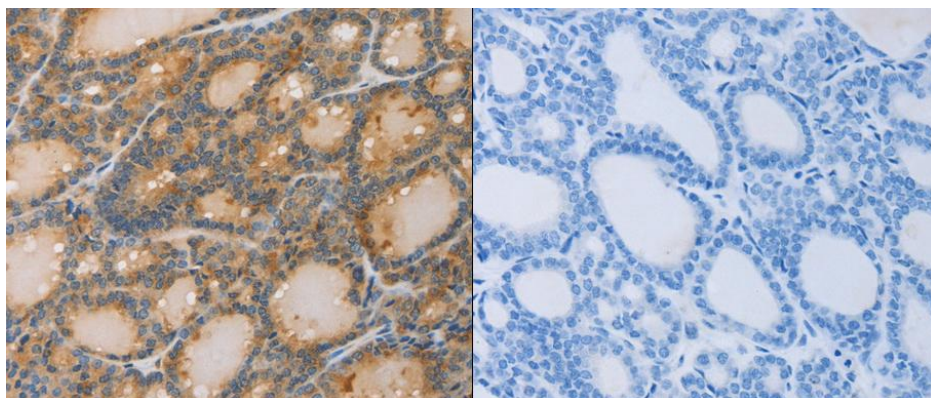
Product Type:	Primary Antibodies
Applications:	IHC, WB
Recommended Dilution:	ELISA: 1:1000-5000, WB: 1:1000-5000, IHC: 1:50-200
Reactivity:	Human, Mouse, Rat
Host:	Rabbit
Isotype:	IgG
Clonality:	Polyclonal
Immunogen:	Fusion protein corresponding to N terminal 200 amino acids of human POU class 2 homeobox 2
Formulation:	PBS pH7.3, 0.05% NaN <sub>3</sub> , 50% glycerol
Concentration:	lot specific
Purification:	Antigen affinity purification
Conjugation:	Unconjugated
Storage:	Store at -20°C as received.
Stability:	Stable for 12 months from date of receipt.
Predicted Protein Size:	49 kDa
Gene Name:	POU class 2 homeobox 2
Database Link:	<a href="#">NP_001193954</a> <a href="#">Entrez Gene 18987 MouseEntrez Gene 117058 RatEntrez Gene 5452 Human P09086</a>
Background:	The protein encoded by this gene is a homeobox-containing transcription factor of the POU domain family. The encoded protein binds the octamer sequence 5'-ATTGTCAT-3'; a common transcription factor binding site in immunoglobulin gene promoters. Several transcript variants encoding different isoforms have been found for this gene.
Synonyms:	Oct-2; OCT2; OTF2
Protein Families:	Transcription Factors



[View online »](#)

**Product images:**

Predicted band size: 49 kDa. Positive control: Human lymphoma tissue lysate. Recommended dilution: 1/1000-5000. (Gel: 10%SDS-PAGE Lysate: 40 ug Primary antibody: 1/1050 dilution Secondary antibody: Goat anti Rabbit IgG - H&L (HRP) at 1/10000 dilution Exposure time: 1 hour)



Predicted cell location: Cytoplasm. Positive control: Human thyroid cancer tissue. Recommended dilution: 1/50-200 The image on the left is immunohistochemistry of paraffin-embedded Human thyroid cancer tissue using POU2F2 antibody at dilution 1/80, on the right is treated with the fusion protein. (Original magnification: x200)