

Product datasheet for **TA324163**

CNTF Receptor alpha (CNTFR) Rabbit Polyclonal Antibody

Product data:

Product Type:	Primary Antibodies
Applications:	IHC, WB
Recommended Dilution:	WB: 500-2000 WB positive control: HT29 and Hela cell lysate IHC: 100-300 Positive control: Human liver cancer Predicted cell location: Cytoplasm
Reactivity:	Human, Mouse, Rat
Host:	Rabbit
Isotype:	IgG
Clonality:	Polyclonal
Immunogen:	Fusion protein corresponding to a region derived from 23-342 amino acids of human ciliary neurotrophic factor receptor
Formulation:	PBS pH7.3, 0.05% NaN ₃ , 50% glycerol
Concentration:	lot specific
Purification:	Antigen affinity purification
Conjugation:	Unconjugated
Storage:	Store at -20°C as received.
Stability:	Stable for 12 months from date of receipt.
Predicted Protein Size:	41 kDa
Gene Name:	ciliary neurotrophic factor receptor
Database Link:	NP_001193940 Entrez Gene 12804 Mouse Entrez Gene 313173 Rat Entrez Gene 1271 Human P26992



[View online »](#)

Background:

This gene encodes a member of the type 1 cytokine receptor family. The encoded protein is the ligand-specific component of a tripartite receptor for ciliary neurotrophic factor; which plays a critical role in neuronal cell survival; differentiation and gene expression. Binding of ciliary neurotrophic factor to the encoded protein recruits the transmembrane components of the receptor; gp130 and leukemia inhibitory factor receptor; facilitating signal transduction. Single nucleotide polymorphisms in this gene may be associated with variations in muscle strength; as well as early onset of eating disorders. Alternatively spliced transcript variants have been observed for this gene.

Synonyms:

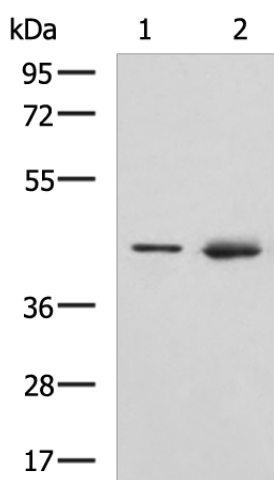
MGC1774

Protein Families:

Druggable Genome

Protein Pathways:

Cytokine-cytokine receptor interaction, Jak-STAT signaling pathway

Product images:

Gel: 8%SDS-PAGE

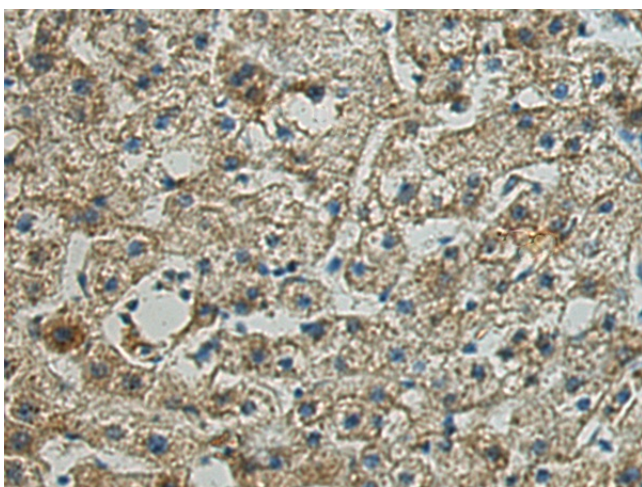
Lysate: 40 µg

Lane 1-2: HT29 and HeLa cell lysate

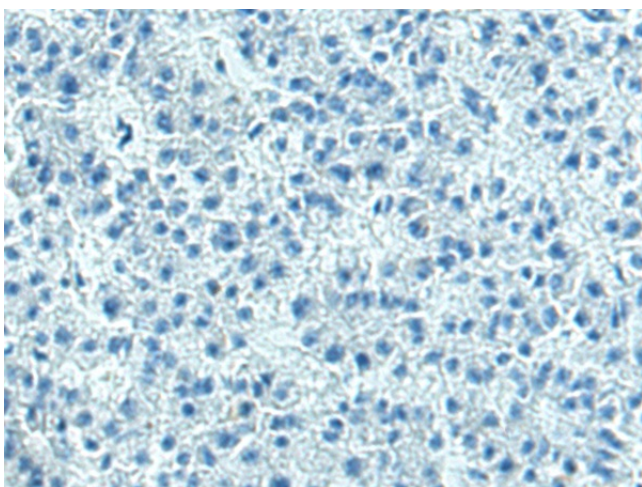
Primary antibody: TA324163 (CNTFR Antibody) at dilution 1/800

Secondary antibody: Goat anti rabbit IgG at 1/5000 dilution

Exposure time: 1 minute



Immunohistochemistry of paraffin-embedded Human liver cancer tissue using TA324163 (CNTFR Antibody) at dilution 1/130 (Original magnification: ×200)



Immunohistochemistry of paraffin-embedded Human liver cancer tissue using TA324163 (CNTFR Antibody) at dilution 1/130, treated with fusion protein. (Original magnification: $\times 200$)