

Product datasheet for **TA324162**

ALDH1A2 Rabbit Polyclonal Antibody

Product data:

Product Type:	Primary Antibodies
Applications:	IHC, WB
Recommended Dilution:	WB: 500-2000 WB positive control: K562 cells IHC: 25-100 Positive control: Human ovarian cancer Predicted cell location: Cytoplasm
Reactivity:	Human, Mouse, Rat
Host:	Rabbit
Isotype:	IgG
Clonality:	Polyclonal
Immunogen:	Synthetic peptide corresponding to a region derived from 5-19 amino acids of human aldehyde dehydrogenase 1 family, member A2
Formulation:	PBS pH7.3, 0.05% NaN ₃ , 50% glycerol
Concentration:	lot specific
Purification:	Antigen affinity purification
Conjugation:	Unconjugated
Storage:	Store at -20°C as received.
Stability:	Stable for 12 months from date of receipt.
Predicted Protein Size:	57 kDa
Gene Name:	aldehyde dehydrogenase 1 family member A2
Database Link:	NP_001193826 Entrez Gene 19378 Mouse Entrez Gene 116676 Rat Entrez Gene 8854 Human O94788



[View online »](#)

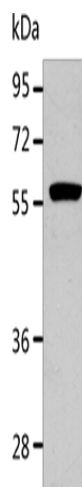
Background: This protein belongs to the aldehyde dehydrogenase family of proteins. The product of this gene is an enzyme that catalyzes the synthesis of retinoic acid (RA) from retinaldehyde. Retinoic acid, the active derivative of vitamin A (retinol), is a hormonal signaling molecule that functions in developing and adult tissues. The studies of a similar mouse gene suggest that this enzyme and the cytochrome CYP26A1, concurrently establish local embryonic retinoic acid levels which facilitate posterior organ development and prevent spina bifida. Four transcript variants encoding distinct isoforms have been identified for this gene.

Synonyms: RALDH(II); RALDH2; RALDH2-T

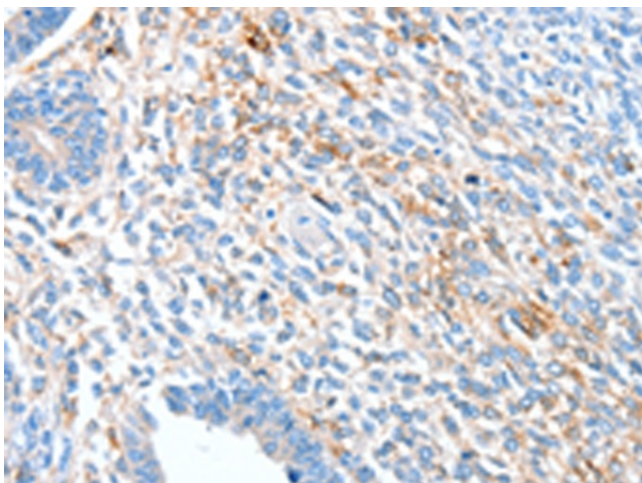
Protein Families: Druggable Genome

Protein Pathways: Metabolic pathways, Retinol metabolism

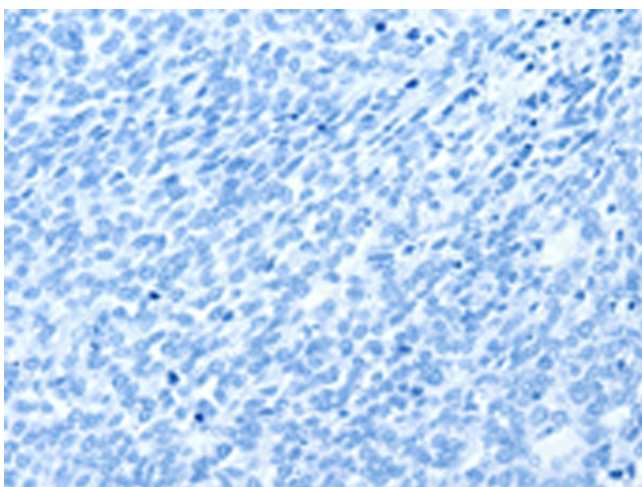
Product images:



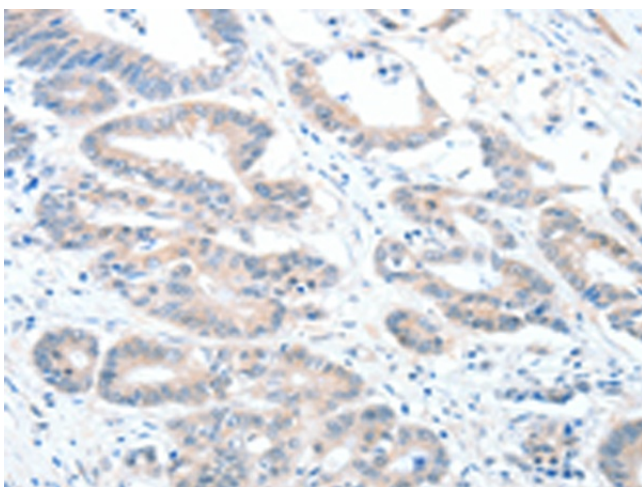
Gel: 10%SDS-PAGE
Lysate: 40 µg
Lane: K562 cells
Primary antibody: TA324162 (ALDH1A2 Antibody) at dilution 1/400
Secondary antibody: Goat anti rabbit IgG at 1/8000 dilution
Exposure time: 5 seconds



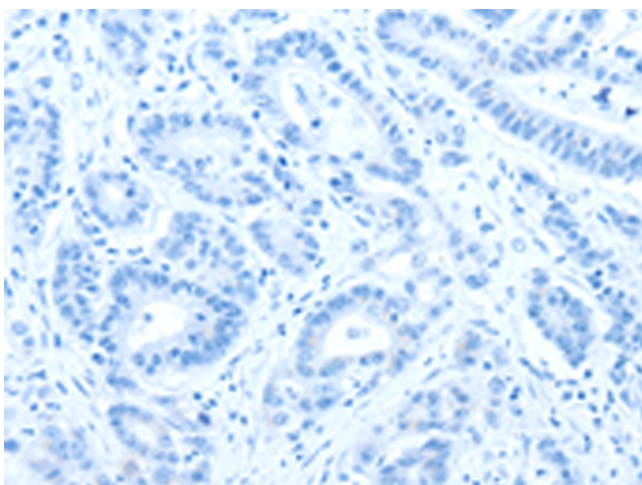
Immunohistochemistry of paraffin-embedded Human ovarian cancer tissue using TA324162 (ALDH1A2 Antibody) at dilution 1/60 (Original magnification: ×200)



Immunohistochemistry of paraffin-embedded Human ovarian cancer tissue using TA324162 (ALDH1A2 Antibody) at dilution 1/60, treated with synthetic peptide. (Original magnification: ×200)



Immunohistochemistry of paraffin-embedded Human colon cancer tissue using TA324162 (ALDH1A2 Antibody) at dilution 1/60 (Original magnification: ×200)



Immunohistochemistry of paraffin-embedded Human colon cancer tissue using TA324162 (ALDH1A2 Antibody) at dilution 1/60, treated with synthetic peptide. (Original magnification: ×200)