

Product datasheet for **TA324161**

ALDH1A2 Rabbit Polyclonal Antibody

Product data:

Product Type:	Primary Antibodies
Applications:	IHC
Recommended Dilution:	IHC: 50-200 Positive control: Human liver cancer Predicted cell location: Cytoplasm
Reactivity:	Human, Mouse, Rat
Host:	Rabbit
Isotype:	IgG
Clonality:	Polyclonal
Immunogen:	Synthetic peptide corresponding to a region derived from 5-19 amino acids of human aldehyde dehydrogenase 1 family, member A2
Formulation:	PBS pH7.3, 0.05% NaN ₃ , 50% glycerol
Concentration:	lot specific
Purification:	Antigen affinity purification
Conjugation:	Unconjugated
Storage:	Store at -20°C as received.
Stability:	Stable for 12 months from date of receipt.
Gene Name:	aldehyde dehydrogenase 1 family member A2
Database Link:	NP_733798 Entrez Gene 19378 MouseEntrez Gene 116676 RatEntrez Gene 8854 Human O94788

Background: This protein belongs to the aldehyde dehydrogenase family of proteins. The product of this gene is an enzyme that catalyzes the synthesis of retinoic acid (RA) from retinaldehyde. Retinoic acid, the active derivative of vitamin A (retinol), is a hormonal signaling molecule that functions in developing and adult tissues. The studies of a similar mouse gene suggest that this enzyme and the cytochrome CYP26A1, concurrently establish local embryonic retinoic acid levels which facilitate posterior organ development and prevent spina bifida. Four transcript variants encoding distinct isoforms have been identified for this gene.



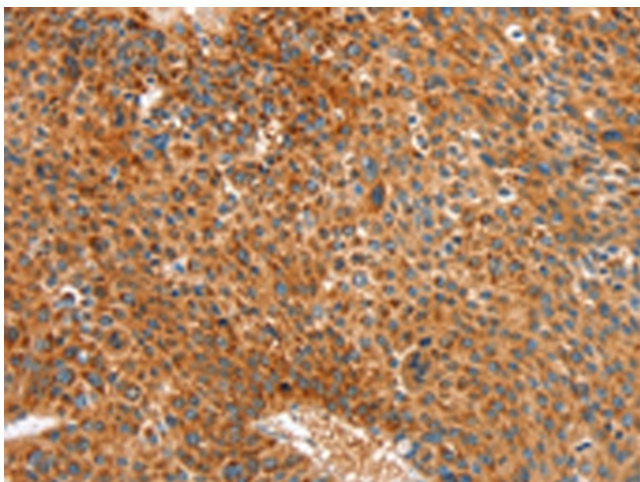
[View online »](#)

Synonyms: RALDH(II); RALDH2; RALDH2-T

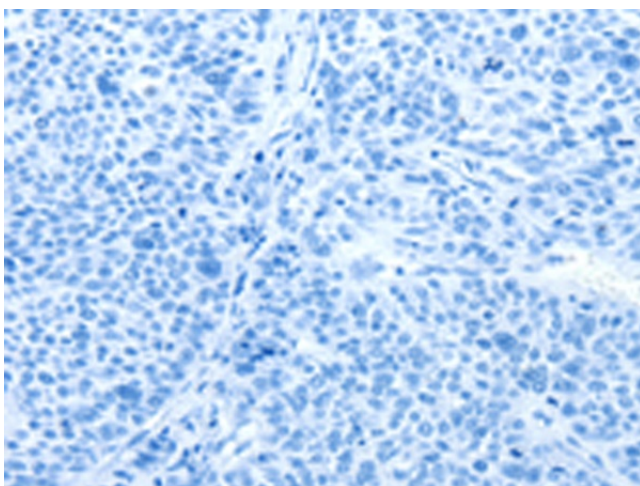
Protein Families: Druggable Genome

Protein Pathways: Metabolic pathways, Retinol metabolism

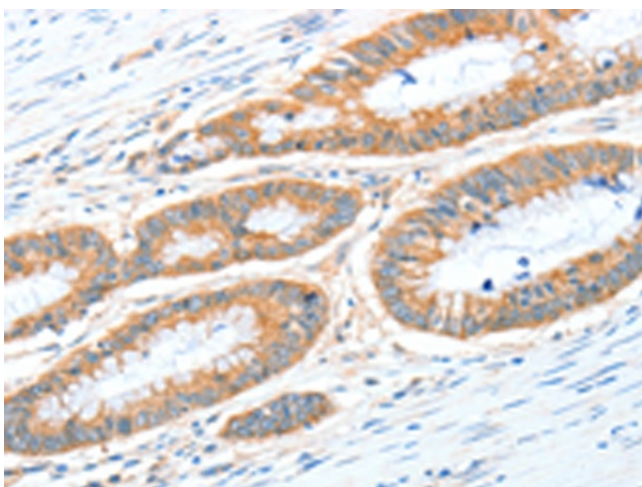
Product images:



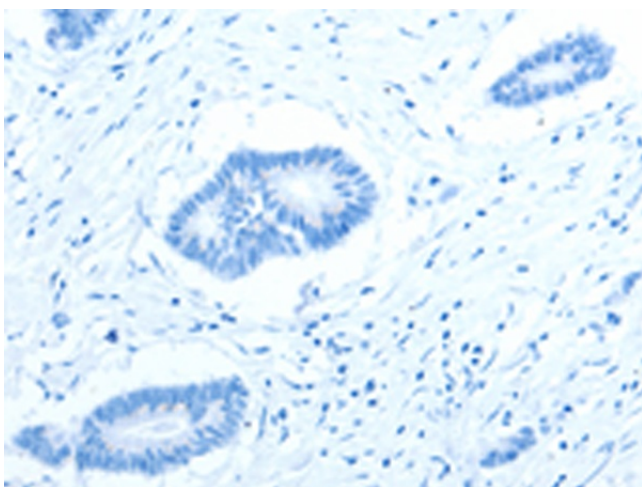
Immunohistochemistry of paraffin-embedded Human liver cancer tissue using TA324161 (ALDH1A2 Antibody) at dilution 1/30 (Original magnification: $\times 200$)



Immunohistochemistry of paraffin-embedded Human liver cancer tissue using TA324161 (ALDH1A2 Antibody) at dilution 1/30, treated with synthetic peptide. (Original magnification: $\times 200$)



Immunohistochemistry of paraffin-embedded Human colon cancer tissue using TA324161 (ALDH1A2 Antibody) at dilution 1/30 (Original magnification: $\times 200$)



Immunohistochemistry of paraffin-embedded Human colon cancer tissue using TA324161 (ALDH1A2 Antibody) at dilution 1/30, treated with synthetic peptide. (Original magnification: $\times 200$)