

## Product datasheet for **TA324160**

### ALS2CR2 (STRADB) Rabbit Polyclonal Antibody

#### Product data:

Product Type:	Primary Antibodies
Applications:	IHC, WB
Recommended Dilution:	WB: 200-1000 WB positive control: Mouse pancreas and spleen tissue, mouse heart tissue and 293T cells IHC: 25-100 Positive control: Human lymphoma Predicted cell location: Cytoplasm
Reactivity:	Human, Mouse
Host:	Rabbit
Isotype:	IgG
Clonality:	Polyclonal
Immunogen:	Fusion protein corresponding to a region derived from 139-378 amino acids of human STE20-related kinase adaptor beta
Formulation:	PBS pH7.3, 0.05% NaN <sub>3</sub> , 50% glycerol
Concentration:	lot specific
Purification:	Antigen affinity purification
Conjugation:	Unconjugated
Storage:	Store at -20°C as received.
Stability:	Stable for 12 months from date of receipt.
Gene Name:	STE20-related kinase adaptor beta
Database Link:	<a href="#">NP_001193793</a> <a href="#">Entrez Gene 227154 Mouse</a> <a href="#">Entrez Gene 55437 Human</a> <a href="#">Q9C0K7</a>



[View online »](#)

**Background:**

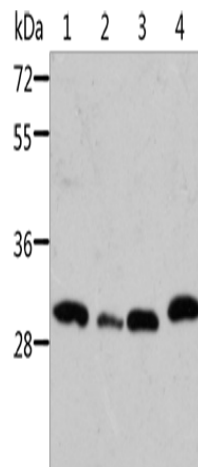
This gene encodes a protein that belongs to the serine/threonine protein kinase STE20 subfamily. One of the active site residues in the protein kinase domain of this protein is altered, and it is thus a pseudokinase. This protein is a component of a complex involved in the activation of serine/threonine kinase 11, a master kinase that regulates cell polarity and energy-generating metabolism. This complex regulates the relocation of this kinase from the nucleus to the cytoplasm, and it is essential for G1 cell cycle arrest mediated by this kinase. The protein encoded by this gene can also interact with the X chromosome-linked inhibitor of apoptosis protein, and this interaction enhances the anti-apoptotic activity of this protein via the JNK1 signal transduction pathway. Two pseudogenes, located on chromosomes 1 and 7, have been found for this gene. Alternatively spliced transcript variants encoding different isoforms have been found for this gene.

**Synonyms:**

ALS2CR2; CALS-21; ILPIP; ILPIPA; PAPK; PRO1038

**Protein Families:**

Druggable Genome, Protein Kinase

**Product images:**

Gel: 10%SDS-PAGE

Lysate: 40 µg

Lane 1-4: Mouse pancreas tissue

Mouse spleen tissue

mouse heart tissue

293T cells

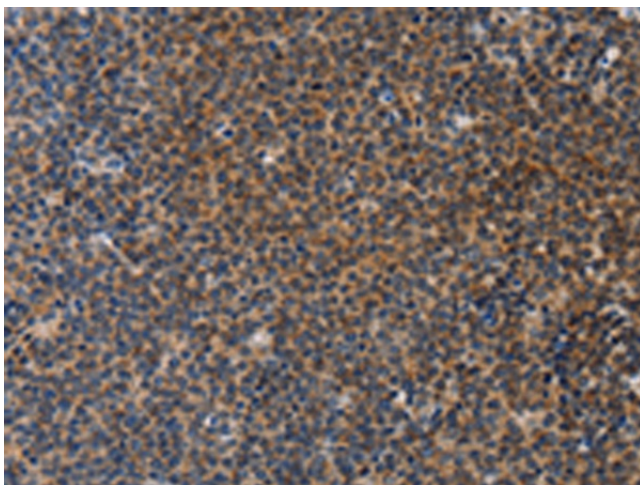
Primary antibody: TA324160 (STRADB Antibody)

at dilution 1/500

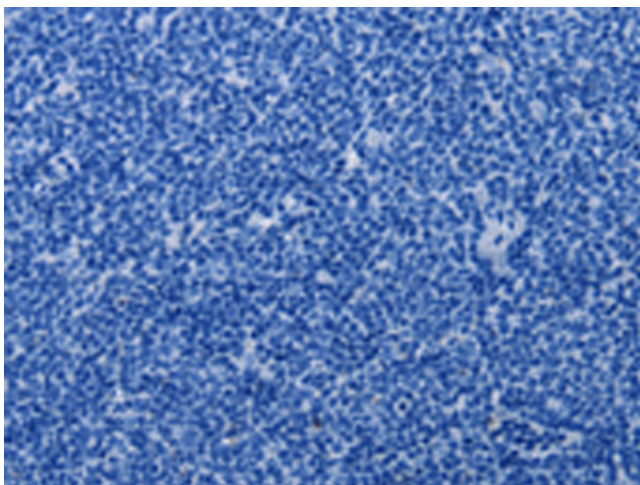
Secondary antibody: Goat anti rabbit IgG at

1/8000 dilution

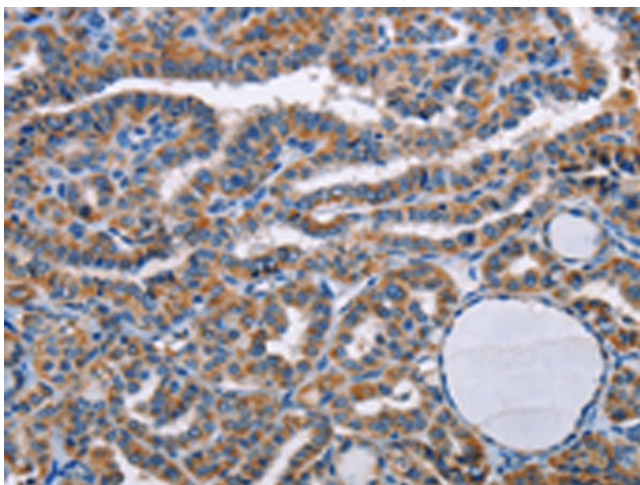
Exposure time: 10 minutes



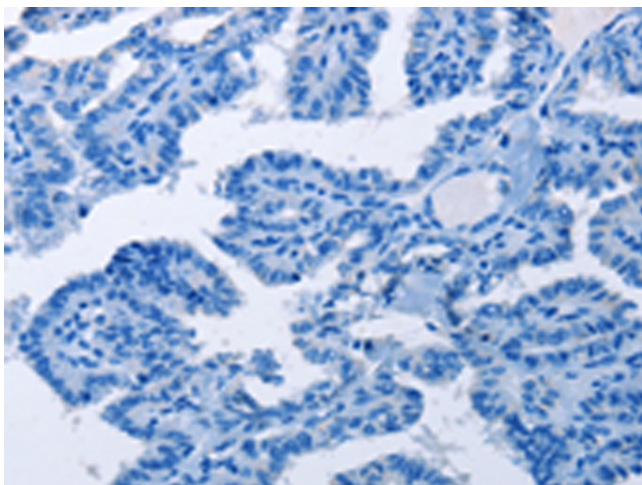
Immunohistochemistry of paraffin-embedded Human lymphoma tissue using TA324160 (STRADB Antibody) at dilution 1/20 (Original magnification: ×200)



Immunohistochemistry of paraffin-embedded Human lymphoma tissue using TA324160 (STRADB Antibody) at dilution 1/20, treated with fusion protein. (Original magnification: ×200)



Immunohistochemistry of paraffin-embedded Human thyroid cancer tissue using TA324160 (STRADB Antibody) at dilution 1/20 (Original magnification: ×200)



Immunohistochemistry of paraffin-embedded Human thyroid cancer tissue using TA324160 (STRADB Antibody) at dilution 1/20, treated with fusion protein. (Original magnification: ×200)