

Product datasheet for **TA324158**

RAB11A Rabbit Polyclonal Antibody

Product data:

Product Type:	Primary Antibodies
Applications:	WB
Recommended Dilution:	WB: 1:500-2000
Reactivity:	Human, Mouse, Rat
Host:	Rabbit
Isotype:	IgG
Clonality:	Polyclonal
Immunogen:	Full length fusion protein
Formulation:	PBS pH7.3, 0.05% NaN ₃ , 50% glycerol
Concentration:	lot specific
Purification:	Antigen affinity purification
Conjugation:	Unconjugated
Storage:	Store at -20°C as received.
Stability:	Stable for 12 months from date of receipt.
Predicted Protein Size:	24 kDa
Gene Name:	RAB11A, member RAS oncogene family
Database Link:	NP_001193765 Entrez Gene 53869 MouseEntrez Gene 81830 RatEntrez Gene 8766 Human P62491



[View online »](#)

Background:

Rab11a, Rab11b and Rab25 are members of the Rab11 family of small Ras-like GTPases. Rab11 (isoforms Rab11a and Rab11b) functions as a key regulator in the recycling of perinuclear, plasma membrane and Golgi compartment endosomes. Despite some overlap, distinct differences exist between Rab11a and Rab11b in both their cellular distribution and functional roles. Rab11a is ubiquitously expressed while Rab11b is found mainly in the heart and brain. Like other Rab proteins, Rab11 exerts its function via interactions with Rab11 family interacting proteins (FIPs). While there are three distinct classes of FIPs, all appear to share a conserved carboxy-terminal Rab-binding domain that allows Rab-FIP protein interaction. When bound together, these proteins are thought to regulate membrane-associated protein sorting.

Synonyms:

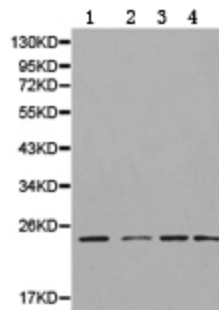
YL8

Protein Families:

Druggable Genome

Protein Pathways:

Endocytosis

Product images:

Predicted band size: 24 kDa. Positive control: Spleen tissue, Jurkat, MCF7 and SH-SY5Y cell lysate. Recommended dilution: 1/500-2000. (Gel: 10%SDS-PAGE Lane 1: Spleen tissue lysate Lane 2: Jurkat cell lysate Lane 3: MCF7 cell lysate Lane 4: SH-SY5Y cell lysate Lysates: 40 ug per lane Primary antibody: 1/500 dilution Secondary antibody: Goat anti Rabbit IgG - H&L (HRP) at 1/10000 dilution Exposure time: 1 minute)