

Product datasheet for **TA324157S**

MEK5 (MAP2K5) Rabbit Polyclonal Antibody

Product data:

Product Type:	Primary Antibodies
Applications:	IHC
Recommended Dilution:	IHC: 50-200 Positive control: Human colon cancer Predicted cell location: Cytoplasm
Reactivity:	Human, Mouse, Rat
Host:	Rabbit
Isotype:	IgG
Clonality:	Polyclonal
Immunogen:	Fusion protein corresponding to a region derived from 172-409 amino acids of human mitogen-activated protein kinase kinase 5
Formulation:	PBS pH7.3, 0.05% NaN ₃ , 50% glycerol
Purification:	Antigen affinity purification
Conjugation:	Unconjugated
Storage:	Store at -20°C as received.
Stability:	Stable for 12 months from date of receipt.
Gene Name:	mitogen-activated protein kinase kinase 5
Database Link:	NP_660145 Entrez Gene 23938 Mouse Entrez Gene 29568 Rat Entrez Gene 5607 Human Q13163

Background: The protein encoded by this gene is a dual specificity protein kinase that belongs to the MAP kinase kinase family. This kinase specifically interacts with and activates MAPK7/ERK5. This kinase itself can be phosphorylated and activated by MAP3K3/MEKK3; as well as by atypical protein kinase C isoforms (aPKCs). The signal cascade mediated by this kinase is involved in growth factor stimulated cell proliferation and muscle cell differentiation. Three alternatively spliced transcript variants of this gene encoding distinct isoforms have been described.



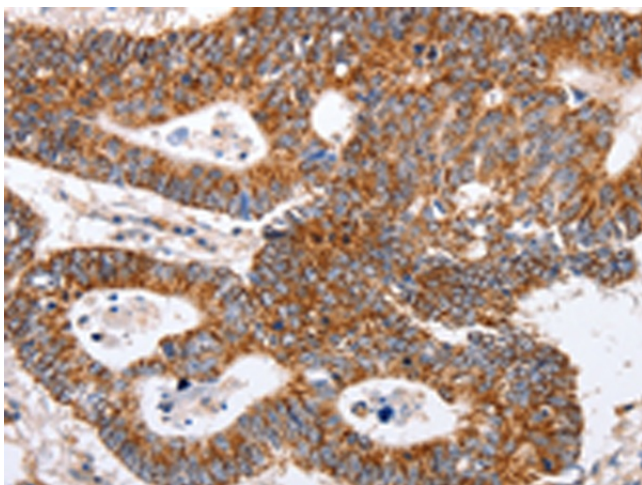
[View online »](#)

Synonyms: dual specificity mitogen-activated protein kinase kinase 5; ERK kinase 5; HsT17454; MAPK; MAP kinase kinase MEK5b; MAPKK5; MEK5; mitogen-activated protein kinase kinase 5; PRKMK5

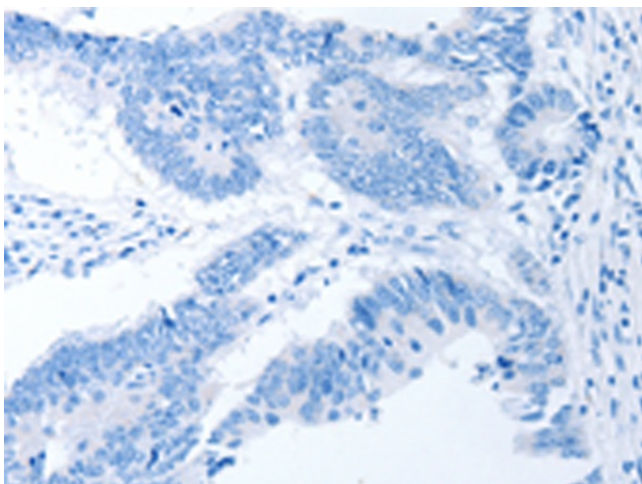
Protein Families: Druggable Genome, Protein Kinase

Protein Pathways: Gap junction, MAPK signaling pathway, Neurotrophin signaling pathway

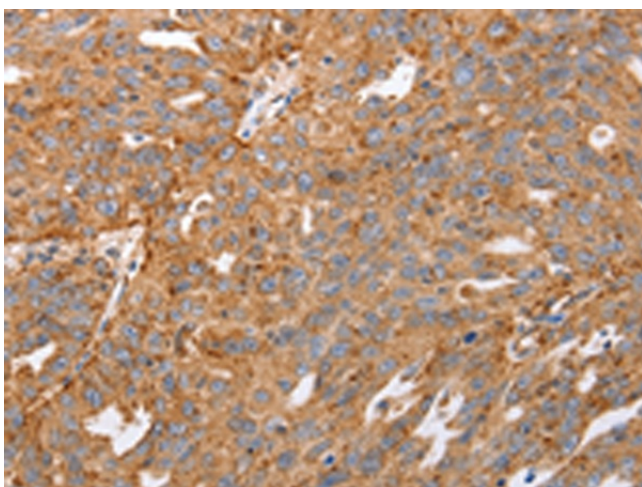
Product images:



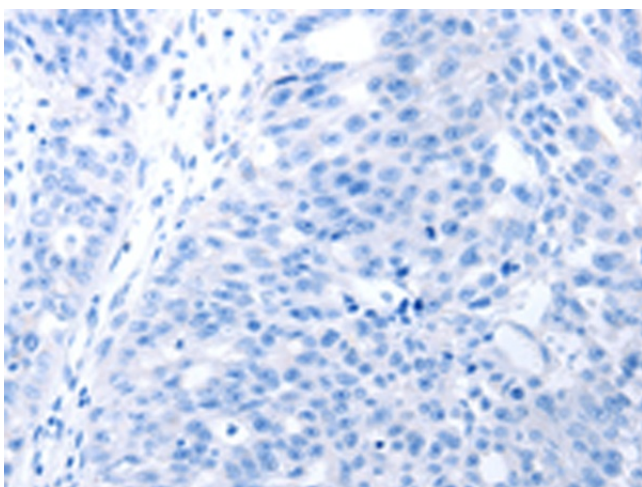
Immunohistochemistry of paraffin-embedded Human colon cancer tissue using [TA324157] (MAP2K5 Antibody) at dilution 1/40 (Original magnification: $\times 200$)



Immunohistochemistry of paraffin-embedded Human colon cancer tissue using [TA324157] (MAP2K5 Antibody) at dilution 1/40, treated with fusion protein. (Original magnification: $\times 200$)



Immunohistochemistry of paraffin-embedded Human ovarian cancer tissue using [TA324157] (MAP2K5 Antibody) at dilution 1/40 (Original magnification: $\times 200$)



Immunohistochemistry of paraffin-embedded Human ovarian cancer tissue using [TA324157] (MAP2K5 Antibody) at dilution 1/40, treated with fusion protein. (Original magnification: $\times 200$)