

Product datasheet for **TA324155**

ITGB3BP Rabbit Polyclonal Antibody

Product data:

Product Type:	Primary Antibodies
Applications:	IHC
Recommended Dilution:	IHC: 50-200 Positive control: Human gastric cancer Predicted cell location: Cytoplasm
Reactivity:	Human
Host:	Rabbit
Isotype:	IgG
Clonality:	Polyclonal
Immunogen:	Full length fusion protein
Formulation:	PBS pH7.3, 0.05% NaN ₃ , 50% glycerol
Concentration:	lot specific
Purification:	Antigen affinity purification
Conjugation:	Unconjugated
Storage:	Store at -20°C as received.
Stability:	Stable for 12 months from date of receipt.
Predicted Protein Size:	15 kDa
Gene Name:	integrin subunit beta 3 binding protein
Database Link:	NP_001193668 Entrez Gene 23421 Human Q13352



[View online »](#)

Background:

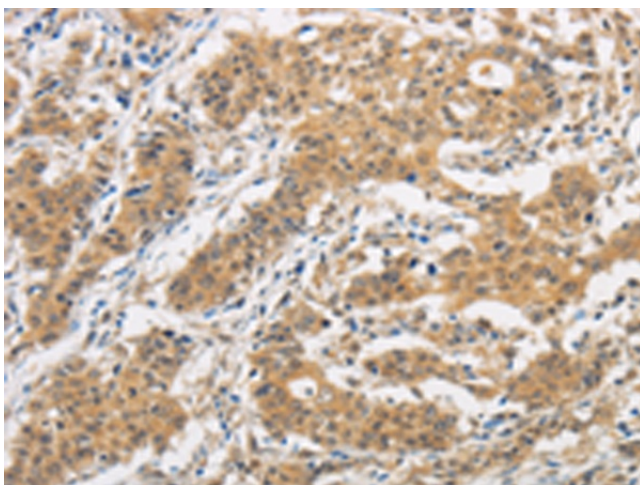
This gene encodes a transcriptional coregulator that binds to and enhances the activity of members of the nuclear receptor families; thyroid hormone receptors and retinoid X receptors. This protein also acts as a corepressor of NF-kappaB-dependent signaling. This protein induces apoptosis in breast cancer cells through a caspase 2-mediated signaling pathway. This protein is also a component of the centromere-specific histone H3 variant nucleosome associated complex (CENP-NAC) and may be involved in mitotic progression by recruiting the histone H3 variant CENP-A to the centromere. Alternate splicing results in multiple transcript variants.

Synonyms:

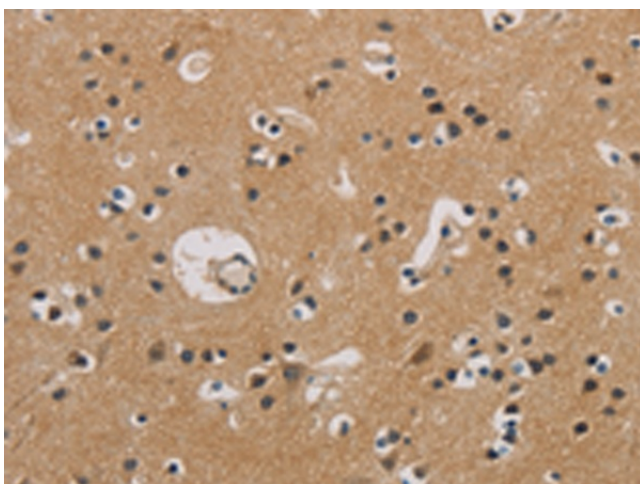
CENP-R; CENPR; HSU37139; NRIF3; TAP20

Protein Families:

Druggable Genome, Stem cell - Pluripotency, Transcription Factors

Product images:

Immunohistochemistry of paraffin-embedded Human gastric cancer tissue using TA324155 (ITGB3BP Antibody) at dilution 1/50. (Original magnification: x200)



Immunohistochemistry of paraffin-embedded Human brain tissue using TA324155 (ITGB3BP Antibody) at dilution 1/50. (Original magnification: x200)