

## Product datasheet for **TA324152**

### Caspase 10 (CASP10) Rabbit Polyclonal Antibody

#### Product data:

Product Type:	Primary Antibodies
Applications:	IHC
Recommended Dilution:	IHC: 25-100 Positive control: Human liver cancer Predicted cell location: Cytoplasm
Reactivity:	Human
Host:	Rabbit
Isotype:	IgG
Clonality:	Polyclonal
Immunogen:	Fusion protein corresponding to a region derived from 228-522 amino acids of human caspase 10, apoptosis-related cysteine peptidase
Formulation:	PBS pH7.3, 0.05% NaN <sub>3</sub> , 50% glycerol
Concentration:	lot specific
Purification:	Antigen affinity purification
Conjugation:	Unconjugated
Storage:	Store at -20°C as received.
Stability:	Stable for 12 months from date of receipt.
Gene Name:	caspase 10
Database Link:	<a href="#">NP_116759</a> <a href="#">Entrez Gene 843 Human</a> <a href="#">Q92851</a>



[View online »](#)

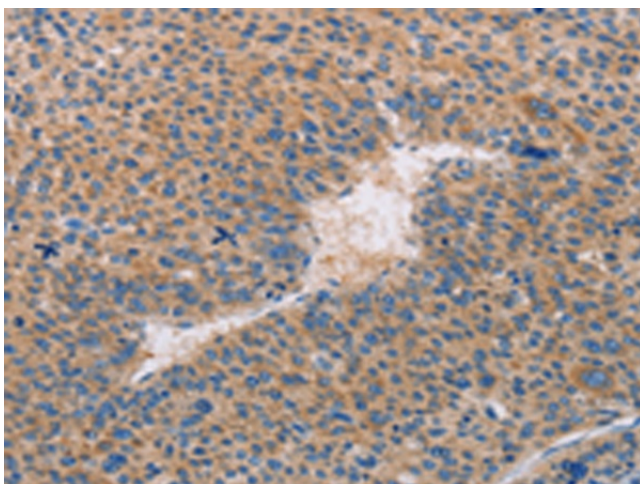
**Background:** This gene encodes a protein which is a member of the cysteine-aspartic acid protease (caspase) family. Sequential activation of caspases plays a central role in the execution-phase of cell apoptosis. Caspases exist as inactive proenzymes which undergo proteolytic processing at conserved aspartic residues to produce two subunits, large and small, that dimerize to form the active enzyme. This protein cleaves and activates caspases 3 and 7, and the protein itself is processed by caspase 8. Mutations in this gene are associated with type IIA autoimmune lymphoproliferative syndrome, non-Hodgkin lymphoma and gastric cancer. Alternatively spliced transcript variants encoding different isoforms have been described for this gene.

**Synonyms:** ALPS2; FLICE2; MCH4

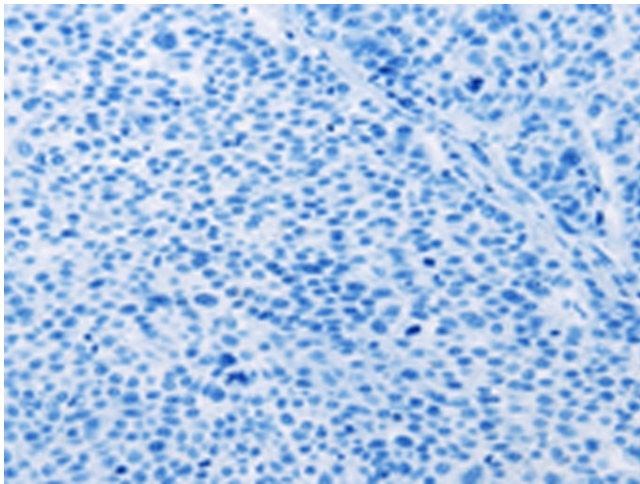
**Protein Families:** Druggable Genome, Protease

**Protein Pathways:** Apoptosis, RIG-I-like receptor signaling pathway

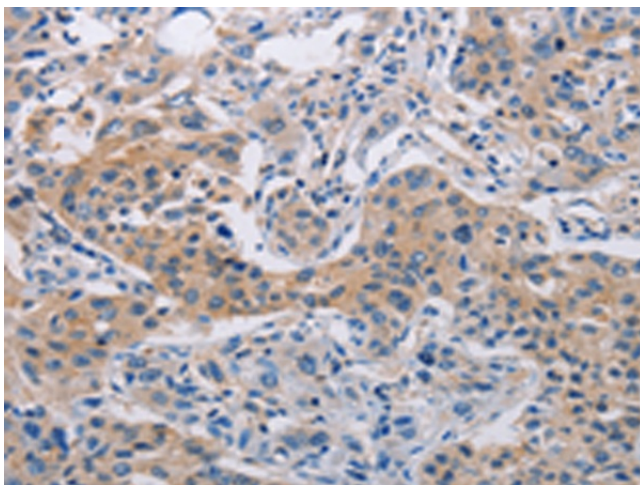
### Product images:



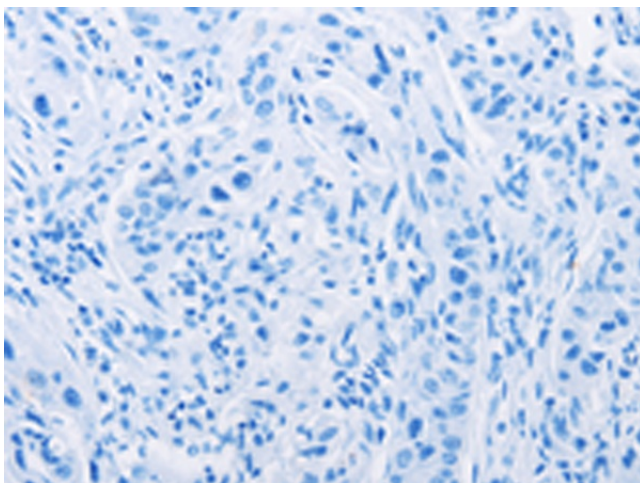
Immunohistochemistry of paraffin-embedded Human liver cancer tissue using TA324152 (CASP10 Antibody) at dilution 1/30 (Original magnification:  $\times 200$ )



Immunohistochemistry of paraffin-embedded Human liver cancer tissue using TA324152 (CASP10 Antibody) at dilution 1/30, treated with fusion protein. (Original magnification: ×200)



Immunohistochemistry of paraffin-embedded Human lung cancer tissue using TA324152 (CASP10 Antibody) at dilution 1/30 (Original magnification: ×200)



Immunohistochemistry of paraffin-embedded Human lung cancer tissue using TA324152 (CASP10 Antibody) at dilution 1/30, treated with fusion protein. (Original magnification: ×200)