

## Product datasheet for **TA324151**

### STEAP4 Rabbit Polyclonal Antibody

#### Product data:

Product Type:	Primary Antibodies
Applications:	IHC
Recommended Dilution:	IHC: 25-100 Positive control: Human cervical cancer Predicted cell location: Cytoplasm
Reactivity:	Human, Mouse
Host:	Rabbit
Isotype:	IgG
Clonality:	Polyclonal
Immunogen:	Synthetic peptide corresponding to a region derived from 441-456 amino acids of human STEAP family member 4
Formulation:	PBS pH7.3, 0.05% NaN <sub>3</sub> , 50% glycerol
Concentration:	lot specific
Purification:	Antigen affinity purification
Conjugation:	Unconjugated
Storage:	Store at -20°C as received.
Stability:	Stable for 12 months from date of receipt.
Gene Name:	STEAP4 metalloredutase
Database Link:	<a href="#">NP_078912</a> <a href="#">Entrez Gene 117167 Mouse</a> <a href="#">Entrez Gene 79689 Human</a> <a href="#">Q687X5</a>
Background:	The protein encoded by this gene belongs to the STEAP (six transmembrane epithelial antigen of prostate) family; and resides in the golgi apparatus. It functions as a metalloredutase that has the ability to reduce both Fe(3+) to Fe(2+) and Cu(2+) to Cu(1+); using NAD(+) as acceptor. Studies in mice and human suggest that this gene maybe involved in adipocyte development and metabolism; and may contribute to the normal biology of the prostate cell; as well as prostate cancer progression. Alternatively spliced transcript variants encoding different isoforms have been found for this gene.

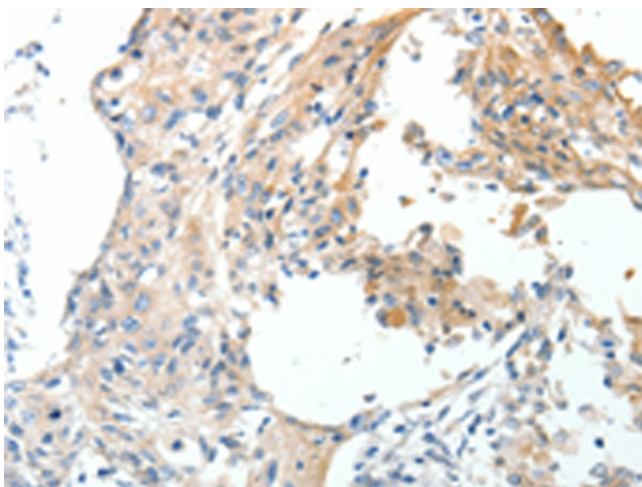


[View online »](#)

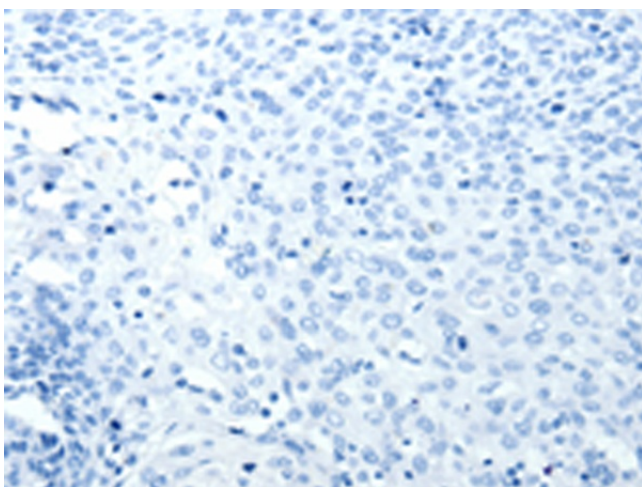
**Synonyms:** STAMP2; TIARP; TNFAIP9

**Protein Families:** Druggable Genome, Transmembrane

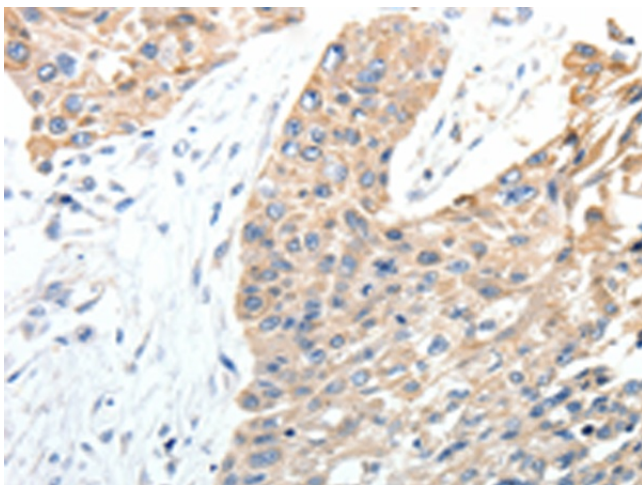
**Product images:**



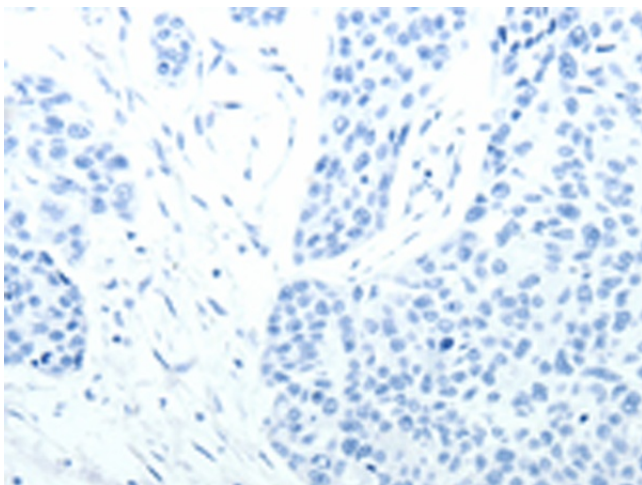
Immunohistochemistry of paraffin-embedded Human cervical cancer tissue using TA324151 (STEAP4 Antibody) at dilution 1/40 (Original magnification:  $\times 200$ )



Immunohistochemistry of paraffin-embedded Human cervical cancer tissue using TA324151 (STEAP4 Antibody) at dilution 1/40, treated with synthetic peptide. (Original magnification:  $\times 200$ )



Immunohistochemistry of paraffin-embedded Human esophagus cancer tissue using TA324151 (STEAP4 Antibody) at dilution 1/40 (Original magnification:  $\times 200$ )



Immunohistochemistry of paraffin-embedded Human esophagus cancer tissue using TA324151 (STEAP4 Antibody) at dilution 1/40, treated with synthetic peptide. (Original magnification:  $\times 200$ )