

## Product datasheet for **TA324150S**

### STEAP4 Rabbit Polyclonal Antibody

#### Product data:

Product Type:	Primary Antibodies
Applications:	IHC, WB
Recommended Dilution:	WB: 200-1000 WB positive control: HepG2 cell lysate IHC: 40-200 Positive control: Human liver cancer Predicted cell location: Cell membrane
Reactivity:	Human, Mouse
Host:	Rabbit
Isotype:	IgG
Clonality:	Polyclonal
Immunogen:	Synthetic peptide corresponding to a region derived from 441-456 amino acids of human STEAP family member 4
Formulation:	PBS pH7.3, 0.05% NaN <sub>3</sub> , 50% glycerol
Purification:	Antigen affinity purification
Conjugation:	Unconjugated
Storage:	Store at -20°C as received.
Stability:	Stable for 12 months from date of receipt.
Gene Name:	STEAP4 metalloredutase
Database Link:	<a href="#">NP_078912</a> <a href="#">Entrez Gene 117167 Mouse</a> <a href="#">Entrez Gene 79689 Human</a> <a href="#">Q687X5</a>
Background:	The protein encoded by this gene belongs to the STEAP (six transmembrane epithelial antigen of prostate) family; and resides in the golgi apparatus. It functions as a metalloredutase that has the ability to reduce both Fe(3+) to Fe(2+) and Cu(2+) to Cu(1+); using NAD(+) as acceptor. Studies in mice and human suggest that this gene maybe involved in adipocyte development and metabolism; and may contribute to the normal biology of the prostate cell; as well as prostate cancer progression. Alternatively spliced transcript variants encoding different isoforms have been found for this gene.

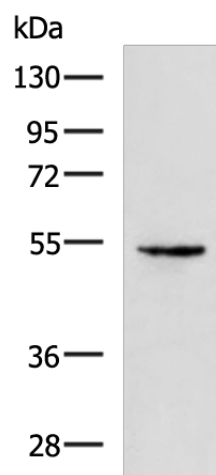


[View online »](#)

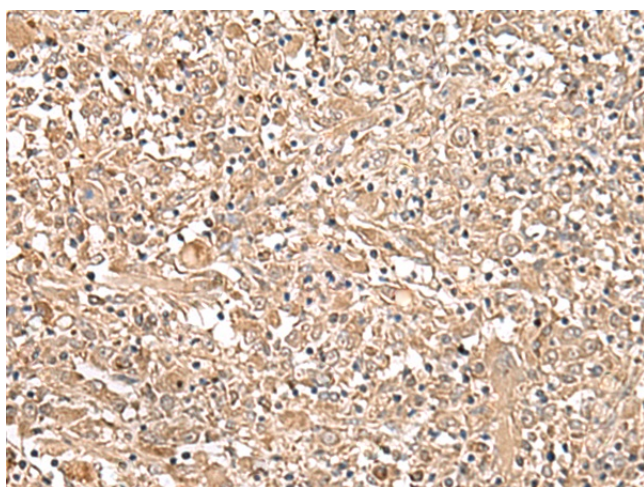
Synonyms: STAMP2; TIARP; TNFAIP9

Protein Families: Druggable Genome, Transmembrane

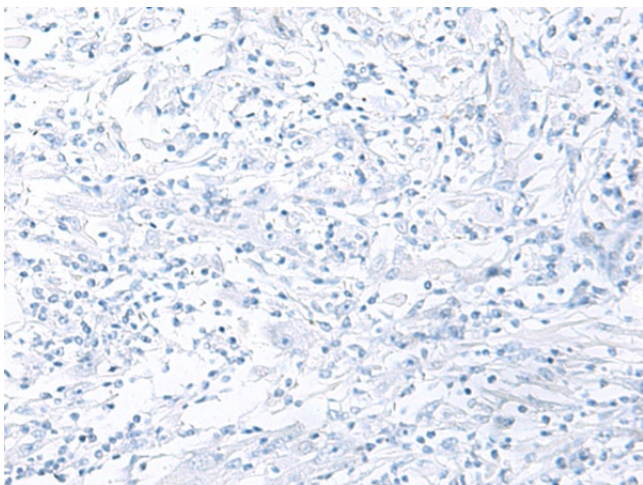
### Product images:



Gel: 8%SDS-PAGE  
Lysate: 40  $\mu$ g  
Lane: HepG2 cell lysate  
Primary antibody: [TA324150] (STEAP4 Antibody) at dilution 1/300  
Secondary antibody: Goat anti rabbit IgG at 1/5000 dilution  
Exposure time: 30 seconds



Immunohistochemistry of paraffin-embedded Human liver cancer tissue using [TA324150] (STEAP4 Antibody) at dilution 1/30 (Original magnification:  $\times$ 200)



Immunohistochemistry of paraffin-embedded Human liver cancer tissue using [TA324150] (STEAP4 Antibody) at dilution 1/30, treated with synthetic peptide. (Original magnification: ×200)