

Product datasheet for **TA324150**

STEAP4 Rabbit Polyclonal Antibody

Product data:

Product Type:	Primary Antibodies
Applications:	IHC, WB
Recommended Dilution:	WB: 200-1000 WB positive control: HepG2 cell lysate IHC: 40-200 Positive control: Human liver cancer Predicted cell location: Cell membrane
Reactivity:	Human, Mouse
Host:	Rabbit
Isotype:	IgG
Clonality:	Polyclonal
Immunogen:	Synthetic peptide corresponding to a region derived from 441-456 amino acids of human STEAP family member 4
Formulation:	PBS pH7.3, 0.05% NaN ₃ , 50% glycerol
Concentration:	lot specific
Purification:	Antigen affinity purification
Conjugation:	Unconjugated
Storage:	Store at -20°C as received.
Stability:	Stable for 12 months from date of receipt.
Gene Name:	STEAP4 metalloredutase
Database Link:	NP_078912 Entrez Gene 117167 Mouse Entrez Gene 79689 Human Q687X5



[View online »](#)

Background:

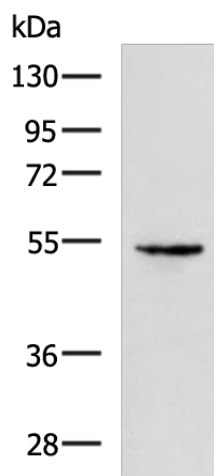
The protein encoded by this gene belongs to the STEAP (six transmembrane epithelial antigen of prostate) family; and resides in the golgi apparatus. It functions as a metalloreductase that has the ability to reduce both Fe(3+) to Fe(2+) and Cu(2+) to Cu(1+); using NAD(+) as acceptor. Studies in mice and human suggest that this gene maybe involved in adipocyte development and metabolism; and may contribute to the normal biology of the prostate cell; as well as prostate cancer progression. Alternatively spliced transcript variants encoding different isoforms have been found for this gene.

Synonyms:

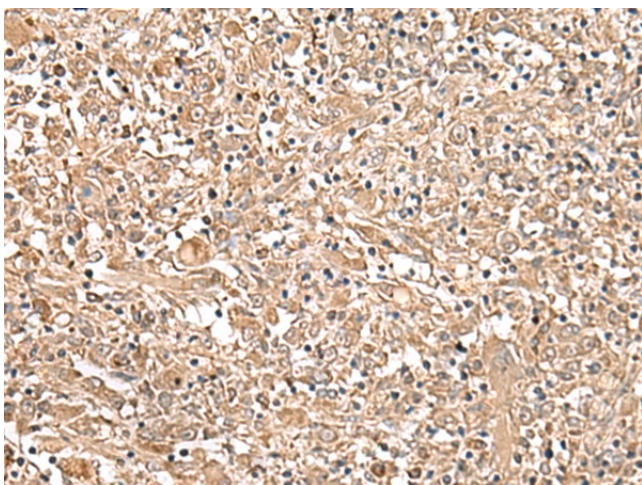
STAMP2; TIARP; TNFAIP9

Protein Families:

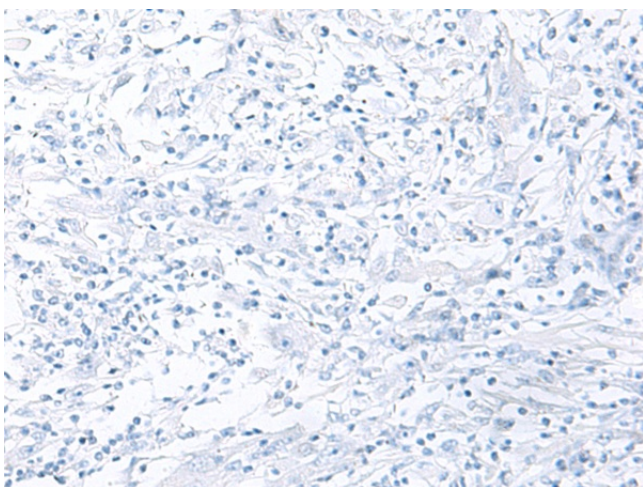
Druggable Genome, Transmembrane

Product images:

Gel: 8%SDS-PAGE
Lysate: 40 µg
Lane: HepG2 cell lysate
Primary antibody: TA324150 (STEAP4 Antibody) at dilution 1/300
Secondary antibody: Goat anti rabbit IgG at 1/5000 dilution
Exposure time: 30 seconds



Immunohistochemistry of paraffin-embedded Human liver cancer tissue using TA324150 (STEAP4 Antibody) at dilution 1/30 (Original magnification: ×200)



Immunohistochemistry of paraffin-embedded Human liver cancer tissue using TA324150 (STEAP4 Antibody) at dilution 1/30, treated with synthetic peptide. (Original magnification: ×200)