

## Product datasheet for **TA324148**

### Occludin (OCLN) Rabbit Polyclonal Antibody

#### Product data:

Product Type:	Primary Antibodies
Applications:	IHC, WB
Recommended Dilution:	WB: 200-1000 WB positive control: Human liver cancer tissue IHC: 15-50 Positive control: Human liver cancer Predicted cell location: Cytoplasm
Reactivity:	Human, Mouse, Rat
Host:	Rabbit
Isotype:	IgG
Clonality:	Polyclonal
Immunogen:	Fusion protein corresponding to a region derived from 266-522 amino acids of human occludin
Formulation:	PBS pH7.3, 0.05% NaN <sub>3</sub> , 50% glycerol
Concentration:	lot specific
Purification:	Antigen affinity purification
Conjugation:	Unconjugated
Storage:	Store at -20°C as received.
Stability:	Stable for 12 months from date of receipt.
Predicted Protein Size:	59 kDa
Gene Name:	occludin
Database Link:	<a href="#">NP_001192183</a> <a href="#">Entrez Gene 18260 Mouse</a> <a href="#">Entrez Gene 83497 Rat</a> <a href="#">Entrez Gene 100506658 Human</a> <a href="#">Q16625</a>



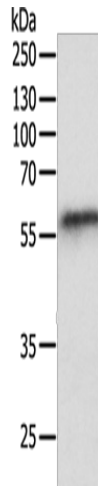
[View online »](#)

**Background:**

This gene encodes an integral membrane protein that is required for cytokine-induced regulation of the tight junction paracellular permeability barrier. Mutations in this gene are thought to be a cause of band-like calcification with simplified gyration and polymicrogyria (BLC-PMG); an autosomal recessive neurologic disorder that is also known as pseudo-TORCH syndrome. Alternative splicing results in multiple transcript variants. A related pseudogene is present 1.5 Mb downstream on the q arm of chromosome 5.

**Synonyms:**

BLCPMG; PPP1R115

**Product images:**

Gel: 10%SDS-PAGE

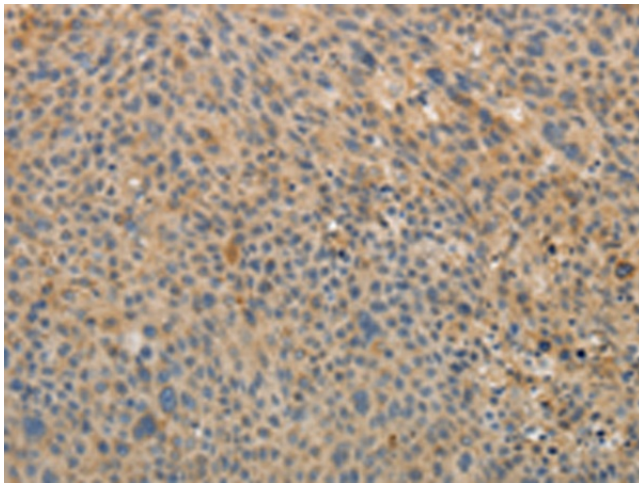
Lysate: 40 µg

Lane: Human liver cancer tissue

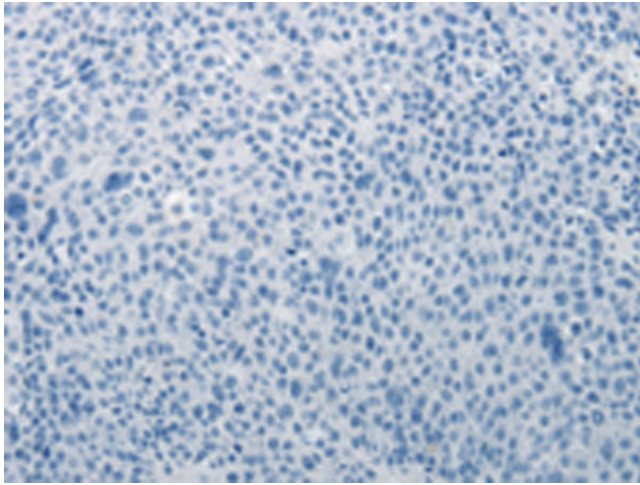
Primary antibody: TA324148 (OCLN Antibody) at dilution 1/200

Secondary antibody: Goat anti rabbit IgG at 1/8000 dilution

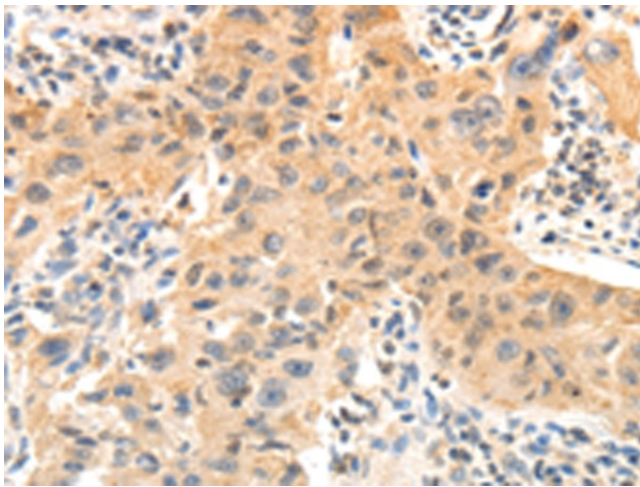
Exposure time: 10 minutes



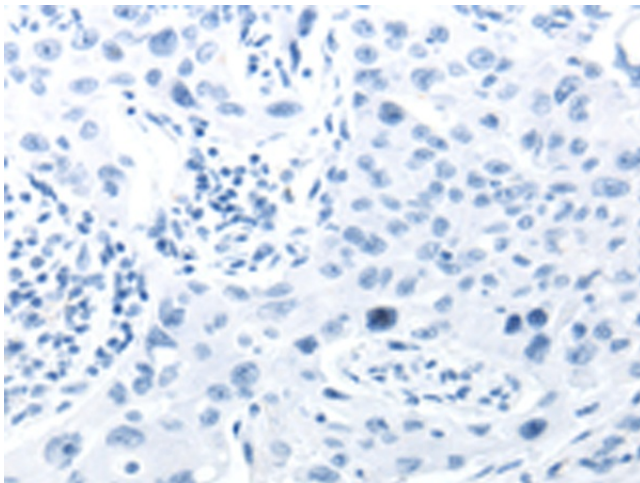
Immunohistochemistry of paraffin-embedded Human liver cancer tissue using TA324148 (OCLN Antibody) at dilution 1/10 (Original magnification: ×200)



Immunohistochemistry of paraffin-embedded Human liver cancer tissue using TA324148 (OCLN Antibody) at dilution 1/10, treated with fusion protein. (Original magnification:  $\times 200$ )



Immunohistochemistry of paraffin-embedded Human lung cancer tissue using TA324148 (OCLN Antibody) at dilution 1/10 (Original magnification:  $\times 200$ )



Immunohistochemistry of paraffin-embedded Human lung cancer tissue using TA324148 (OCLN Antibody) at dilution 1/10, treated with fusion protein. (Original magnification:  $\times 200$ )