

## Product datasheet for **TA324145S**

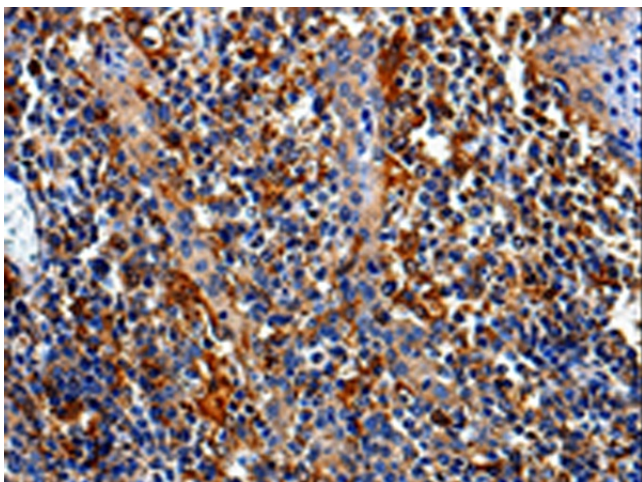
### COX16 Rabbit Polyclonal Antibody

#### Product data:

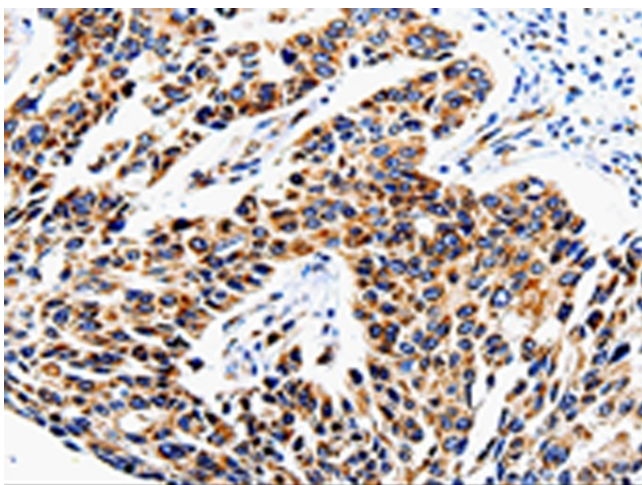
Product Type:	Primary Antibodies
Applications:	IHC
Recommended Dilution:	IHC: 25-100 Positive control: Human tonsil Predicted cell location: Cytoplasm, Cell membrane
Reactivity:	Human, Mouse
Host:	Rabbit
Isotype:	IgG
Clonality:	Polyclonal
Immunogen:	Full length fusion protein
Formulation:	PBS pH7.3, 0.05% NaN <sub>3</sub> , 50% glycerol
Purification:	Antigen affinity purification
Conjugation:	Unconjugated
Storage:	Store at -20°C as received.
Stability:	Stable for 12 months from date of receipt.
Gene Name:	COX16 cytochrome c oxidase assembly homolog
Database Link:	<a href="#">NP_057552</a> <a href="#">Entrez Gene 66272 Mouse</a> <a href="#">Entrez Gene 51241 Human</a> <a href="#">Q9P0S2</a>
Background:	This protein is encoded by COX16; corresponding to the previously uncharacterized open reading frame YJL003w of the yeast genome. COX16 was identified in studies of COX-deficient mutants previously assigned to complementation group G22 of a collection of yeast pet mutants. To determine its location; Cox16p was tagged with a Myc epitope at the C terminus.
Synonyms:	C14orf112; HSPC203
Protein Families:	Secreted Protein, Transmembrane



[View online »](#)

**Product images:**

Immunohistochemistry of paraffin-embedded Human tonsil tissue using [TA324145] (COX16 Antibody) at dilution 1/50. (Original magnification:  $\times 200$ )



Immunohistochemistry of paraffin-embedded Human lung cancer tissue using [TA324145] (COX16 Antibody) at dilution 1/50. (Original magnification:  $\times 200$ )