

## Product datasheet for **TA324141**

### Cytochrome P450 3A4 (CYP3A4) Rabbit Polyclonal Antibody

#### Product data:

Product Type:	Primary Antibodies
Applications:	IHC, WB
Recommended Dilution:	WB: 200-1000 WB positive control: Human fetal liver tissue IHC: 50-200 Positive control: Human thyroid cancer Predicted cell location: Cytoplasm
Reactivity:	Human
Host:	Rabbit
Isotype:	IgG
Clonality:	Polyclonal
Immunogen:	Fusion protein corresponding to C terminal 286 amino acids of human cytochrome P450, family 3, subfamily A, polypeptide 4
Formulation:	PBS pH7.3, 0.05% NaN <sub>3</sub> , 50% glycerol
Concentration:	lot specific
Purification:	Antigen affinity purification
Conjugation:	Unconjugated
Storage:	Store at -20°C as received.
Stability:	Stable for 12 months from date of receipt.
Predicted Protein Size:	57 kDa
Gene Name:	cytochrome P450 family 3 subfamily A member 4
Database Link:	<a href="#">NP_001189784</a> <a href="#">Entrez Gene 1576 Human P08684</a>



[View online »](#)

**Background:**

This gene encodes a member of the cytochrome P450 superfamily of enzymes. The cytochrome P450 proteins are monooxygenases that catalyze many reactions involved in drug metabolism and synthesis of cholesterol; steroids and other lipids. This protein localizes to the endoplasmic reticulum and its expression is induced by glucocorticoids and some pharmacological agents. This enzyme is involved in the metabolism of approximately half the drugs in use today; including acetaminophen; codeine; cyclosporin A; diazepam and erythromycin. The enzyme also metabolizes some steroids and carcinogens. This gene is part of a cluster of cytochrome P450 genes on chromosome 7q21.1. Previously another CYP3A gene; CYP3A3; was thought to exist; however; it is now thought that this sequence represents a transcript variant of CYP3A4. Alternatively spliced transcript variants encoding different isoforms have been identified.?

**Synonyms:**

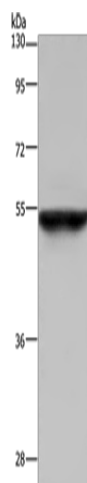
CP33; CP34; CYP3A; CYP3A3; CYP3A3; CYP3A3; CYP3A3; HLP; NF-25; P450C3; P450PCN1

**Protein Families:**

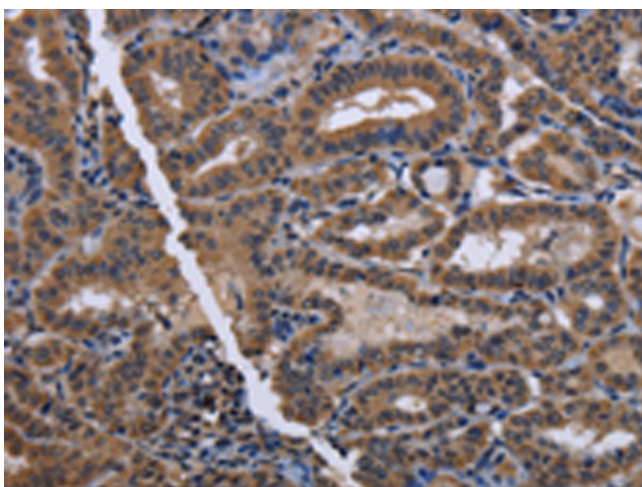
Druggable Genome, ES Cell Differentiation/IPS, P450, Transmembrane

**Protein Pathways:**

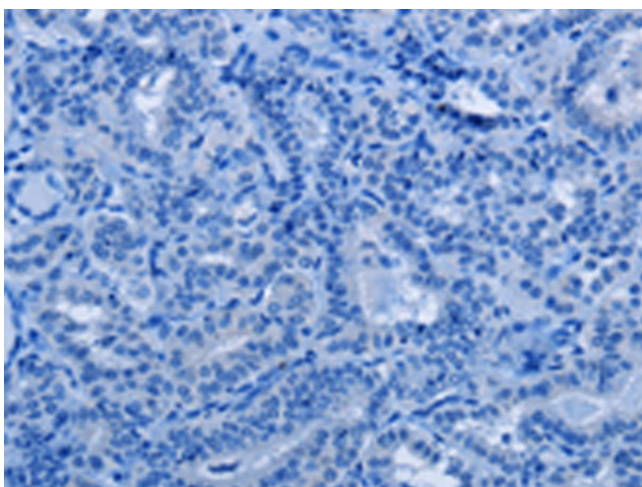
Drug metabolism - cytochrome P450, Drug metabolism - other enzymes, Linoleic acid metabolism, Metabolic pathways, Metabolism of xenobiotics by cytochrome P450, Retinol metabolism

**Product images:**

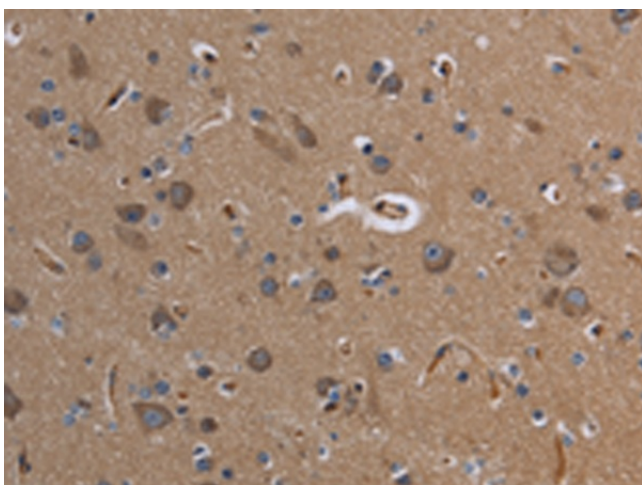
Gel: 8%SDS-PAGE  
Lysate: 40 µg  
Lane: Human fetal liver tissue  
Primary antibody: TA324141 (CYP3A4 Antibody)  
at dilution 1/250  
Secondary antibody: Goat anti rabbit IgG at  
1/8000 dilution  
Exposure time: 5 seconds



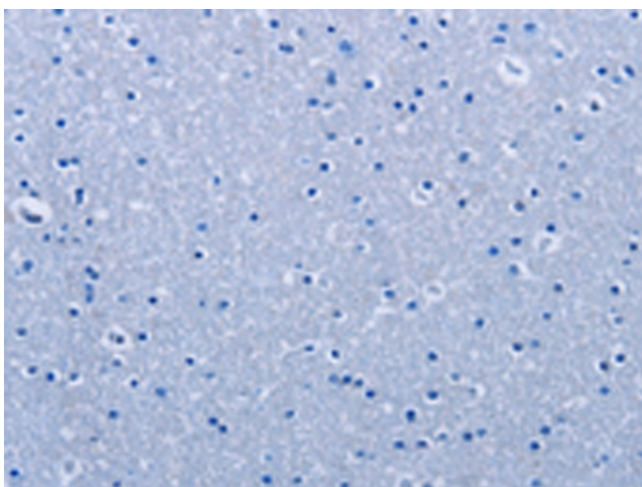
Immunohistochemistry of paraffin-embedded Human thyroid cancer tissue using TA324141 (CYP3A4 Antibody) at dilution 1/40 (Original magnification:  $\times 200$ )



Immunohistochemistry of paraffin-embedded Human thyroid cancer tissue using TA324141 (CYP3A4 Antibody) at dilution 1/40, treated with fusion protein. (Original magnification:  $\times 200$ )



Immunohistochemistry of paraffin-embedded Human brain tissue using TA324141 (CYP3A4 Antibody) at dilution 1/40 (Original magnification:  $\times 200$ )



Immunohistochemistry of paraffin-embedded Human brain tissue using TA324141 (CYP3A4 Antibody) at dilution 1/40, treated with fusion protein. (Original magnification:  $\times 200$ )