

## Product datasheet for **TA324140**

### Peroxiredoxin 1 (PRDX1) Rabbit Polyclonal Antibody

#### Product data:

Product Type:	Primary Antibodies
Applications:	IHC, WB
Recommended Dilution:	WB: 200-1000 WB positive control: Mouse liver and kidney tissue, NIH/3T3 and RAW264.7 cells, human fetal brain tissue, 293T, K562, Jurkat and hela cells IHC: 25-100 Positive control: Human ovarian cancer Predicted cell location: Cytoplasm
Reactivity:	Human, Mouse, Rat
Host:	Rabbit
Isotype:	IgG
Clonality:	Polyclonal
Immunogen:	Synthetic peptide peptide corresponding to a region derived from 103-115 amino acids of human peroxiredoxin 1
Formulation:	PBS pH7.3, 0.05% NaN <sub>3</sub> , 50% glycerol
Concentration:	lot specific
Purification:	Antigen affinity purification
Conjugation:	Unconjugated
Storage:	Store at -20°C as received.
Stability:	Stable for 12 months from date of receipt.
Predicted Protein Size:	22 kDa
Gene Name:	peroxiredoxin 1
Database Link:	<a href="#">NP_001189360</a> <a href="#">Entrez Gene 18477 Mouse</a> <a href="#">Entrez Gene 117254 Rat</a> <a href="#">Entrez Gene 5052 Human</a> <a href="#">Q06830</a>



[View online »](#)

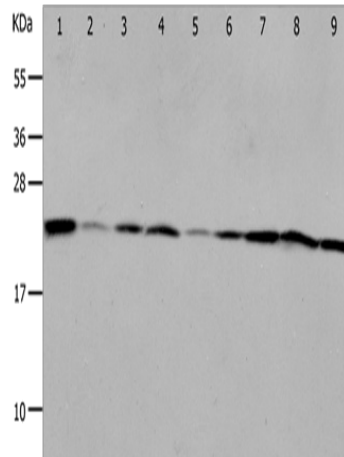
**Background:**

This gene encodes a member of the peroxiredoxin family of antioxidant enzymes; which reduce hydrogen peroxide and alkyl hydroperoxides. The encoded protein may play an antioxidant protective role in cells; and may contribute to the antiviral activity of CD8(+) T-cells. This protein may have a proliferative effect and play a role in cancer development or progression. Four transcript variants encoding the same protein have been identified for this gene.?

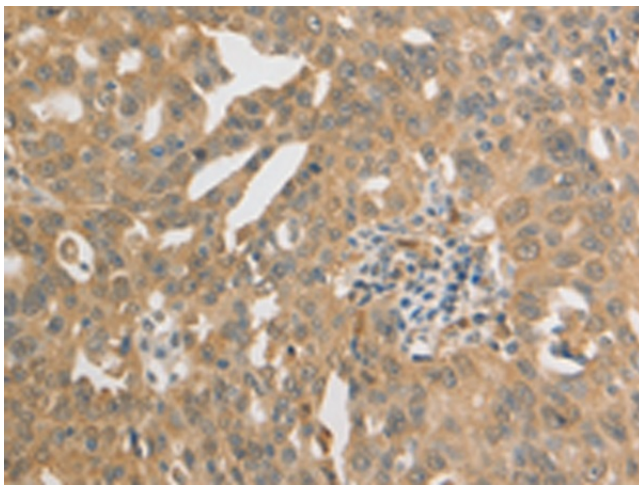
**Synonyms:**

MSP23; NKEF-A; NKEFA; PAG; PAGA; PAGB; PRX1; PRXI; TDPX2

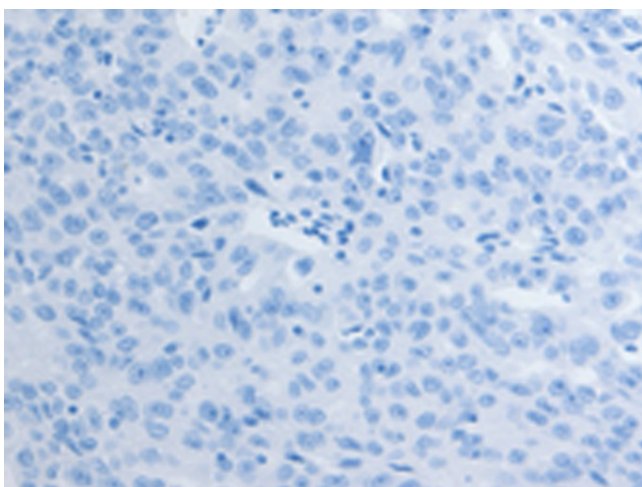
**Product images:**



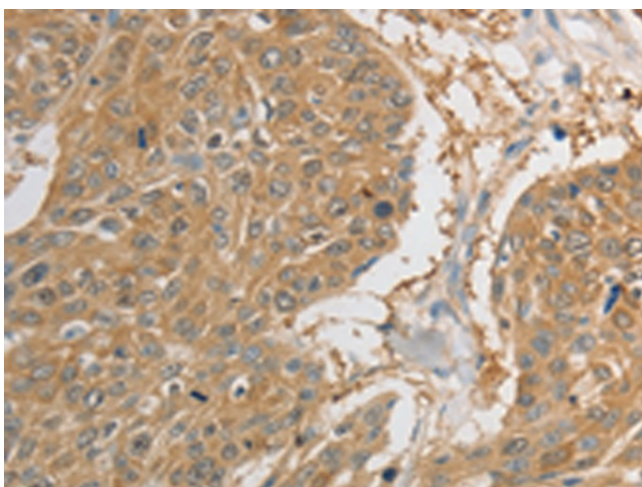
Gel: 12%SDS-PAGE  
 Lysate: 40 µg  
 Lane 1-9: Mouse liver tissue  
 Mouse kidney tissue  
 NIH/3T3 cells  
 RAW264.7 cells  
 human fetal brain tissue  
 293T cells  
 K562 cells  
 Jurkat cells  
 HeLa cells  
 Primary antibody: TA324140 (PRDX1 Antibody) at dilution 1/400  
 Secondary antibody: Goat anti rabbit IgG at 1/8000 dilution  
 Exposure time: 50 seconds



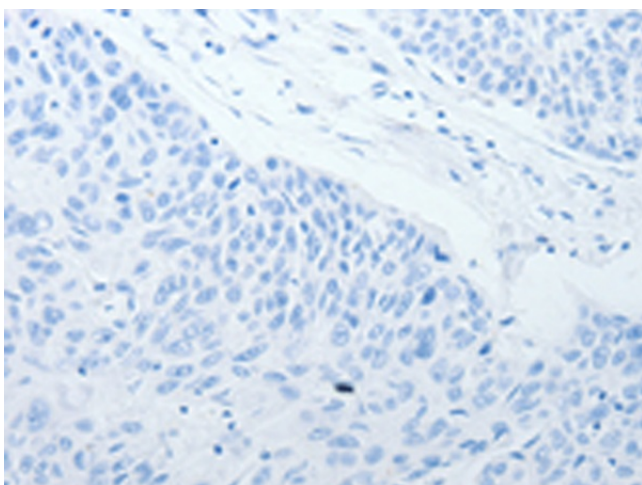
Immunohistochemistry of paraffin-embedded Human ovarian cancer tissue using TA324140 (PRDX1 Antibody) at dilution 1/20 (Original magnification: ×200)



Immunohistochemistry of paraffin-embedded Human ovarian cancer tissue using TA324140 (PRDX1 Antibody) at dilution 1/20, treated with synthetic peptide. (Original magnification: x200)



Immunohistochemistry of paraffin-embedded Human esophagus cancer tissue using TA324140 (PRDX1 Antibody) at dilution 1/20 (Original magnification: x200)



Immunohistochemistry of paraffin-embedded Human esophagus cancer tissue using TA324140 (PRDX1 Antibody) at dilution 1/20, treated with synthetic peptide. (Original magnification: x200)