

Product datasheet for **TA324139S**

Peroxiredoxin 1 (PRDX1) Rabbit Polyclonal Antibody

Product data:

Product Type:	Primary Antibodies
Applications:	IHC, WB
Recommended Dilution:	WB: 200-1000 WB positive control: Mouse liver tissue, NIH/3T3, RAW264.7, 293T, K562, Jurkat and hela cells IHC: 25-100 Positive control: Human liver cancer Predicted cell location: Cytoplasm
Reactivity:	Human, Mouse, Rat
Host:	Rabbit
Isotype:	IgG
Clonality:	Polyclonal
Immunogen:	Synthetic peptide peptide corresponding to a region derived from 103-115 amino acids of human peroxiredoxin 1
Formulation:	PBS pH7.3, 0.05% NaN ₃ , 50% glycerol
Purification:	Antigen affinity purification
Conjugation:	Unconjugated
Storage:	Store at -20°C as received.
Stability:	Stable for 12 months from date of receipt.
Predicted Protein Size:	22 kDa
Gene Name:	peroxiredoxin 1
Database Link:	NP_001189360 Entrez Gene 18477 MouseEntrez Gene 117254 RatEntrez Gene 5052 Human Q06830



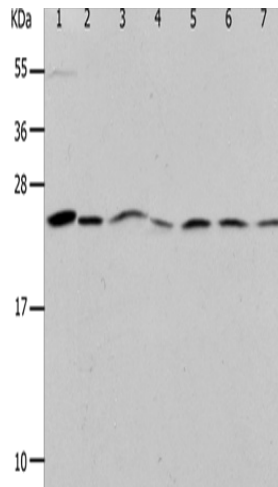
[View online »](#)

Background:

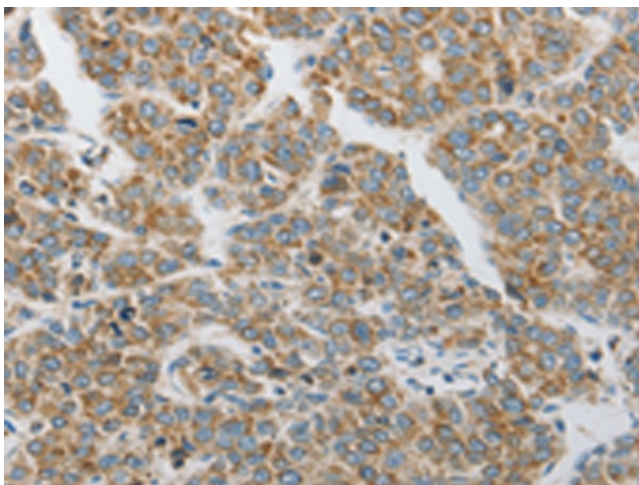
This gene encodes a member of the peroxiredoxin family of antioxidant enzymes; which reduce hydrogen peroxide and alkyl hydroperoxides. The encoded protein may play an antioxidant protective role in cells; and may contribute to the antiviral activity of CD8(+) T-cells. This protein may have a proliferative effect and play a role in cancer development or progression. Four transcript variants encoding the same protein have been identified for this gene.?

Synonyms:

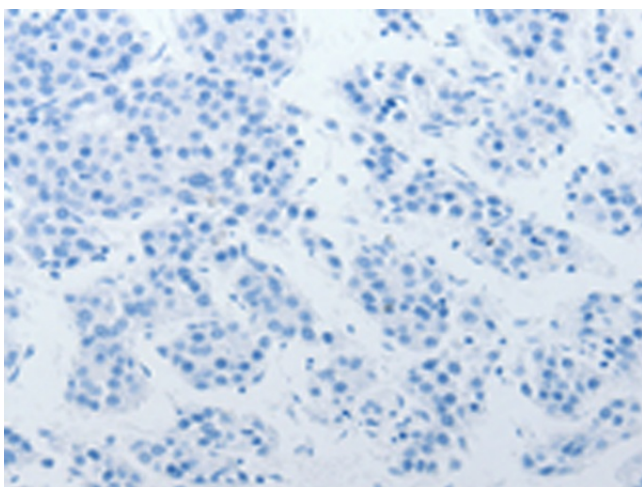
MSP23; NKEF-A; NKEFA; PAG; PAGA; PAGB; PRX1; PRXI; TDPX2

Product images:


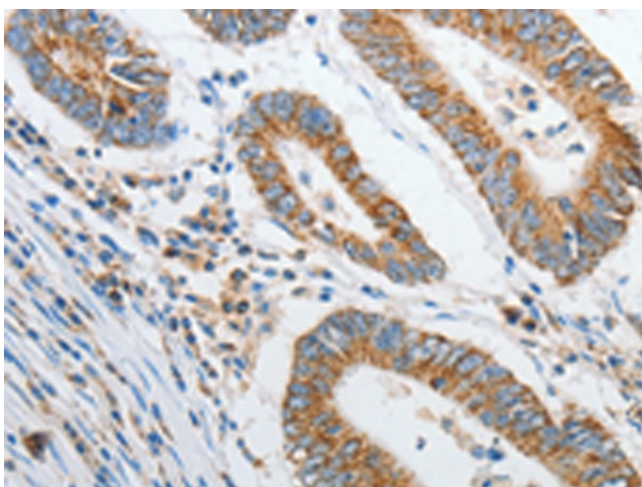
Gel: 12%SDS-PAGE
 Lysate: 40 µg
 Lane 1-7: Mouse liver tissue
 NIH/3T3 cells
 RAW264.7 cells
 293T cells
 K562 cells
 Jurkat cells
 hela cells
 Primary antibody: [TA324139] (PRDX1 Antibody) at dilution 1/400
 Secondary antibody: Goat anti rabbit IgG at 1/8000 dilution
 Exposure time: 50 seconds



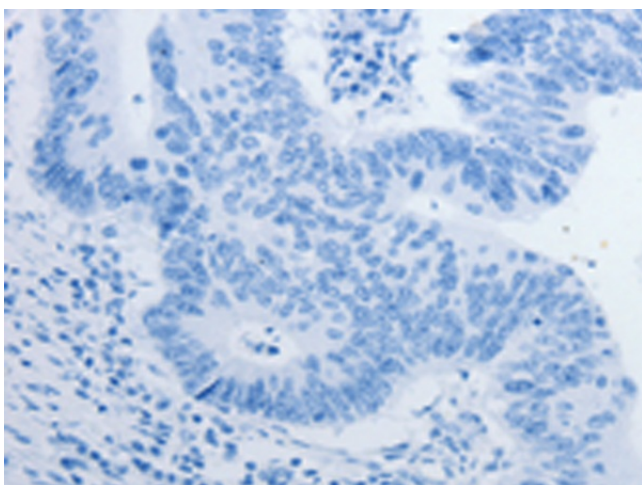
Immunohistochemistry of paraffin-embedded Human liver cancer tissue using [TA324139] (PRDX1 Antibody) at dilution 1/20 (Original magnification: ×200)



Immunohistochemistry of paraffin-embedded Human liver cancer tissue using [TA324139] (PRDX1 Antibody) at dilution 1/20, treated with synthetic peptide. (Original magnification: $\times 200$)



Immunohistochemistry of paraffin-embedded Human colon cancer tissue using [TA324139] (PRDX1 Antibody) at dilution 1/20 (Original magnification: $\times 200$)



Immunohistochemistry of paraffin-embedded Human colon cancer tissue using [TA324139] (PRDX1 Antibody) at dilution 1/20, treated with synthetic peptide. (Original magnification: $\times 200$)