

## Product datasheet for **TA324133**

### gamma Actin (ACTG1) Rabbit Polyclonal Antibody

#### Product data:

Product Type:	Primary Antibodies
Applications:	WB
Recommended Dilution:	WB: 200-1000 WB positive control: Human liver cancer tissue
Reactivity:	Human, Mouse, Rat
Host:	Rabbit
Isotype:	IgG
Clonality:	Polyclonal
Immunogen:	Fusion protein corresponding to a region derived from 4-379 amino acids of human actin, gamma 1
Formulation:	PBS pH7.3, 0.05% NaN <sub>3</sub> , 50% glycerol
Concentration:	lot specific
Purification:	Antigen affinity purification
Conjugation:	Unconjugated
Storage:	Store at -20°C as received.
Stability:	Stable for 12 months from date of receipt.
Predicted Protein Size:	42 kDa
Gene Name:	actin gamma 1
Database Link:	<a href="#">NP_001186883</a> <a href="#">Entrez Gene 11465 Mouse</a> <a href="#">Entrez Gene 287876 Rat</a> <a href="#">Entrez Gene 71 Human</a> <a href="#">P63261</a>



[View online »](#)

**Background:**

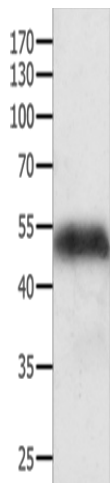
Actins are highly conserved proteins that are involved in various types of cell motility; and maintenance of the cytoskeleton. In vertebrates; three main groups of actin isoforms; alpha; beta and gamma have been identified. The alpha actins are found in muscle tissues and are a major constituent of the contractile apparatus. The beta and gamma actins co-exist in most cell types as components of the cytoskeleton; and as mediators of internal cell motility. Actin; gamma 1; encoded by this gene; is a cytoplasmic actin found in non-muscle cells. Mutations in this gene are associated with DFNA20/26; a subtype of autosomal dominant non-syndromic sensorineural progressive hearing loss. Alternative splicing results in multiple transcript variants.

**Synonyms:**

ACT; ACTG; BRWS2; DFNA20; DFNA26; HEL-176

**Protein Pathways:**

Adherens junction, Arrhythmogenic right ventricular cardiomyopathy (ARVC), Dilated cardiomyopathy, Focal adhesion, Hypertrophic cardiomyopathy (HCM), Leukocyte transendothelial migration, Pathogenic Escherichia coli infection, Regulation of actin cytoskeleton, Tight junction, Vibrio cholerae infection, Viral myocarditis

**Product images:**

Gel: 10+12%SDS-PAGE  
Lysate: 40 µg  
Lane: Human liver cancer tissue  
Primary antibody: TA324133 (ACTG1 Antibody) at dilution 1/200  
Secondary antibody: Goat anti rabbit IgG at 1/8000 dilution  
Exposure time: 5 seconds