

Product datasheet for **TA324128**

CRABP2 Rabbit Polyclonal Antibody

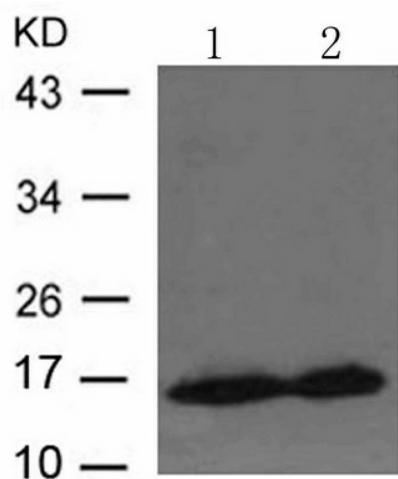
Product data:

Product Type:	Primary Antibodies
Applications:	WB
Recommended Dilution:	WB: 1:500-1000
Reactivity:	Human, Rat
Host:	Rabbit
Isotype:	IgG
Clonality:	Polyclonal
Immunogen:	Peptide sequence around aa.87~91(K-W-E-S-E) derived from Human CRABP2
Formulation:	PBS pH7.3, 0.05% NaN ₃ , 50% glycerol
Concentration:	lot specific
Purification:	Antigen affinity purification
Conjugation:	Unconjugated
Storage:	Store at -20°C as received.
Stability:	Stable for 12 months from date of receipt.
Predicted Protein Size:	16 kDa
Gene Name:	cellular retinoic acid binding protein 2
Database Link:	NP_001186652 Entrez Gene 29563 Rat Entrez Gene 1382 Human P29373
Background:	This gene encodes a member of the retinoic acid (RA, a form of vitamin A) binding protein family and lipocalin/cytosolic fatty-acid binding protein family. The protein is a cytosol-to-nuclear shuttling protein, which facilitates RA binding to its cognate receptor complex and transfer to the nucleus. It is involved in the retinoid signaling pathway, and is associated with increased circulating low-density lipoprotein cholesterol. Alternatively spliced transcript variants encoding the same protein have been found for this gene.
Synonyms:	CRABP-II; RBP6
Protein Families:	Druggable Genome, Transcription Factors



[View online »](#)

Product images:



Predicted band size: 16 kDa. Positive control: MCF-7 and HT-29 cells lysate. Recommended dilution: 1/ 500-1000. (Gel: 12%SDS-PAGE Lane 1, 2: MCF-7 and HT-29 cells lysate Lysates: 30 ug per lane Primary antibody: 1/500 dilution Secondary antibody: Goat anti Rabbit IgG - H&L (HRP) at 1/10000 dilution Exposure time: 1 minute)