

## Product datasheet for **TA324124S**

### ADCY5 Rabbit Polyclonal Antibody

#### Product data:

Product Type:	Primary Antibodies
Applications:	IHC
Recommended Dilution:	IHC: 25-100 Positive control: Human colon cancer Predicted cell location: Cytoplasm
Reactivity:	Human, Mouse, Rat
Host:	Rabbit
Isotype:	IgG
Clonality:	Polyclonal
Immunogen:	Synthetic peptide corresponding to a region derived from 1110-1124 amino acids of human adenylate cyclase 5
Formulation:	PBS pH7.3, 0.05% NaN <sub>3</sub> , 50% glycerol
Purification:	Antigen affinity purification
Conjugation:	Unconjugated
Storage:	Store at -20°C as received.
Stability:	Stable for 12 months from date of receipt.
Gene Name:	adenylate cyclase 5
Database Link:	<a href="#">NP_899200</a> <a href="#">Entrez Gene 64532 Rat</a> <a href="#">Entrez Gene 224129 Mouse</a> <a href="#">Entrez Gene 111 Human</a> <a href="#">O95622</a>
Background:	This gene encodes a member of the membrane-bound adenylyl cyclase enzymes. Adenylyl cyclases mediate G protein-coupled receptor signaling through the synthesis of the second messenger cAMP. Activity of the encoded protein is stimulated by the Gs alpha subunit of G protein-coupled receptors and is inhibited by protein kinase A; calcium and Gi alpha subunits. Single nucleotide polymorphisms in this gene may be associated with low birth weight and type 2 diabetes. Alternatively spliced transcript variants that encode different isoforms have been observed for this gene.
Synonyms:	AC5; FDFM

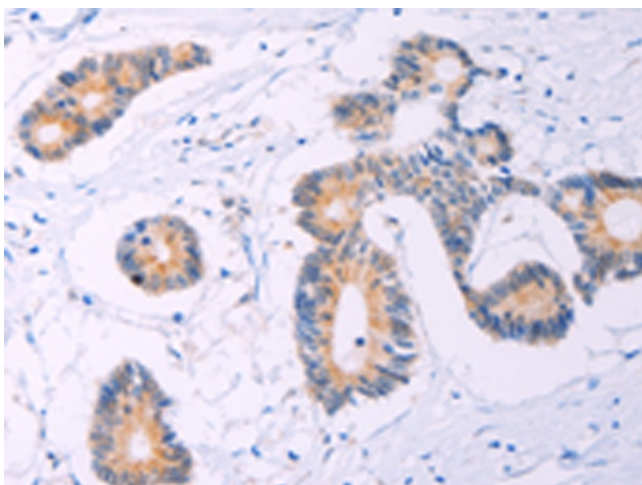


[View online »](#)

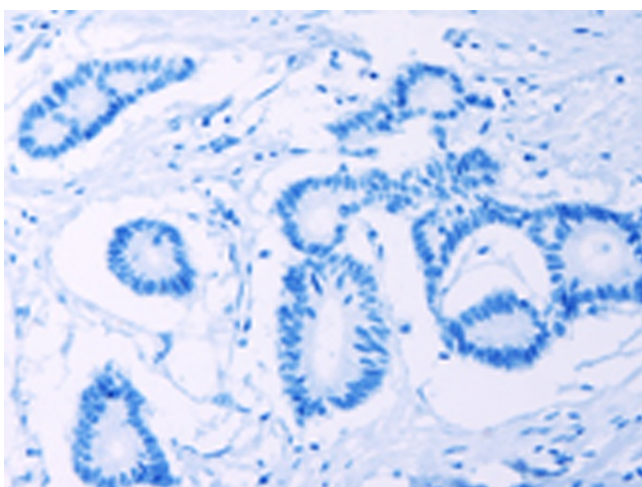
**Protein Families:** Druggable Genome, Transmembrane

**Protein Pathways:** Chemokine signaling pathway, Dilated cardiomyopathy, Gap junction, GnRH signaling pathway, Melanogenesis, Oocyte meiosis, Progesterone-mediated oocyte maturation, Purine metabolism, Vascular smooth muscle contraction

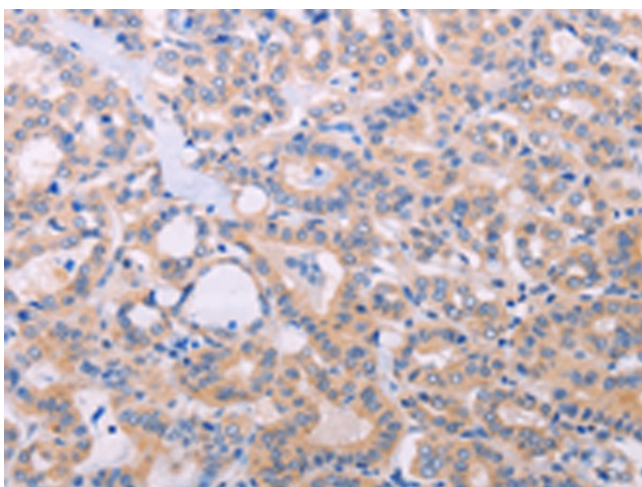
**Product images:**



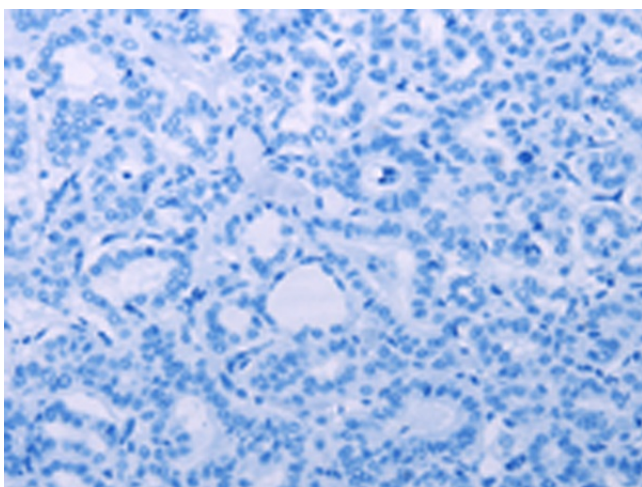
Immunohistochemistry of paraffin-embedded Human colon cancer tissue using [TA324124] (ADCY5 Antibody) at dilution 1/30 (Original magnification:  $\times 200$ )



Immunohistochemistry of paraffin-embedded Human colon cancer tissue using [TA324124] (ADCY5 Antibody) at dilution 1/30, treated with synthetic peptide. (Original magnification:  $\times 200$ )



Immunohistochemistry of paraffin-embedded Human thyroid cancer tissue using [TA324124] (ADCY5 Antibody) at dilution 1/30 (Original magnification: x200)



Immunohistochemistry of paraffin-embedded Human thyroid cancer tissue using [TA324124] (ADCY5 Antibody) at dilution 1/30, treated with synthetic peptide. (Original magnification: x200)