

## Product datasheet for **TA324123**

### PACAP receptor (ADCYAP1R1) Rabbit Polyclonal Antibody

#### Product data:

Product Type:	Primary Antibodies
Applications:	IHC, WB
Recommended Dilution:	WB: 1000-5000 WB positive control: Hela cells, Mouse stomach and brain tissue IHC: 50-200 Positive control: Human tonsil Predicted cell location: Cytoplasm, Cell membrane
Reactivity:	Human, Mouse
Host:	Rabbit
Isotype:	IgG
Clonality:	Polyclonal
Immunogen:	Synthetic peptide corresponding to a region derived from 34-47 amino acids of Human adenylate cyclase activating polypeptide 1 (pituitary) receptor type I
Formulation:	PBS pH7.3, 0.05% NaN <sub>3</sub> , 50% glycerol
Concentration:	lot specific
Purification:	Antigen affinity purification
Conjugation:	Unconjugated
Storage:	Store at -20°C as received.
Stability:	Stable for 12 months from date of receipt.
Predicted Protein Size:	57 kDa
Gene Name:	ADCYAP receptor type I
Database Link:	<a href="#">NP_001109</a> <a href="#">Entrez Gene 11517 Mouse</a> <a href="#">Entrez Gene 117 Human</a> <a href="#">P41586</a>



[View online »](#)

**Background:**

This gene encodes type I adenylate cyclase activating polypeptide receptor; which is a membrane-associated protein and shares significant homology with members of the glucagon/secretin receptor family. This receptor mediates diverse biological actions of adenylate cyclase activating polypeptide 1 and is positively coupled to adenylate cyclase. Multiple alternatively spliced transcript variants encoding distinct isoforms have been identified.

**Synonyms:**

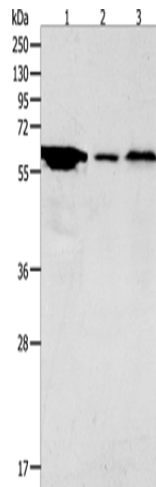
PAC1; PAC1R; PACAPR; PACAPRI

**Protein Families:**

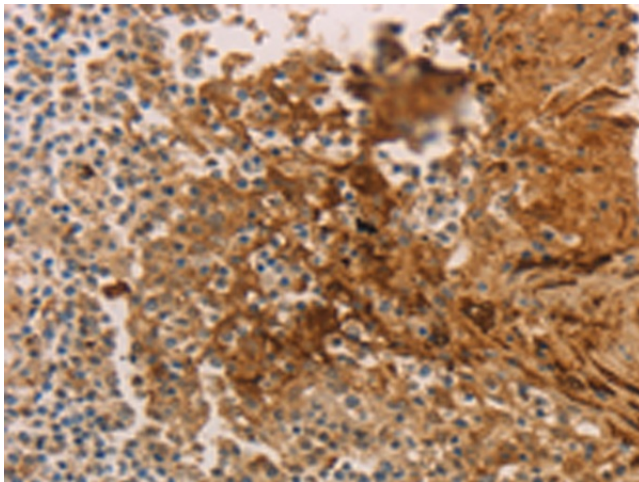
Druggable Genome, GPCR, Transmembrane

**Protein Pathways:**

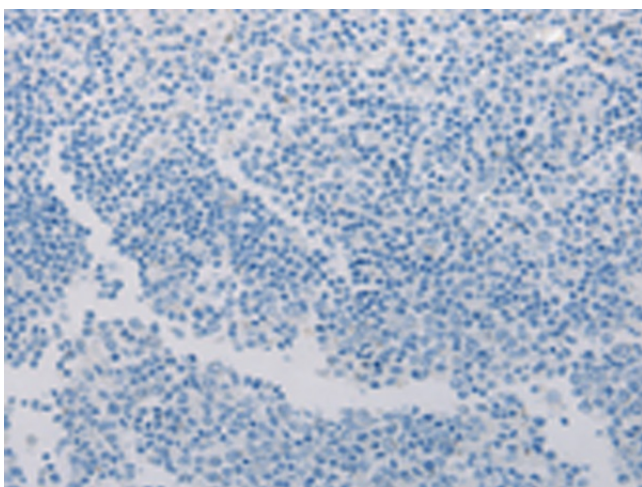
Neuroactive ligand-receptor interaction

**Product images:**

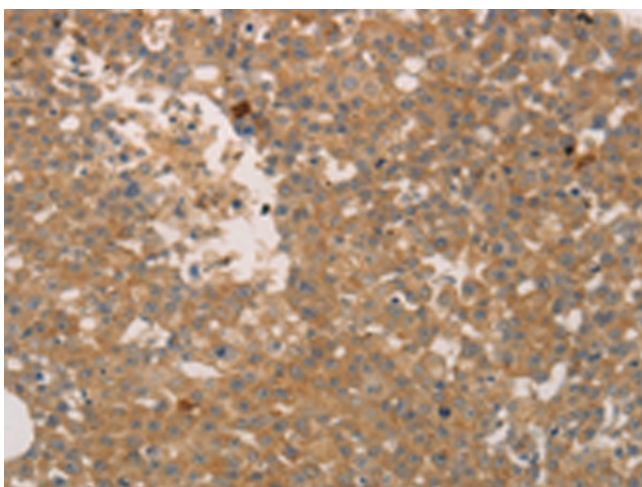
Gel: 10%SDS-PAGE  
Lysate: 40 µg  
Lane 1-3: HeLa cells  
Mouse stomach tissue  
Mouse brain tissue  
Primary antibody: TA324123 (ADCYAP1R1 Antibody) at dilution 1/2000  
Secondary antibody: Goat anti rabbit IgG at 1/8000 dilution  
Exposure time: 5 minutes



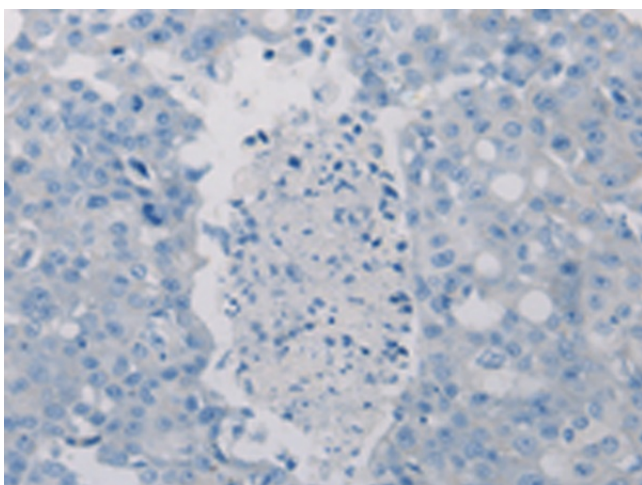
Immunohistochemistry of paraffin-embedded Human tonsil tissue using TA324123 (ADCYAP1R1 Antibody) at dilution 1/70 (Original magnification: ×200)



Immunohistochemistry of paraffin-embedded Human tonsil tissue using TA324123 (ADCYAP1R1 Antibody) at dilution 1/70, treated with synthetic peptide. (Original magnification:  $\times 200$ )



Immunohistochemistry of paraffin-embedded Human breast cancer tissue using TA324123 (ADCYAP1R1 Antibody) at dilution 1/70 (Original magnification:  $\times 200$ )



Immunohistochemistry of paraffin-embedded Human breast cancer tissue using TA324123 (ADCYAP1R1 Antibody) at dilution 1/70, treated with synthetic peptide. (Original magnification:  $\times 200$ )