

## Product datasheet for **TA324116**

### Calpain 1 (CAPN1) Rabbit Polyclonal Antibody

#### Product data:

Product Type:	Primary Antibodies
Applications:	IHC, WB
Recommended Dilution:	WB: 1000-5000 WB positive control: K562, Jurkat and Hela cell lysates IHC: 50-200 Positive control: Human tonsil Predicted cell location: Cytoplasm
Reactivity:	Human, Mouse, Rat
Host:	Rabbit
Isotype:	IgG
Clonality:	Polyclonal
Immunogen:	Fusion protein corresponding to a region derived from 543-713 amino acids of Human Calpain-1 catalytic subunit
Formulation:	PBS pH7.3, 0.05% NaN <sub>3</sub> , 50% glycerol
Concentration:	lot specific
Purification:	Antigen affinity purification
Conjugation:	Unconjugated
Storage:	Store at -20°C as received.
Stability:	Stable for 12 months from date of receipt.
Predicted Protein Size:	82 kDa
Gene Name:	calpain 1
Database Link:	<a href="#">NP_001185797</a> <a href="#">Entrez Gene 12333 Mouse</a> <a href="#">Entrez Gene 29153 Rat</a> <a href="#">Entrez Gene 823 Human</a> <a href="#">P07384</a>



[View online »](#)

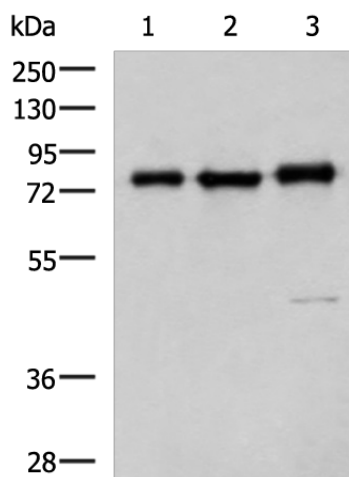
**Background:** The calpains; calcium-activated neutral proteases; are nonlysosomal; intracellular cysteine proteases. The mammalian calpains include ubiquitous; stomach-specific; and muscle-specific proteins. The ubiquitous enzymes consist of heterodimers with distinct large; catalytic subunits associated with a common small; regulatory subunit. This gene encodes the large subunit of the ubiquitous enzyme; calpain 1. Several transcript variants encoding two different isoforms have been found for this gene.

**Synonyms:** CANP; CANP1; CANPL1; muCANP; muCL; SPG76

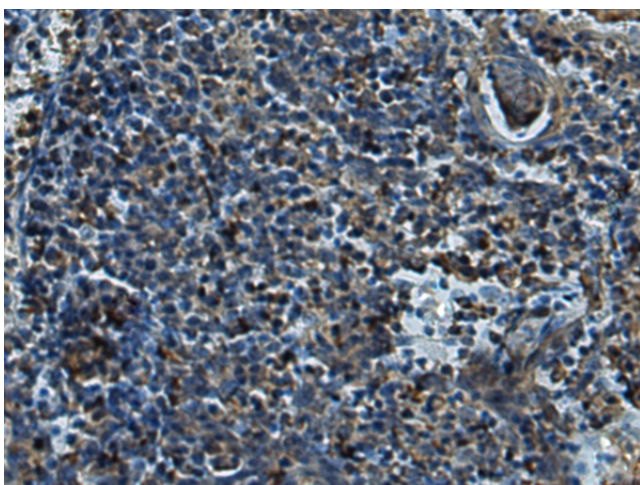
**Protein Families:** Druggable Genome, Protease

**Protein Pathways:** Alzheimer's disease, Apoptosis

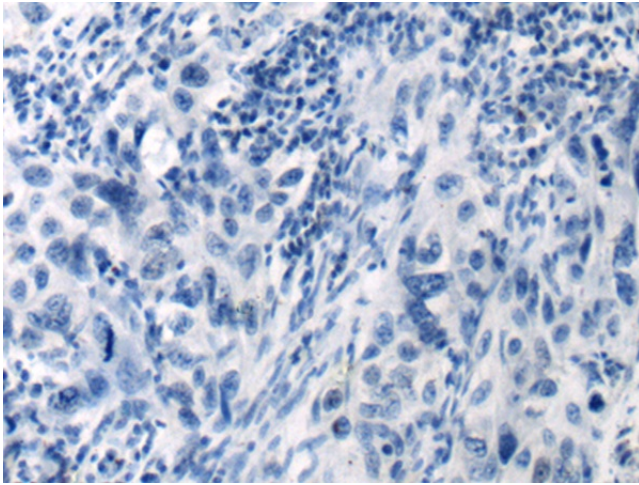
**Product images:**



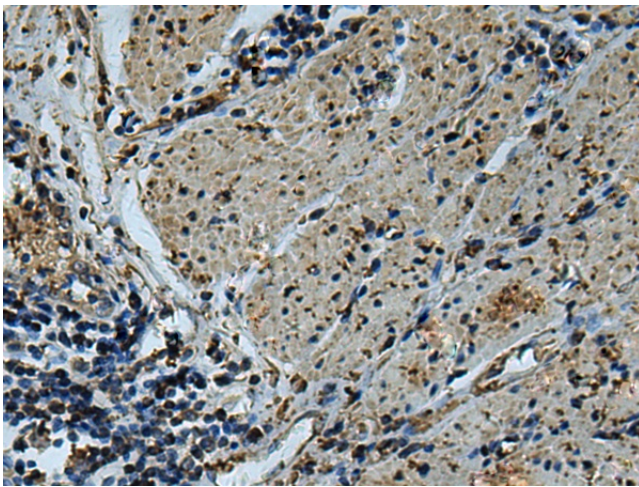
Gel: 6%SDS-PAGE  
 Lysate: 40 µg  
 Lane 1-3: K562  
 Jurkat and Hela cell lysates  
 Primary antibody: TA324116 (CAPN1 Antibody) at dilution 1/1000  
 Secondary antibody: Goat anti rabbit IgG at 1/5000 dilution  
 Exposure time: 30 seconds



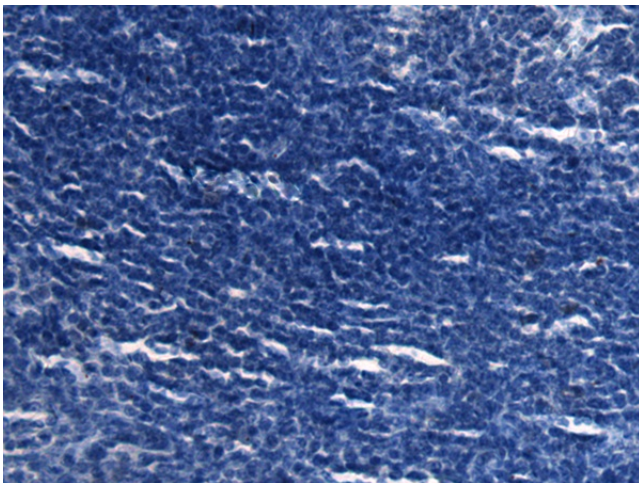
Immunohistochemistry of paraffin-embedded Human tonsil tissue using TA324116 (CAPN1 Antibody) at dilution 1/75 (Original magnification: ×200)



Immunohistochemistry of paraffin-embedded Human tonsil tissue using TA324116 (CAPN1 Antibody) at dilution 1/75, treated with fusion protein. (Original magnification: x200)



Immunohistochemistry of paraffin-embedded Human esophagus cancer tissue using TA324116 (CAPN1 Antibody) at dilution 1/75 (Original magnification: x200)



Immunohistochemistry of paraffin-embedded Human esophagus cancer tissue using TA324116 (CAPN1 Antibody) at dilution 1/75, treated with fusion protein. (Original magnification: x200)